

WAAS CH 45627 W16A	APP CRS 161°	Rwy Idg TDZE Apt Elev	5001 643 647
--	------------------------	-----------------------------	---

RNAV (GPS) RWY 16

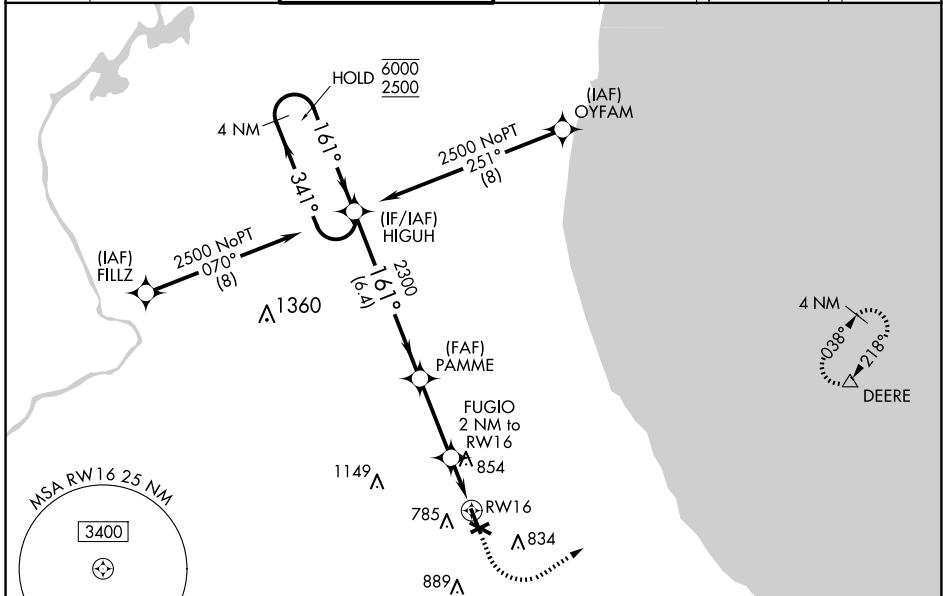
CHICAGO EXEC (PWK)

RNP APCH - GPS.

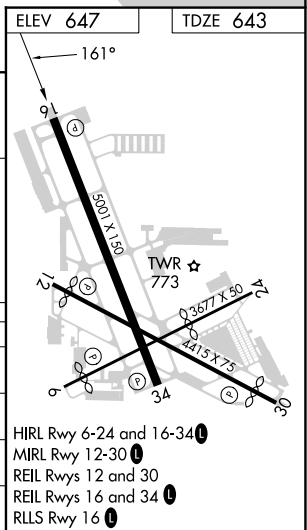
⚠ Circling Rwy 6, 12, 24, 30 NA at night.
⚠ Rwy 16 helicopter visibility reduction below ¾ SM NA.
 For uncompensated Baro-VNAV systems, LNAV/VNAV NA below -19°C or above 54°C.

MISSED APPROACH: Climb to 1200 then climbing left turn to 2100 direct DEERE and hold.

ATIS 124.2	CHICAGO APP CON 120.55 306.925	EXECUTIVE TOWER ★ 119.9 (CTAF) 0	GND CON 121.7	CLNC DEL 124.7	CLNC DEL 124.7 (When twr closed)	UNICOM 122.95
----------------------	--	--	-------------------------	--------------------------	---	-------------------------



4 NM Holding Pattern		HIGUH		PAMME		FUGIO 2 NM to RWY 16		RWY 16	
6000 ← 341°		2500 → 161°		2300 ↘ 161°		1320 ↘ 161°		854 ↘ 161°	
GP 3.00°		TCH 52		2300		1320		854	
		6.4 NM		3 NM		0.7 NM		1.3 NM	
CATEGORY	A	B	C	D					
LPV DA	927-7/8		284 (300-7/8)						
LNAV/VNAV DA	1083-1 1/4		440 (500-1 1/4)						
LNAV MDA	1120-1		477 (500-1)		1120-1 3/8		477 (500-1 3/8)		
C CIRCLING	1140-1 493 (500-1)		1160-1 513 (600-1)		1200-1 1/2 553 (600-1 1/2)		1460-2 3/4 813 (900-2 3/4)		



EC-3, 20 FEB 2025 to 20 MAR 2025

EC-3, 20 FEB 2025 to 20 MAR 2025