

LOC/DME I-EKI 110.3 Chan 40	APP CRS 312°	Rwy ldg 7510 TDZE 43 Apt Elev 46
---	------------------------	---

LOC RWY 31

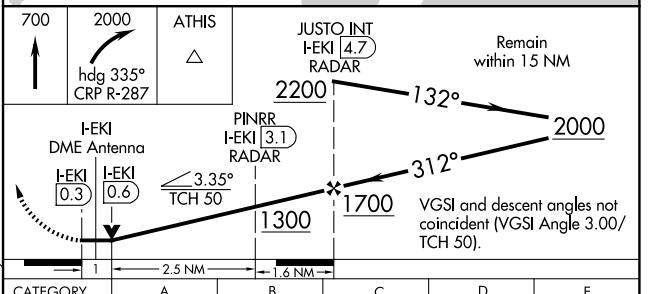
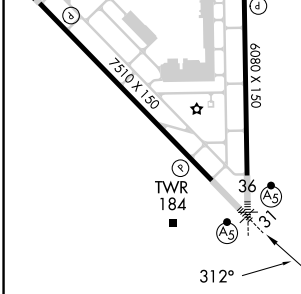
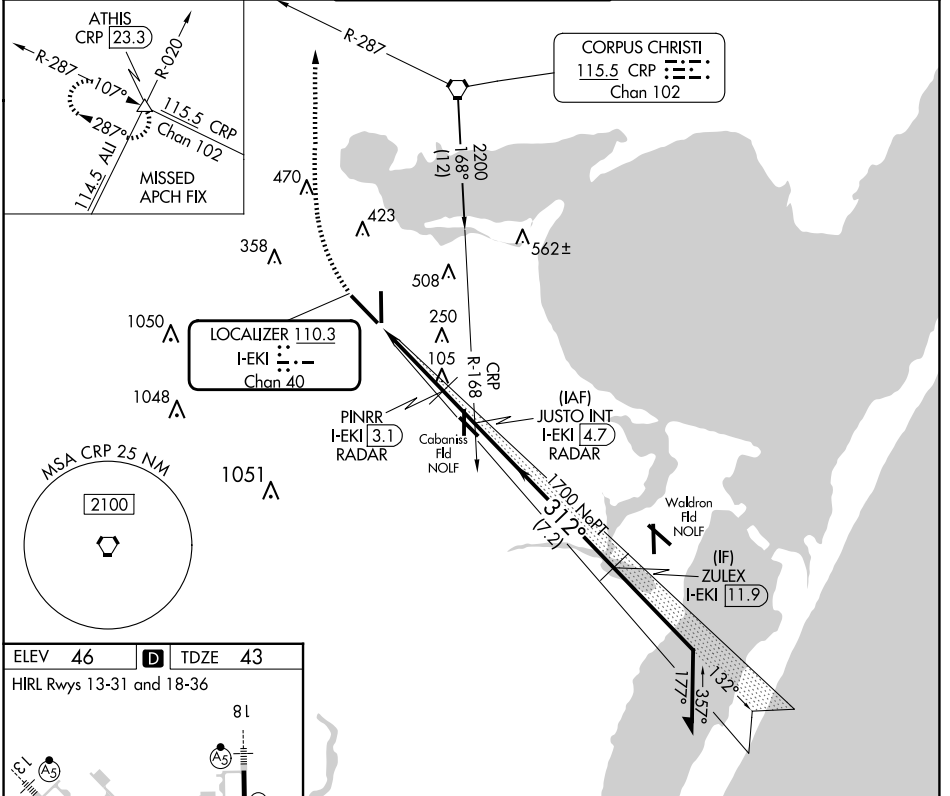
CORPUS CHRISTI INTL (CRP)

DME or RADAR required.
RADAR required for procedure entry at ZULEX.
For inop ALS, increase S-LOC 31 Cats C, D, and E visibility to 1 SM.



MISSED APPROACH: Climb to 700 then climbing right turn to 2000 on heading 335° and CRP VORTAC R-287 to ATHIS INT/CRP VORTAC 23.3 DME and hold.

ATIS 126.8	CORPUS APP CON 120.9 348.725	CORPUS TOWER 119.4 257.8	GND CON 121.9 269.15	CLNC DEL 118.55
----------------------	--	------------------------------------	--------------------------------	---------------------------



FAF to MAP 5.1 NM

Knots	60	90	120	150	180
Min:Sec	5:06	3:24	2:33	2:02	1:42

CATEGORY	A	B	C	D	E
5-31	400-1/2	357 (400-1/2)	400-5/8 357 (400-5/8)		
CIRCLING	500-1	780-1	820-2 1/4	820-2 1/2	820-2 3/4
	454 (500-1)	734 (800-1)	774 (800-2 1/4)	774 (800-2 1/2)	774 (800-2 3/4)

SC-3, 20 FEB 2025 to 20 MAR 2025

SC-3, 20 FEB 2025 to 20 MAR 2025