

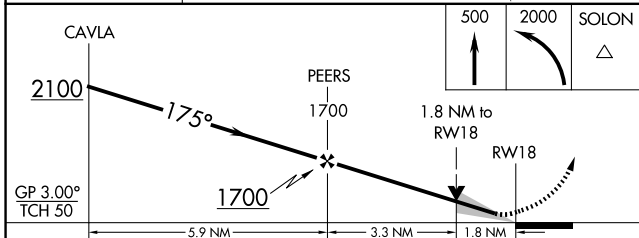
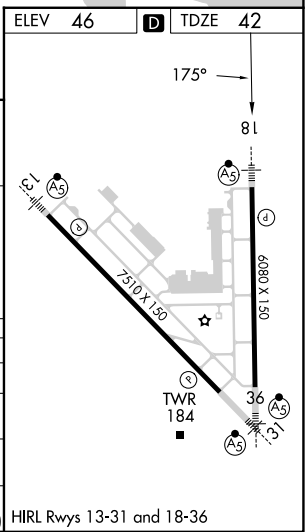
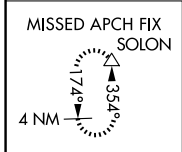
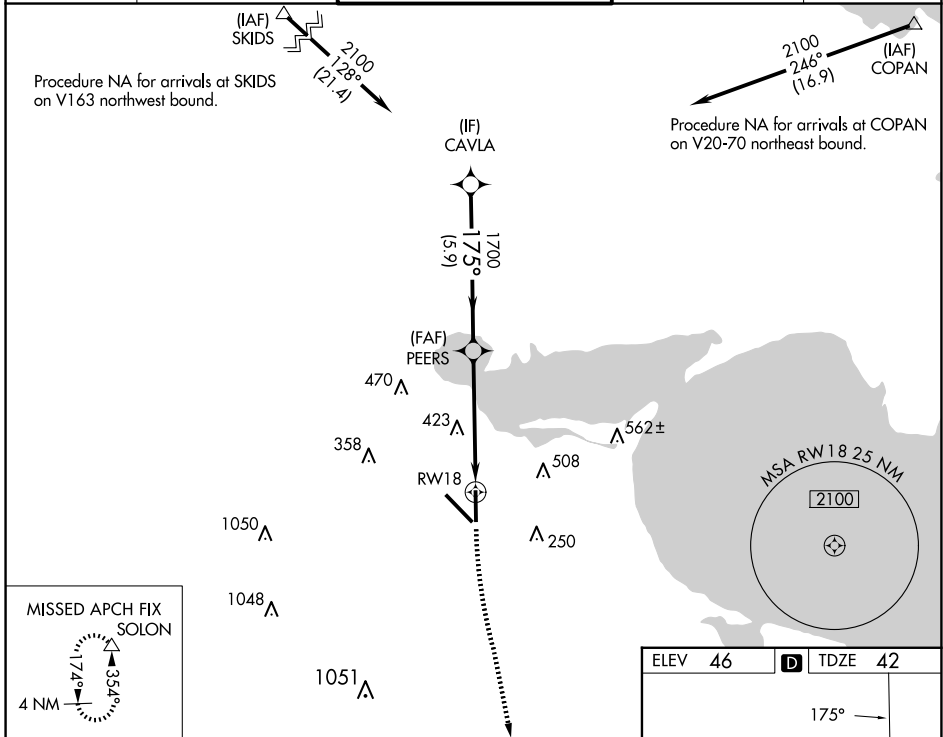
WAAS CH 53635 W18A	APP CRS 175°	Rwy Idg 6080 TDZE 42 Apt Elev 46
--	------------------------	---

RNAV (GPS) RWY 18

CORPUS CHRISTI INTL (CRP)

RNP APCH - GPS.		MALSRL	MISSED APPROACH: Climb to 500 then climbing left turn to 2000 direct SOLON and hold.
<p>▼ For uncompensated Baro-VNAV systems, LNAV/VNAV NA below 1°C or above 54°C. For inop ALS, increase LPV Cat E visibility to ¾ SM, all LNAV/VNAV visibilities to ½ SM, and LNAV Cat C, D, and E visibility to 1¾ SM.</p>			

ATIS 126.8	CORPUS APP CON 120.9 348.725	CORPUS TOWER 119.4 257.8	GND CON 121.9 269.15	CLNC DEL 118.55
----------------------	--	------------------------------------	--------------------------------	---------------------------



CATEGORY	A	B	C	D	E
LPV DA		242-½	200 (200-½)		
LNAV/VNAV DA		345-½	303 (300-½)		
LNAV MDA	660-½	618 (700-½)	660-1⅜	618 (700-1⅜)	
CIRCLING	660-1 614 (700-1)	780-1 734 (800-1)	820-2¼ 774 (800-2¼)	820-2½ 774 (800-2½)	820-2¾ 774 (800-2¾)

HIRL Rwy 13-31 and 18-36

SC-3, 20 FEB 2025 to 20 MAR 2025

SC-3, 20 FEB 2025 to 20 MAR 2025