

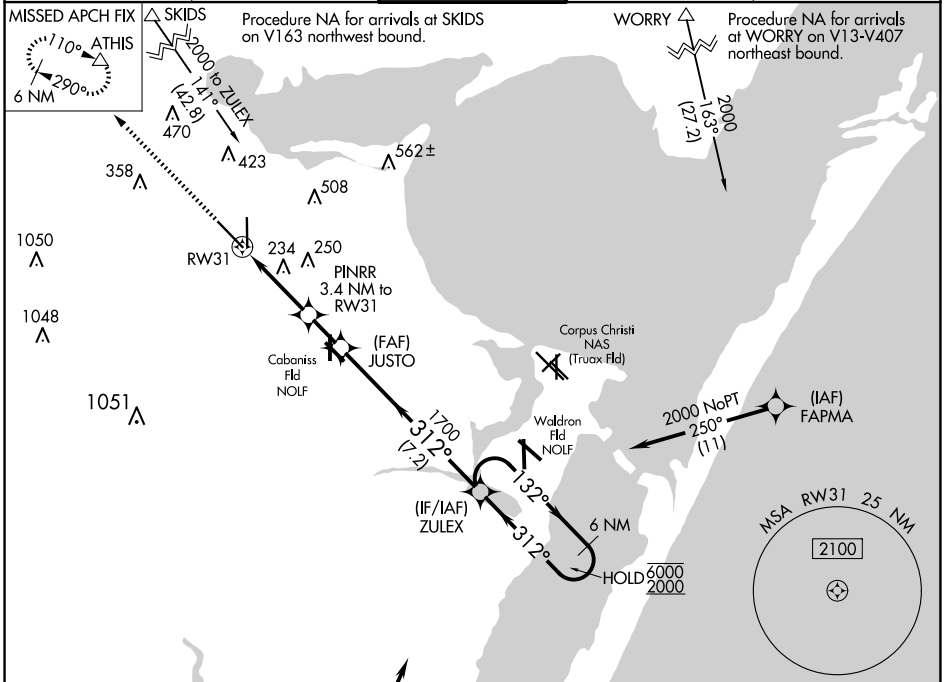
APP CRS	Rwy Idg	<b>7510</b>
<b>312°</b>	TDZE	<b>43</b>
	Apt Elev	<b>46</b>

# RNAV (GPS) X RWY 31

CORPUS CHRISTI INTL (CRP)

RNP APCH - GPS	MALSR	MISSED APPROACH: Climb to 2000 direct ATHIS and hold.
For inop ALS, increase LNAV Cat E visibility to 1 3/8 mile.		

ATIS <b>126.8</b>	CORPUS APP CON <b>120.9 348.725</b>	<b>CORPUS TOWER</b> <b>119.4 257.8</b>	GND CON <b>121.9 269.15</b>	CLNC DEL <b>118.55</b>
----------------------	----------------------------------------	-------------------------------------------	--------------------------------	---------------------------



Procedure NA for arrivals at SKIDS on V163 northwest bound.

Procedure NA for arrivals at WORRY on V13-V407 northeast bound.

Procedure NA for arrivals at SOLON on V13-20-163 southbound.

2000	ATHIS	VGSI and descent angles not coincident (VGSI Angle 3.00/TCH 50).		ZULEX	6 NM Holding Pattern
CATEGORY	A	B	C	D	E
LNAV MDA	500-1/2	457 (500-1/2)	500-7/8	457 (500-7/8)	
CIRCLING	500-1 454 (500-1)	780-1 734 (800-1)	820-2 1/4 774 (800-2 1/4)	820-2 1/2 774 (800-2 1/2)	820-2 3/4 774 (800-2 3/4)

