

RNAV (GPS) Y RWY 31

CORPUS CHRISTI INTL (CRP)

WAAS CH 60914 W31A	APP CRS 312°	Rwy Idg 7510 TDZE 43 Apt Elev 46
----------------------------------------	------------------------	-------------------------------------------------------------

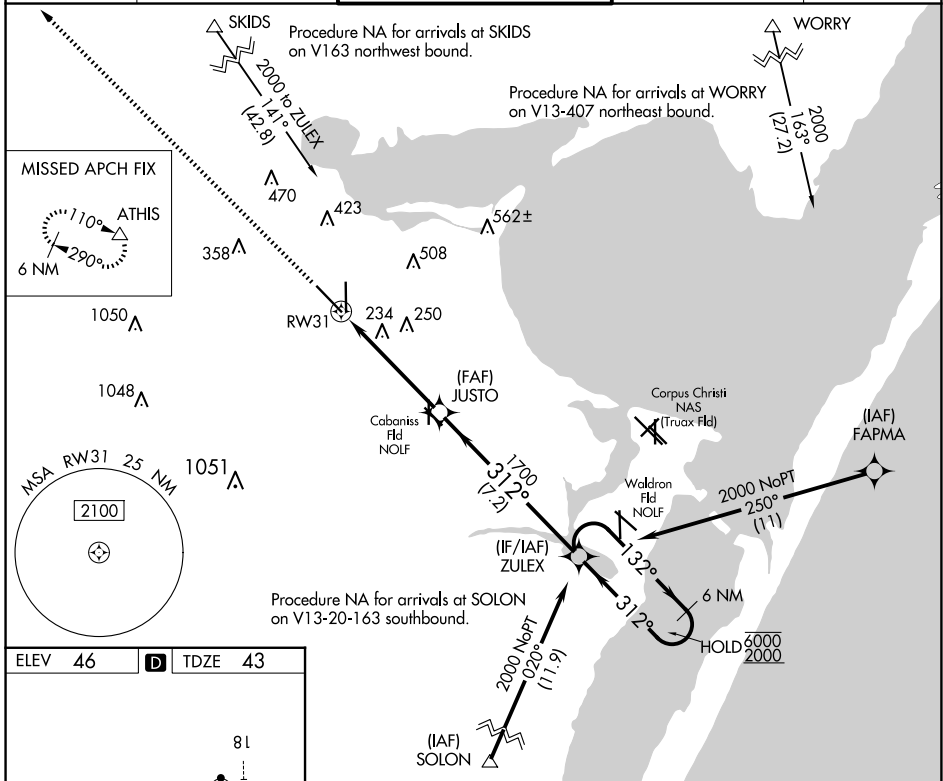
RNP APCH - GPS.

▼ For uncompensated Baro-VNAV systems, LNAV/VNAV NA below -1°C or above 54°C.
 ▲ Procedure NA when Cabaniss Fld traffic patterns active. For inop ALS, increase LPV Cat E visibility to 3/4 SM, LNAV/VNAV all Cats visibility to 3/8 SM, and LNAV Cat E visibility to 1 3/8 SM.

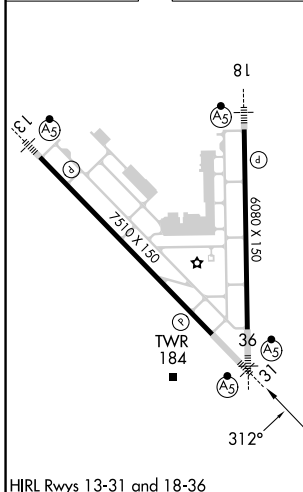


MISSED APPROACH:
Climb to 2000 direct
ATHIS and hold.

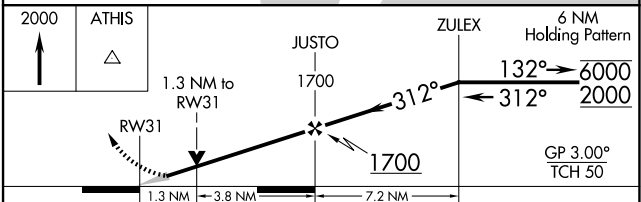
ATIS 126.8	CORPUS APP CON 120.9 348.725	CORPUS TOWER 119.4 257.8	GND CON 121.9 269.15	CLNC DEL 118.55
----------------------	----------------------------------------	------------------------------------	--------------------------------	---------------------------



ELEV 46	D	TDZE 43
---------	----------	---------



HIRL Rwy 13-31 and 18-36
 CORPUS CHRISTI, TEXAS
 Amdt 4A 02NOV23



CATEGORY	A	B	C	D	E
LPV DA		243-1/2	200 (200-1/2)		
LNAV/VNAV DA		356-5/8	313 (400-3/8)		
LNAV MDA	500-1/2	457 (500-1/2)	500-7/8	457 (500-7/8)	
CIRCLING	500-1 454 (500-1)	780-1 734 (800-1)	820-2 1/4 774 (800-2 1/4)	820-2 1/2 774 (800-2 1/2)	820-2 3/4 774 (800-2 3/4)

27°46'N-97°30'W

CORPUS CHRISTI INTL (CRP)

RNAV (GPS) Y RWY 31

SC-3, 20 FEB 2025 to 20 MAR 2025

SC-3, 20 FEB 2025 to 20 MAR 2025