

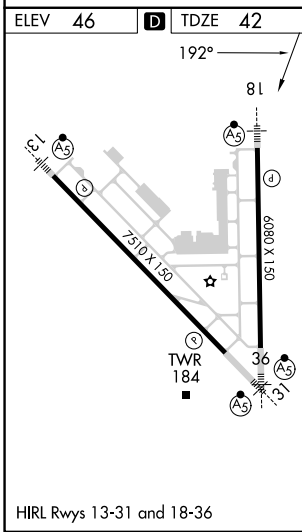
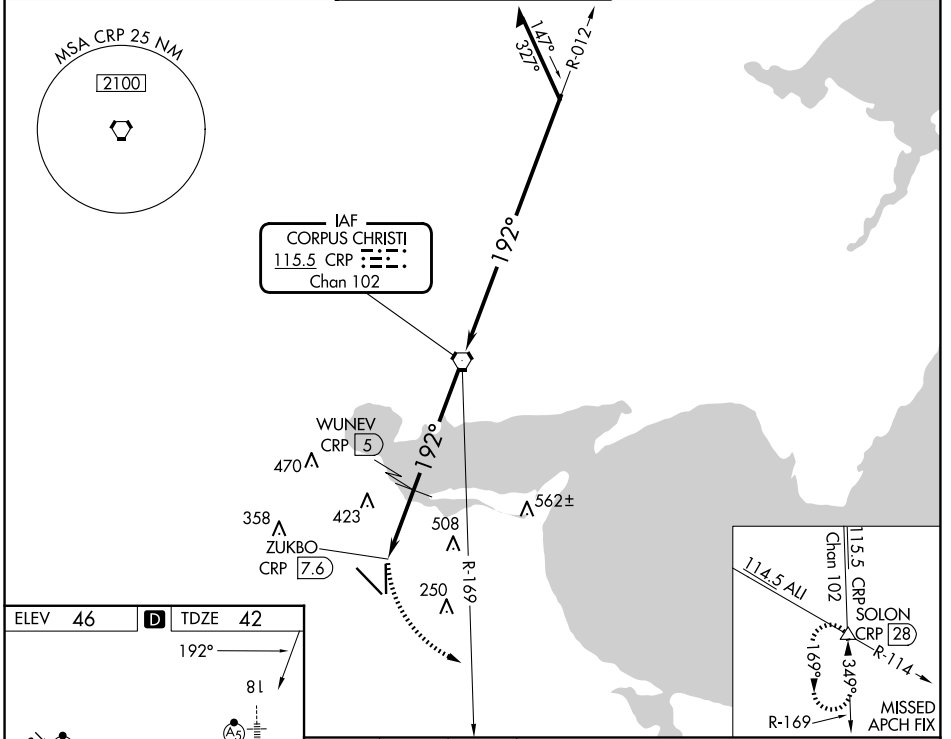
VORTAC CRP 115.5	APP CRS 192°	Rwy Idg TDZE Apt Elev	6080 42 46
Chan 102			

VOR or TACAN RWY 18

CORPUS CHRISTI INTL (CRP)

DME required.		MALSRL	MISSED APPROACH: Climbing left turn to 2000 on heading 150° and CRP VORTAC R-169 to SOLON INT/CRP 28 DME and hold.
Rwy 18 helicopter visibility reduction below 3/4 SM NA. Inop table does not apply.			

ATIS 126.8	CORPUS APP CON 120.9 348.725	CORPUS TOWER 119.4 257.8	GND CON 121.9 269.15	CLNC DEL 118.55
----------------------	--	------------------------------------	--------------------------------	---------------------------



ELEV 46	D	TDZE 42					
192°			81				
2000			CRP R-169	SOLON	CRP VORTAC		
WUNEV CRP 5			ZUKBO CRP 7.6	CRP 6	Remain within 15 NM		
1000			3.00° TCH 50		2100		
1700			012°		192°		
0.2 1.6 NM			1 NM		5 NM		
CATEGORY	A	B	C	D	E		
S-18	680-1	638 (700-1)	680-1¾	638 (700-1¾)			
C CIRCLING	680-1 634 (700-1)	780-1 734 (800-1)	820-2¼ 774 (800-2¼)	820-2½ 774 (800-2½)	820-2¾ 774 (800-2¾)		

SC-3, 20 FEB 2025 to 20 MAR 2025

SC-3, 20 FEB 2025 to 20 MAR 2025