

FLAGSTAFF, ARIZONA


AL-5034 (FAA)

25051

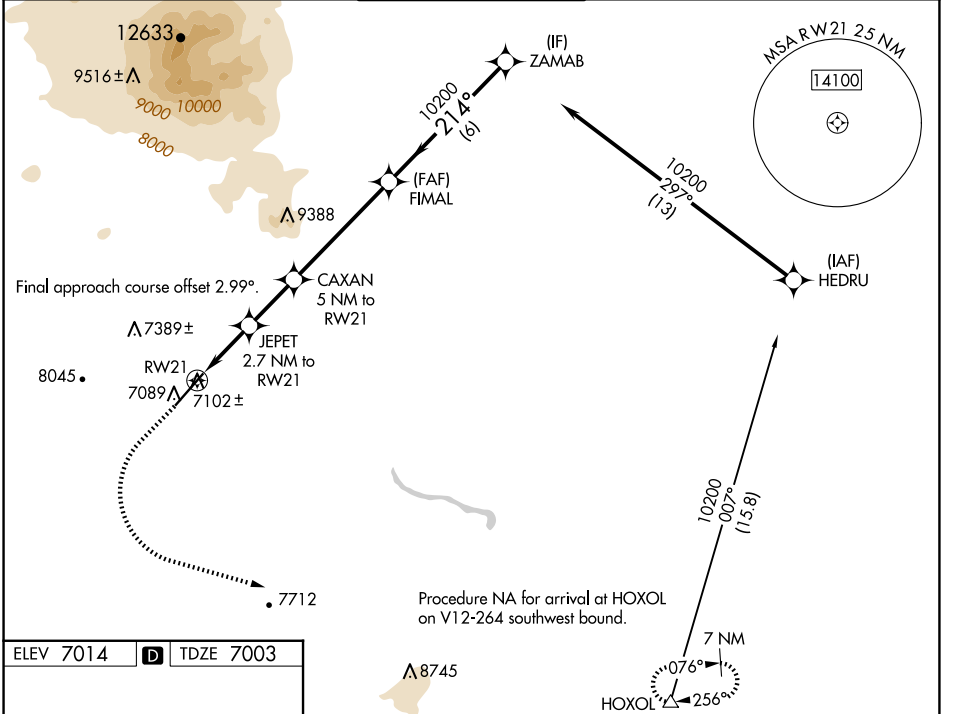
WAAS CH <b>99341</b> <b>W21A</b>	APP CRS <b>214°</b>	Rwy Idg TDZE Apt Elev	<b>7000</b> <b>7003</b> <b>7014</b>
--	------------------------	-----------------------------	---

# RNAV (GPS) RWY 21

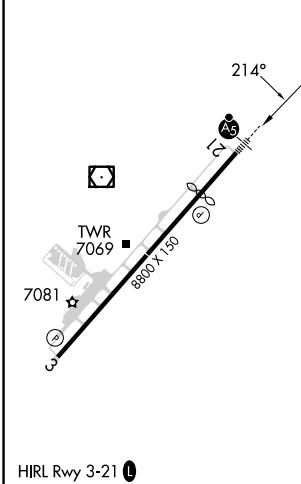
FLAGSTAFF PULLIAM (F.L.G)

<b>▽</b> For uncompensated Baro-VNAV systems, LNAV/VNAV NA below -19 °C (2°F) or above 44°C (111°F). DME/DME RNP-0.3 NA. <b>▲</b> For inop ALS, increase LPV all Cats visibility to 3/8 SM.	MALSR 	MISSED APPROACH: Climb to 7500 then climbing left turn to 10800 direct HOXOL and hold.
--	--	--

ATIS <b>125.8</b>	PHOENIX APP CON <b>126.375 236.775</b>	FLAGSTAFF TOWER ★ <b>134.55 (CTAF) 239.25</b>	GND CON <b>121.9</b>	UNICOM <b>122.95</b>
----------------------	---	--	-------------------------	-------------------------



ELEV 7014	<b>D</b>	TDZE 7003
-----------	----------	-----------



	7500	10800	HOXOL	JEPET	CAXAN	FIMAL	ZAMAB
*LNAV only				2.7 NM to RW21	5 NM to RW21	10200	
				*1 NM to RW21		214°	10200
						8640*	GP 3.00° TCH 52
						7900*	
CATEGORY			A	B	C	D	
LPV DA				7258-1/2	255 (300-1/2)		
LNAV/VNAV DA				7319-5/8	316 (400-3/8)		
LNAV MDA			7360-1/2	357 (400-1/2)	7360-5/8	357 (400-3/8)	
CIRCLING	7520-1	7560-1	8100-3	8560-3			
	506 (600-1)	546 (600-1)	1086 (1100-3)	1546 (1600-3)			

FLAGSTAFF, ARIZONA  
Orig 07DEC17

35°08'N-111°40'W

# FLAGSTAFF PULLIAM (F.L.G)

## RNAV (GPS) RWY 21

SW-4, 20 FEB 2025 to 20 MAR 2025

SW-4, 20 FEB 2025 to 20 MAR 2025