

ILS or LOC RWY 14

BOIRE FLD (ASH)

LOC I-ASH 109.7	APP CRS 139°	Rwy Idg TDZE Apt Elev	5650 200 200
---------------------------	------------------------	-----------------------------	---

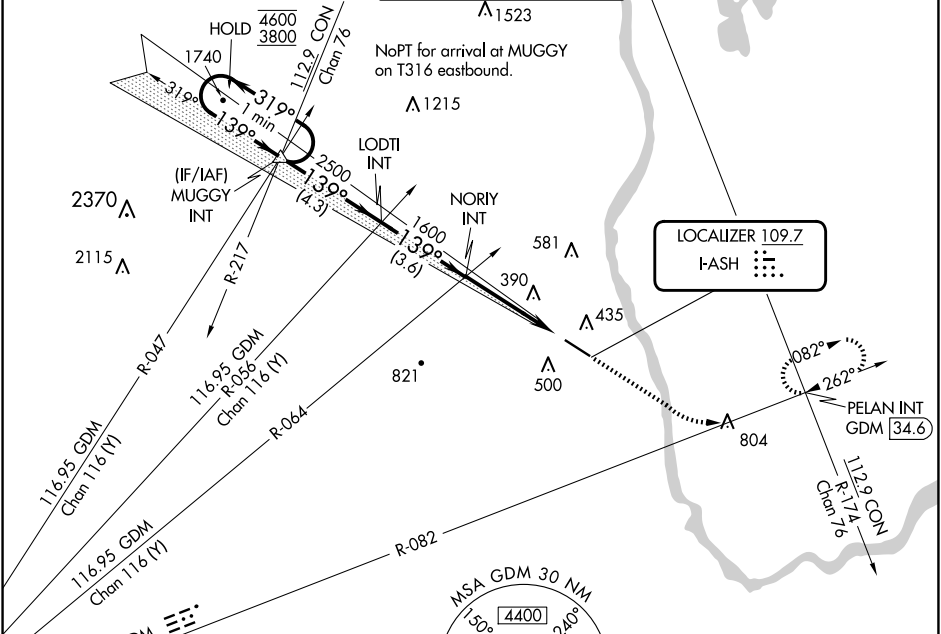
RADAR required for procedure entry.

For inop ALS, increase S-LOC Cat C/D visibility to 1 3/4 SM.

MALS

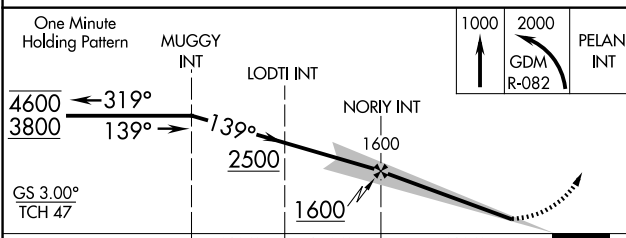
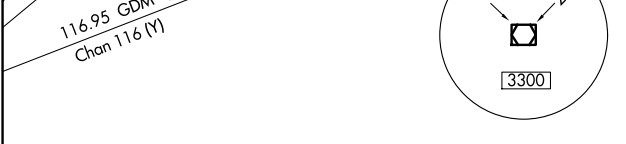
MISSED APPROACH: Climb to 1000 then climbing left turn to 2000 on GDM VOR/DME R-082 to PELAN INT/GDM R-082/34.6 DME and hold.

ATIS 125.1	BOSTON APP CON 124.9 269.075	NASHUA TOWER * 133.2 (CTAF)	GND CON 121.8	CLNC DEL 121.8
----------------------	--	---------------------------------------	-------------------------	--------------------------



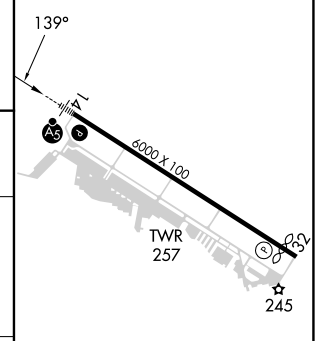
NE-1, 20 FEB 2025 to 20 MAR 2025

NE-1, 20 FEB 2025 to 20 MAR 2025



CATEGORY	A	B	C	D
S-ILS 14	400-1/2 200 (200-1/2)			
S-LOC 14	820-1/2	620 (700-1/2)	820-1 3/8	620 (700-1 3/8)
CIRCLING	840-1 640 (700-1)	860-1 660 (700-1)	920-2 720 (800-2)	980-2 1/2 780 (800-2 1/2)

ELEV 200	D	TDZE 200
----------	---	----------



HIRL Rwy 14-32	Ⓛ
REIL Rwy 32	Ⓛ
FAF to MAP 4.3 NM	
Knots	60 90 120 150 180
Min:Sec	4:18 2:52 2:09 1:43 1:26