

|  |                        |  |
|--|------------------------|--|
| WAAS<br>CH <b>77704</b><br><b>W23A</b> | APP CRS<br><b>230°</b> | Rwy ldg <b>11498</b><br>TDZE <b>87</b><br>Apt Elev <b>93</b> |
|--|------------------------|--|

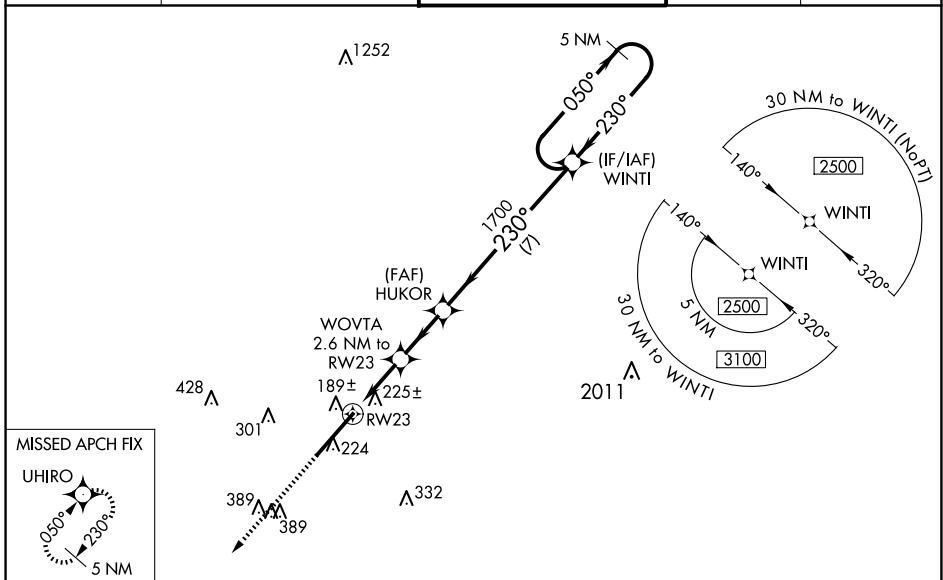
# RNAV (GPS) RWY 23

KINSTON RGNL JETPORT AT STALLINGS FLD (ISO)

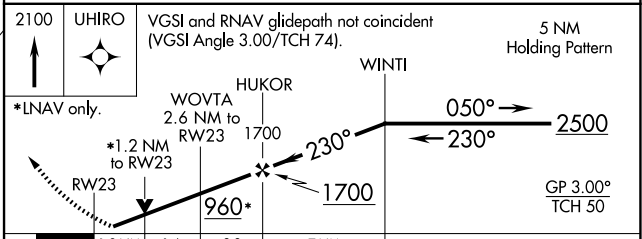
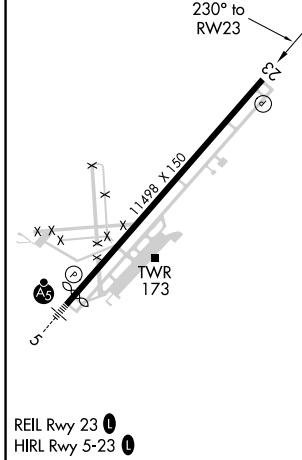
**⚠** Baro-VNAV NA when using Seymour Johnson AFB altimeter setting. For uncompensated Baro-VNAV systems, LNAV/VNAV NA below -15°C (5°F) or above 54°C (130°F). DME/DME RNP-0.3 NA. VDP NA with Seymour Johnson AFB altimeter setting. Rwy 23 helicopter visibility reduction below ¾ SM NA. When local altimeter setting not received, use Seymour Johnson AFB altimeter setting and increase LPV DA to 432, LNAV/VNAV DA to 413, and all MDA 60 feet. Increase LPV all Cats and LNAV Cats C and D visibility ¼ mile, and increase LNAV/VNAV all Cats and Circling Cat D visibility ¼ mile.

**⚠** MISSED APPROACH: Climb to 2100 direct UHIRO and hold.

|                         |   |   |                         |                         |
|-------------------------|---|---|-------------------------|-------------------------|
| AWOS-3<br><b>132.75</b> | SEYMOUR JOHNSON APP CON *<br><b>127.3 273.6</b> | KINSTON TOWER *<br><b>120.6 (CTAF) 335.55</b> | GND CON<br><b>121.9</b> | UNICOM<br><b>122.95</b> |
|-------------------------|---|---|-------------------------|-------------------------|



|                |                |
|----------------|----------------|
| ELEV <b>93</b> | TDZE <b>87</b> |
|----------------|----------------|



| CATEGORY     | A                   | B           | C                      | D                    |
|--------------|---------------------|-------------|------------------------|----------------------|
| LPV DA       | 390-1 303 (300-1)   |             |                        |                      |
| LNAV/VNAV DA | 437-1½ 350 (400-1½) |             |                        |                      |
| LNAV MDA     | 540-1               | 453 (500-1) | 540-1¾                 | 453 (500-1½)         |
| CIRCLING     | 580-1               | 487 (500-1) | 700-1¾<br>607 (700-1¾) | 740-2<br>647 (700-2) |

# RNAV (GPS) RWY 23

SE-2, 20 FEB 2025 to 20 MAR 2025

SE-2, 20 FEB 2025 to 20 MAR 2025