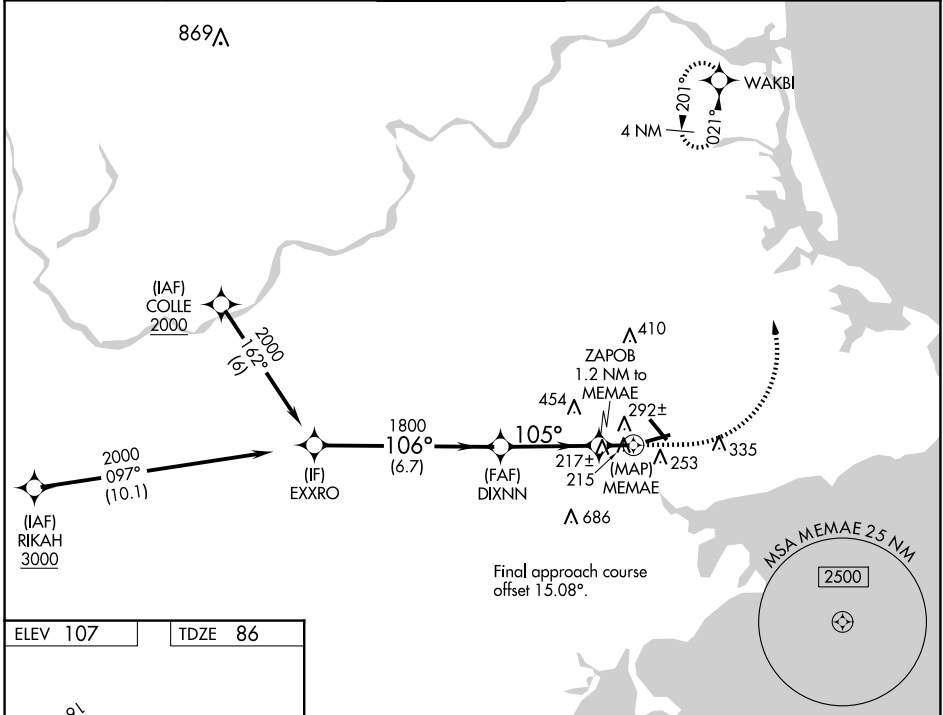


WAAS CH 65640 W09A	APP CRS 105°	Rwy Idg TDZE Apt Elev	4755 86 107
--	------------------------	-----------------------------	--

RNAV (GPS) RWY 9

BEVERLY RGNL (BVY)

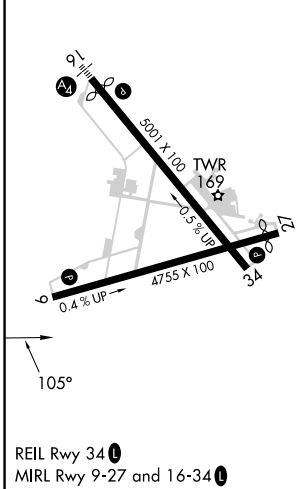
RNP APCH - GPS.		MISSED APPROACH: Climb to 600 then climbing left turn to 2000 direct WAKBI and hold.		
<p>▼ Rwy 9 helicopter visibility reduction below 1 SM NA. ▲ Straight-in Rwy 9 NA at night, Circling Rwy 9 NA at night.</p>				
ATIS 119.2	BOSTON APP CON 124.4 279.6	BEVERLY TOWER★ 125.2 (CTAF) 0	GND CON 121.6	UNICOM 122.95



NE-1, 20 FEB 2025 to 20 MAR 2025

NE-1, 20 FEB 2025 to 20 MAR 2025

ELEV 107	TDZE 86
----------	---------



BEVERLY, MASSACHUSETTS
Amdt 1 28DEC23

VGSi and descent angles not coincident (VGSi Angle 3.00/TCH 43).		600	2000	WAKBI
		↑	↪	✦
CATEGORY	A	B	C	D
LP MDA	480-1	394 (400-1)	480-1 ¹ / ₈	394 (400-1 ¹ / ₈)
LNAV MDA	560-1	474 (500-1)	560-1 ³ / ₈	474 (500-1 ³ / ₈)
☑ CIRCLING	600-1	493 (500-1)	820-2 713 (800-2)	820-2 ¹ / ₄ 713 (800-2 ¹ / ₄)

42°35'N-70°55'W

BEVERLY RGNL (BVY)
RNAV (GPS) RWY 9