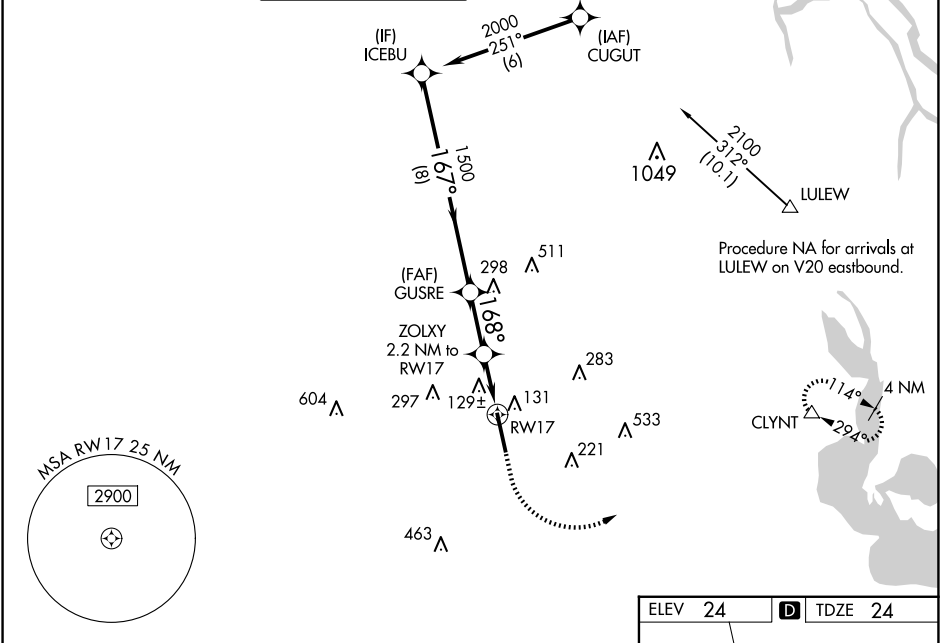


WAAS CH <b>82501</b> <b>W17A</b>	APP CRS <b>168°</b>	Rwy Idg TDZE <b>24</b> Apt Elev <b>24</b>	<b>8002</b>
--	------------------------	---	-------------

# RNAV (GPS) RWY 17

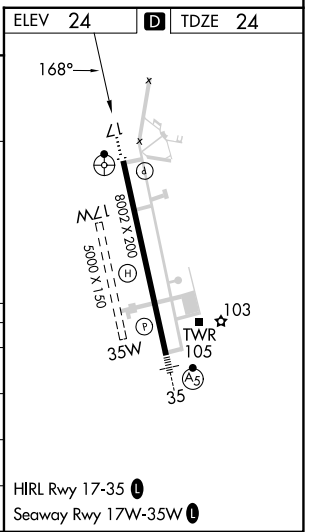
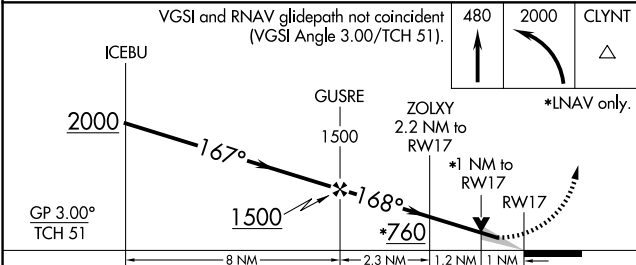
ACADIANA RGNL (A.R.A.)

RNP APCH.					ODALS		MISSED APPROACH: Climb to 480 then climbing left turn to 2000 direct CLYNT and hold.	
▼ Circling NA to Rwys 17W and 35W. Inop table does not apply to LPV. For inop ALS, increase LNAV/VNAV all Cats visibility to 1½ SM and LNAV Cats C/D visibility to 1 SM. For uncompensated Baro-VNAV systems, LNAV/VNAV NA below -3°C or above 54°C.								
ASOS <b>133.325</b>	LAFAYETTE APP CON* <b>121.1 268.7</b>	ACADIANA TOWER* <b>125.0 (CTAF) 239.3</b>	GND CON <b>121.7</b>	CLNC DEL <b>121.7</b>	CLNC DEL <b>118.05</b> (when twr closed)	UNICOM <b>122.95</b>	<b>122.7</b>	



SC-4, 20 FEB 2025 to 20 MAR 2025

SC-4, 20 FEB 2025 to 20 MAR 2025



CATEGORY	A	B	C	D
LPV DA		274-¾	250 (300-¾)	
LNAV/VNAV DA		420-1½	396 (400-1½)	
LNAV MDA	380-¾ 356 (400-¾)		380-7/8 356 (400-7/8)	
<b>C</b> CIRCLING	440-1 416 (500-1)	480-1 456 (500-1)	600-1½ 576 (600-1½)	680-2 656 (700-2)