

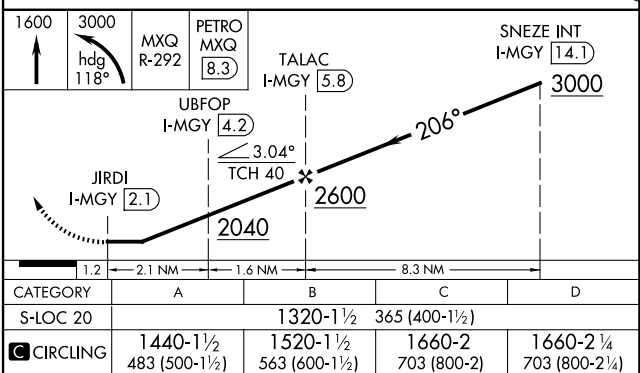
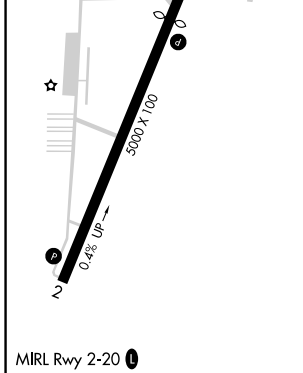
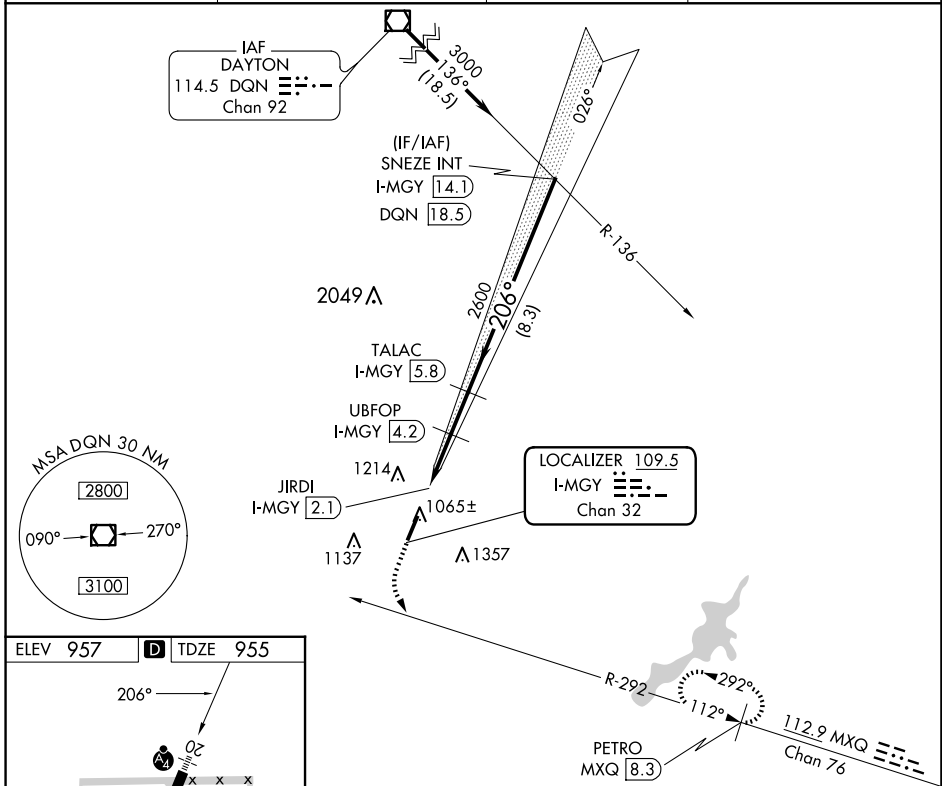
LOC/DME I-MGY <b>109.5</b> Chan <b>32</b>	APP CRS <b>206°</b>	Rwy ldg TDZE <b>955</b> Apt Elev <b>957</b>	<b>4410</b>
---	------------------------	---	-------------

# LOC RWY 20

DAYTON/WRIGHT BROTHERS (MGY)

DME required.		MALS	MISSED APPROACH: Climb to 1600 then climbing left turn to 3000 on heading 118° and MXQ VOR/DME R-292 to PETRO MXQ 8.3 DME and hold.
<p>▼ Rwy 20 helicopter visibility reduction below 3/4 SM NA.</p> <p>▲ NA Inop table does not apply.</p>			

ASOS <b>118.375</b>	COLUMBUS APP CON <b>118.85 269.275</b>	CLNC DEL <b>119.4</b>	UNICOM <b>122.8 (CTAF) 0</b>
------------------------	---	--------------------------	---------------------------------



EC-2, 20 FEB 2025 to 20 MAR 2025

EC-2, 20 FEB 2025 to 20 MAR 2025