

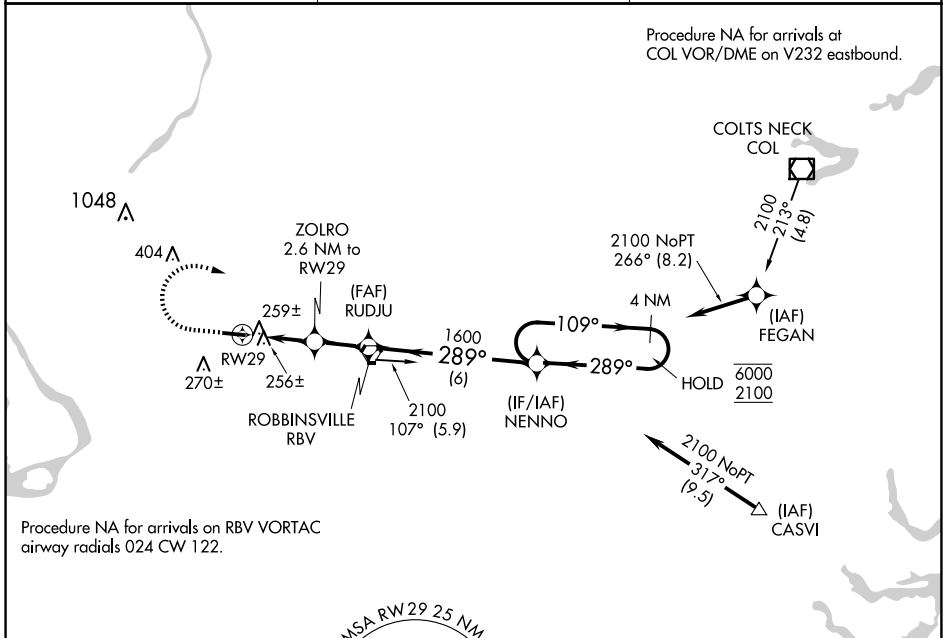
APP CRS <b>289°</b>	Rwy ldg TDZE Apt Elev	<b>3975</b> <b>118</b> <b>118</b>
------------------------	-----------------------------	---

# RNAV (GPS) RWY 29

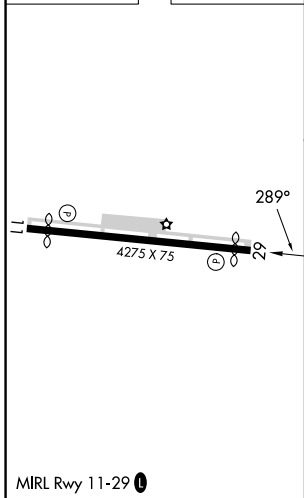
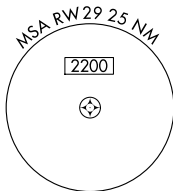
TRENTON-ROBBINSVILLE (N87)

RNP APCH.	MISSED APPROACH: Climb to 1000, then climbing right turn to 2100 direct NENNO and hold.
<p>Procedure NA at night. Rwy 29 helicopter visibility reduction below 1 SM NA. Use Wrightstown altimeter setting.</p>	

MC GUIRE APP CON <b>126.475 363.8</b>	UNICOM <b>123.0 (CTAF)</b>	<b>123.3 0</b>
--	-------------------------------	----------------



ELEV 118	TDZE 118
----------	----------



1000	2100	NENNO	Visual Segment - Obstacles.	
↑	↷	✦	NENNO	4 NM Holding Pattern
RWY29		ZOLRO 2.6 NM to RWY29	RUDJU	NENNO
980		1600	109° →	6000
← 289°				2100
2.6 NM		1.9 NM	6 NM	
CATEGORY	A	B	C	D
LNAV MDA	540-1	422 (500-1)	540-1½	422 (500-1½)
CIRCLING	680-1	562 (600-1)	680-1½	760-2
			562 (600-1½)	642 (700-2)

NE-2, 20 FEB 2025 to 20 MAR 2025

NE-2, 20 FEB 2025 to 20 MAR 2025