

WAAS CH <b>82234</b>	APP CRS <b>279°</b>	Rwy Idg TDZE Apt Elev	<b>5013</b> <b>1044</b> <b>1044</b>
-------------------------	------------------------	-----------------------------	---

# RNAV (GPS) RWY 28

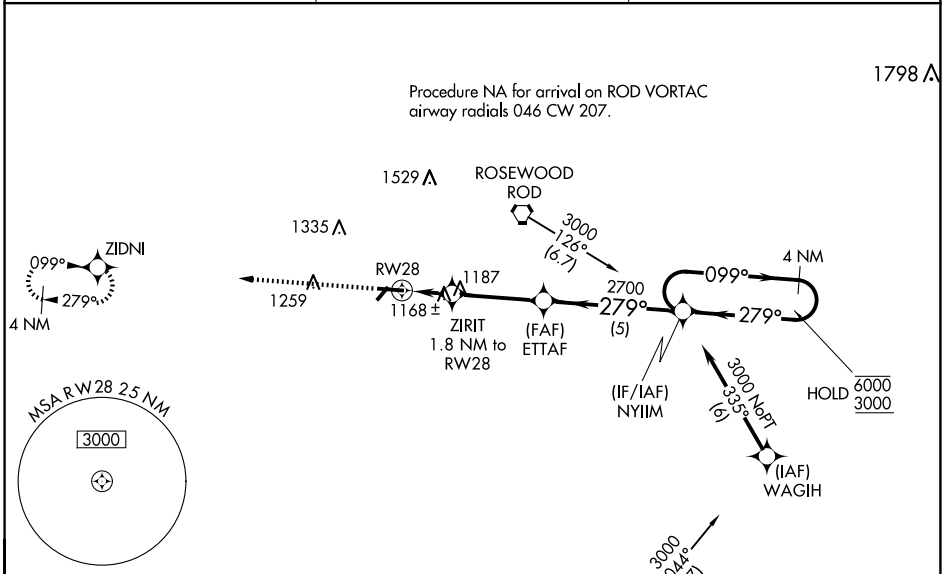
SIDNEY MUNI (SCA)

RNP APCH.

**⚠** Rwy 28 helicopter visibility reduction below 1 SM NA. Baro-VNAV NA when using James M. Cox Dayton Intl altimeter setting. For uncompensated Baro-VNAV systems, LNAV/VNAV NA below -22°C or above 54°C. When local altimeter setting not received, use James M. Cox Dayton Intl altimeter setting: increase LPV DA to 1355; increase LNAV/VNAV DA to 1365; increase all MDA 60 feet and LNAV Cat C visibility and Circling Cat C visibility ¼ SM. Straight-in hold. Rwy 28 at night, operational VGSI required, remain at or above VGSI glidepath until threshold.

**MISSED APPROACH:**  
Climb to 3000  
direct ZIDNI and  
hold.

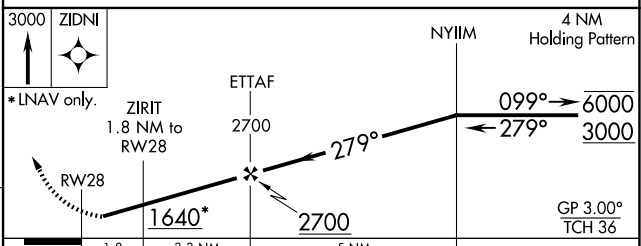
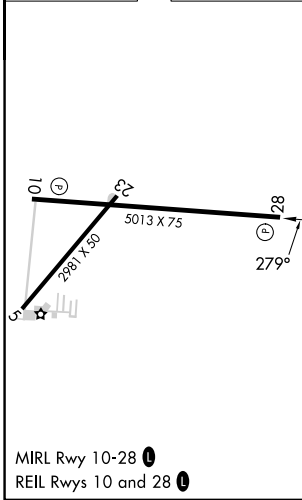
AWOS-3 <b>120.425</b>	COLUMBUS APP CON <b>134.45 294.5</b>	UNICOM <b>123.05 (CTAF)</b>
--------------------------	---	--------------------------------



EC-2, 20 FEB 2025 to 20 MAR 2025

EC-2, 20 FEB 2025 to 20 MAR 2025

ELEV 1044	TDZE 1044
-----------	-----------



CATEGORY	A	B	C	D
LPV DA	1302-1	258 (300-1)		NA
LNAV/VNAV DA	1312-1	268 (300-1)		NA
LNAV MDA	1420-1	376 (400-1)		NA
<b>C</b> CIRCLING	1460-1 416 (500-1)	1520-1 476 (500-1)	1640-1½ 596 (600-1½)	NA

SIDNEY, OHIO  
MIRL Rwy 10-28  
REIL Rwy 10 and 28

40°14'N-84°09'W

# RNAV (GPS) RWY 28

SIDNEY MUNI (SCA)