

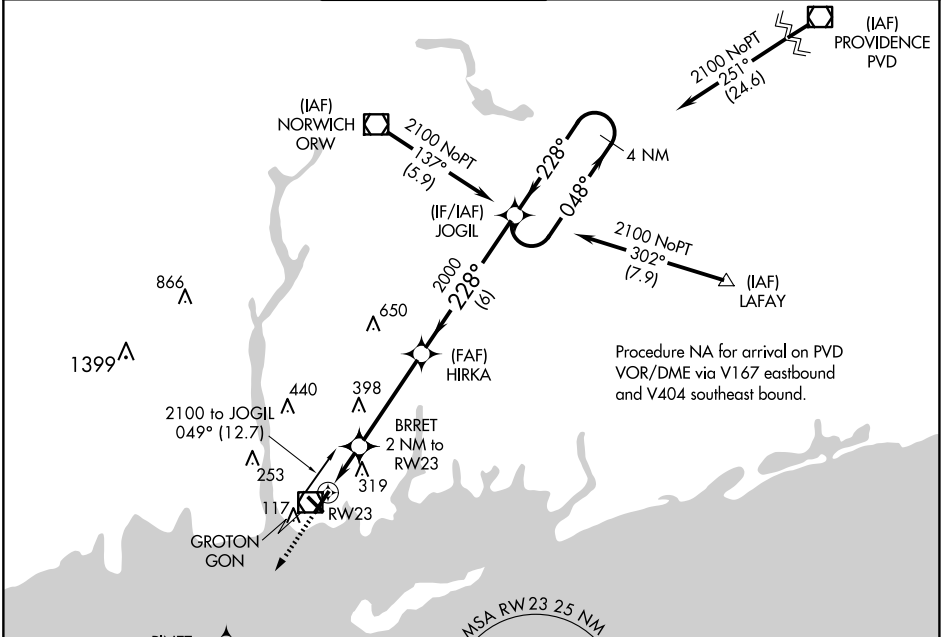
APP CRS	Rwy Idg	<b>5000</b>
<b>228°</b>	TDZE	<b>8</b>
	Apt Elev	<b>9</b>

# RNAV (GPS) RWY 23

GROTON-NEW LONDON (GON)

RNP APCH-GPS		MISSED APPROACH: Climb to 2000 direct PINET and hold.			
<p><b>▼</b> Circling Rwy 15 NA at night.</p> <p><b>▲</b> Rwy 23 helicopter visibility reduction below 1 SM NA.</p>					

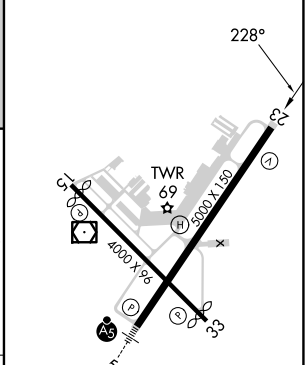
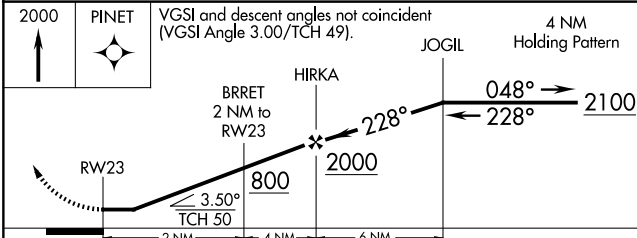
ATIS <b>127.0</b>	PROVIDENCE APP CON * <b>125.75 319.2</b>	GROTON TOWER * <b>125.6 (CTAF) 0 236.775</b>	GND CON <b>121.65 236.775</b>	CLNC DEL <b>119.85</b> (when twr closed)	CLNC DEL <b>121.65</b>
----------------------	---	---	----------------------------------	--	---------------------------



Procedure NA for arrival on PVD VOR/DME via V167 eastbound and V404 southeast bound.



ELEV	<b>9</b>	TDZE	<b>8</b>
------	----------	------	----------



CATEGORY	A	B	C	D
LNAV MDA	560-1	552 (600-1)	560-1½	552 (600-1½)
CIRCLING	580-1 571 (600-1)	620-1 611 (700-1)	700-2 691 (700-2)	840-2¾ 831 (900-2¾)

REIL Rwy 23 and 33  
HIRL Rwy 5-23 and 15-33

NE-1, 20 FEB 2025 to 20 MAR 2025

NE-1, 20 FEB 2025 to 20 MAR 2025