

WAAS CH <b>45521</b> <b>W05A</b>	APP CRS <b>048°</b>	Rwy Idg TDZE Apt Elev	<b>5000</b> <b>8</b> <b>9</b>
--	------------------------	-----------------------------	-------------------------------------

# RNAV (GPS) RWY 5

## GROTON-NEW LONDON (GON)

RNP APCH - GPS.

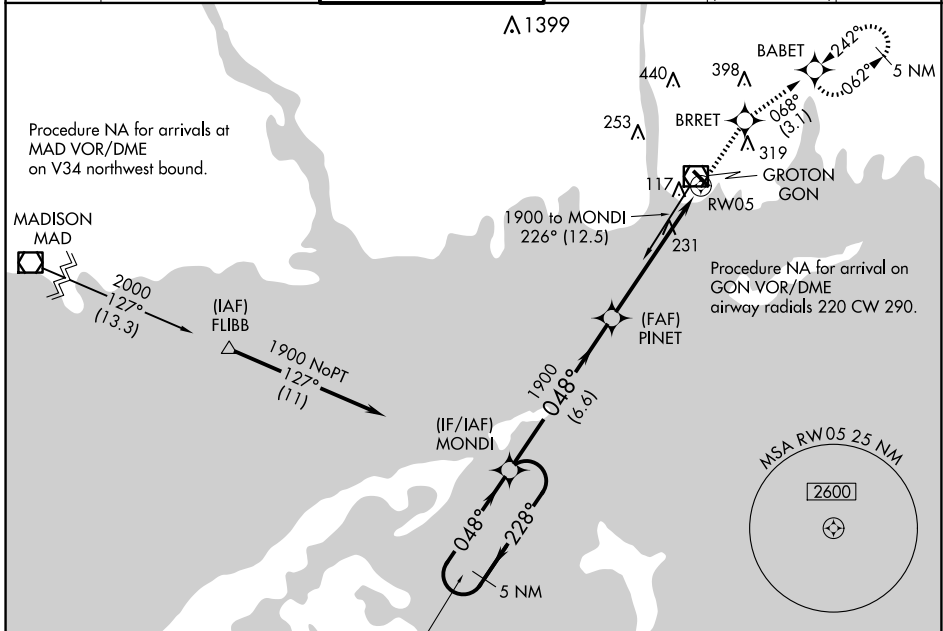
**⚠** Circling Rwy 15 NA at night. For uncompensated Baro-VNAV systems, procedure NA below -15°C or above 54°C. For inop ALS, increase LPV all Cats visibility to RVR 4500 and LNAV Cats visibility C/D to 1%.  
**⚠** Procedure NA for arrivals at MAD VOR/DME on V34 northwest bound.

MALSR



MISSED APPROACH: Climb to 2100 direct BRRET and on track 068° to BABET and hold, continue climb-in-hold to 2100.

ATIS <b>127.0</b>	PROVIDENCE APP CON ★ <b>125.75 319.2</b>	GROTON TOWER ★ <b>125.6 (CTAF) 0 236.775</b>	GND CON <b>121.65 236.775</b>	CLNC DEL <b>119.85</b> (when twr closed)	CLNC DEL <b>121.65</b>
----------------------	---	---	----------------------------------	--	---------------------------



NE-1, 20 FEB 2025 to 20 MAR 2025

NE-1, 20 FEB 2025 to 20 MAR 2025

ELEV 9	<b>D</b> TDZE 8
--------	-----------------

5 NM Holding Pattern	MONDI		PINET		2100	BRRET	BABET
	6000 ← 228°		1900 → 048°		↑	⊙	⊙
GP 3.00° TCH 42	1900		1900		Tr 068°		
	6.6 NM		4.3 NM		1.4 NM to RW05		
CATEGORY	A	B	C	D			
LPV DA	292/24		284 (300-½)				
LNAV/VNAV DA	533/55		525 (600-1)				
LNAV MDA	500/24	492 (500-½)	500/50	492 (500-1)			
CIRCLING	580-1 571 (600-1)	620-1 611 (700-1)	700-2 691 (700-2)	840-2¾ 831 (900-2¾)			

