

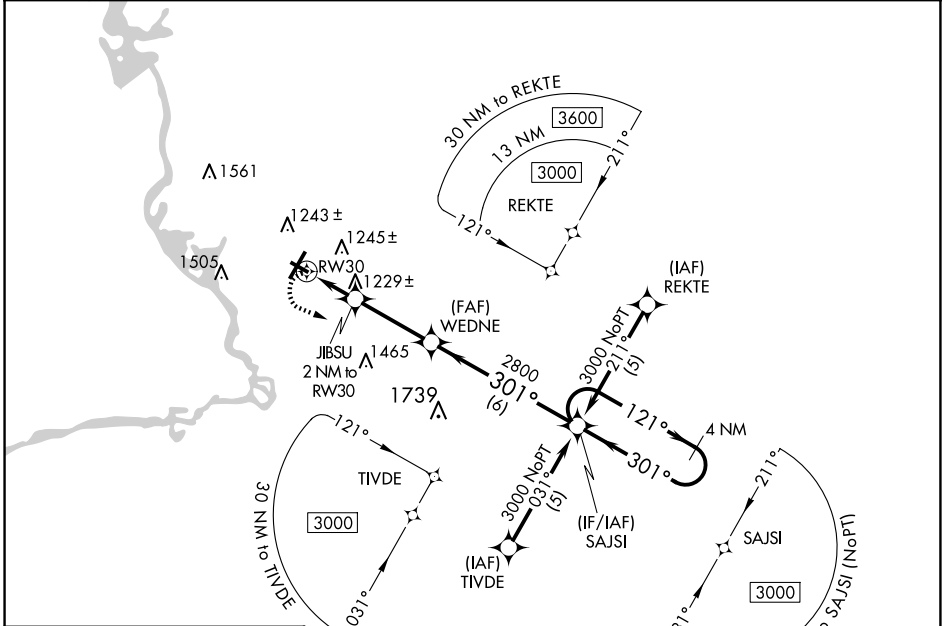
APP CRS	Rwy Idg	<b>3635</b>
<b>301°</b>	TDZE	<b>1108</b>
	Apt Elev	<b>1110</b>

# RNAV (GPS) RWY 30

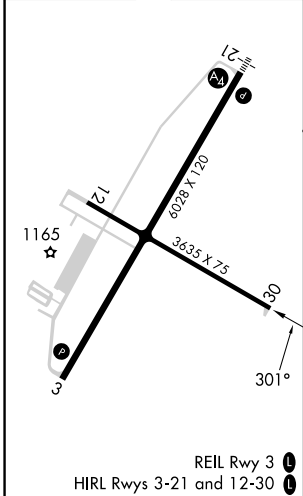
STEVENS POINT MUNI (STE)

RNP APCH - GPS.	<p><b>▼</b> Rwy 30 helicopter visibility reduction below 3/4 SM NA. When local altimeter setting not received, use Mosinee altimeter setting and increase all MDA 60 feet, increase LNAV Cat C and D visibility 1/4 SM. VDP NA when using Mosinee altimeter setting.</p>	<p><b>MISSED APPROACH:</b> Climbing left turn to 3000 direct SAJSI and hold.</p>
-----------------	--	--

AWOS-3 <b>119.275</b>	MINNEAPOLIS CENTER <b>124.4 317.7</b>	UNICOM <b>122.7 (CTAF)</b>
--------------------------	--	-------------------------------



ELEV 1110	TDZE 1108
-----------	-----------



3000 SAJSI	4 NM Holding Pattern			
JIBSU 2 NM to RW30	WEDNE	SAJSI	121° →	3000
1.2 NM to RW30	3.04° TCH 40	2800	← 301°	
1.2	0.8	3.1 NM	6 NM	
CATEGORY	A	B	C	D
LNAV MDA	1520-1	412 (500-1)	1520-1 1/8	412 (500-1 1/8)
<b>CIRCLING</b>	1580-1 470 (500-1)	1600-1 490 (500-1)	1860-2 1/4 750 (800-2 1/4)	1860-2 1/2 750 (800-2 1/2)

EC-3, 20 FEB 2025 to 20 MAR 2025

EC-3, 20 FEB 2025 to 20 MAR 2025