

LOC I-PTK 111.1	APP CRS 095°	Rwy Idg 6520
		TDZE 981
		Apt Elev 981

ILS or LOC RWY 9R

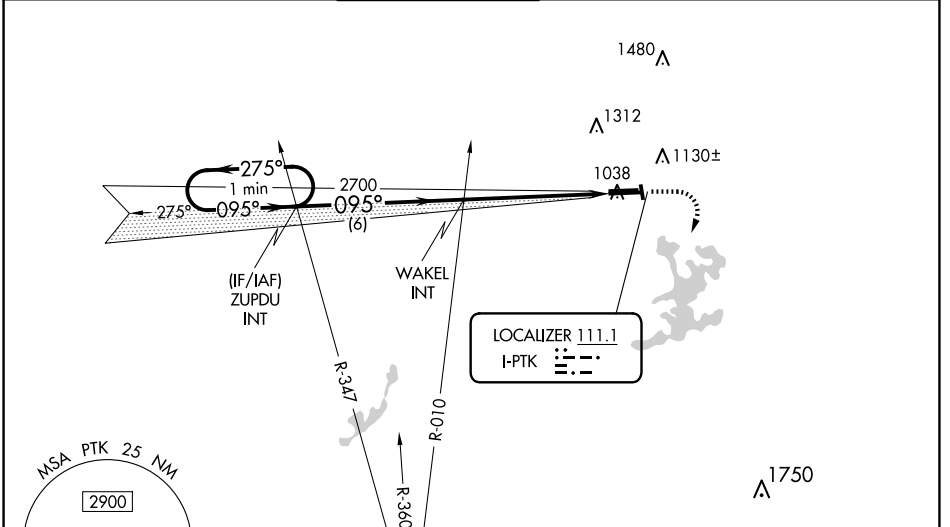
OAKLAND COUNTY INTL (PTK)

RADAR required for procedure entry.

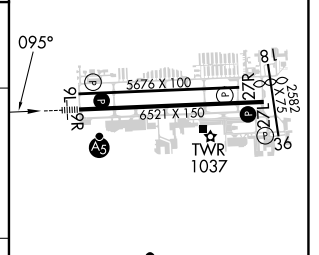
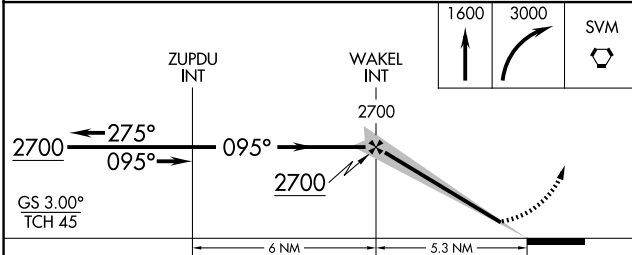
▼ Circling Rwy 9L, 36 NA at night. When local altimeter setting not received, use Coleman A Young Muni altimeter setting and increase DA to 1286 feet and all MDA 120 feet, increase S-LOC 9R Cat B visibility to RVR 4000, Cat C/D visibility 3/8 SM, and Circling Cat B/C/D visibility 1/2 SM. For inop MALS, increase S-LOC 9R Cat C/D visibility to 1 1/2 SM. For inop MALS, when using Coleman A Young altimeter, increase S-ILS 9R all Cats visibility to RVR 4500, and increase S-LOC 9R Cat C/D visibility to 2 SM. **RVR 1800 authorized with the use of FD or AP or HUD to DA, NA when using Coleman A Young Muni altimeter setting.

MALS MISSED APPROACH: Climb to 1600 then climbing right turn to 3000 direct SVM VORTAC and hold.

ATIS 125.025	DETROIT APP CON 132.35 284.0	PONTIAC TOWER * 120.5 (CTAF) 1	GND CON 121.9	CLNC DEL 118.25	UNICOM 122.95
------------------------	--	---	-------------------------	---------------------------	-------------------------



ELEV 981	TDZE 981
----------	----------



CATEGORY	A	B	C	D
S-ILS 9R	** 1181/24		200 (200-1/2)	
S-LOC 9R	1620/24	639 (700-1/2)	1620-1 3/8	639 (700-1 3/8)
C CIRCLING	1620-1	639 (700-1)	1640-1 3/4	1640-2
			659 (700-1 3/4)	659 (700-2)

HIRL Rwy 9R-27L 1
MIRL Rwy 9L-27R
REIL Rwy 27L 1
REIL Rwy 9L and 27R

FAF to MAP 5.3 NM

Knots	60	90	120	150	180
Min:Sec	5:18	3:32	2:39	2:07	1:46

EC-1, 20 FEB 2025 to 20 MAR 2025

EC-1, 20 FEB 2025 to 20 MAR 2025