

LOC I-PTK 111.1	APP CRS 275°	Rwy Idg 6520
		TDZE 974
		Apt Elev 981

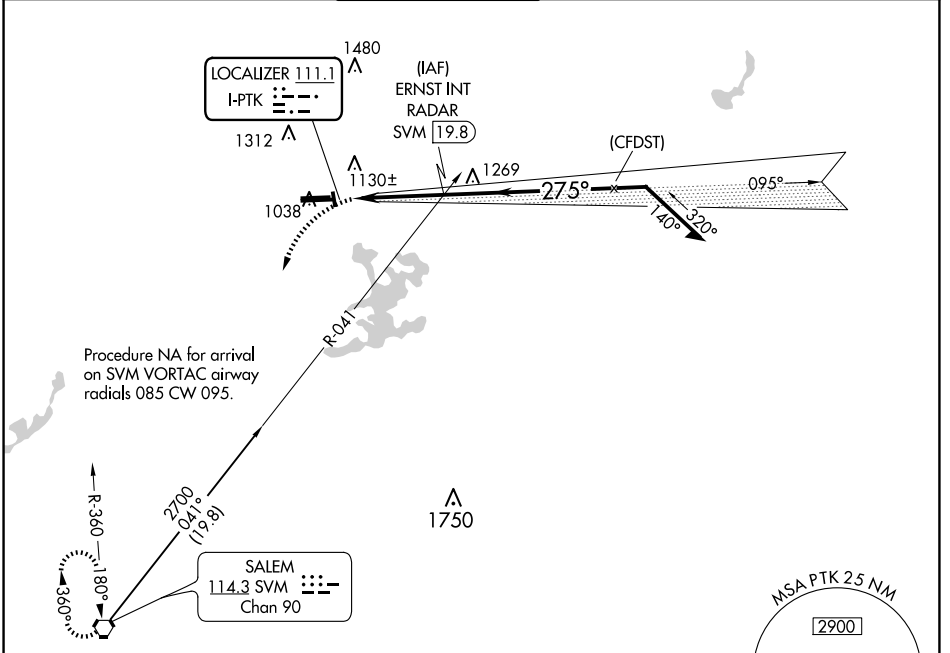
LOC BC RWY 27L

OAKLAND COUNTY INTL (PTK)

⚠ Circling Rwy 9L, 36 NA at night. When local altimeter setting not received, use Coleman A Young Muni altimeter setting and increase all MDA 120 feet, increase S-27L Cat C/D visibility $\frac{3}{8}$ SM and Circling Cat C/D visibility $\frac{1}{2}$ SM.

⚠ MISSED APPROACH: Climbing left turn to 3000 direct SVM VORTAC and hold.

ATIS 125.025	DETROIT APP CON 132.35 284.0	PONTIAC TOWER * 120.5 (CTAF) 0	GND CON 121.9	CLNC DEL 118.25	UNICOM 122.95
------------------------	--	--	-------------------------	---------------------------	-------------------------

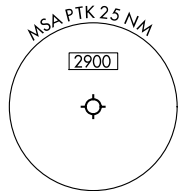


EC-1, 20 FEB 2025 to 20 MAR 2025

EC-1, 20 FEB 2025 to 20 MAR 2025

ELEV 981	D	TDZE 974
----------	----------	----------

BACK COURSE



HIRL Rwy 9R-27L **0**
 MIRL Rwy 9L-27R
 REIL Rwy 27L **0**
 REIL Rws 9L and 27R

FAF to MAP 3.3 NM

Knots	60	90	120	150	180
Min:Sec	3:18	2:12	1:39	1:19	1:06

3000	SVM	ERNST INT RADAR			
Remain within 10 NM		Disregard GS indications.			
I-PTK		2300		2500	
≤ 3.00° TCH 42					
0.7		3.3 NM			
CATEGORY	A	B	C	D	
S-LOC 27L	1440-1	466 (500-1)	1440-1 $\frac{3}{8}$	466 (500-1 $\frac{3}{8}$)	
C CIRCLING	1500-1 519 (600-1)	1540-1 559 (600-1)	1640-1 $\frac{3}{4}$ 659 (700-1 $\frac{3}{4}$)	1640-2 659 (700-2)	