

OCALA, FLORIDA

AL-5055 (FAA)

24193

VORTAC OCF <b>113.7</b> Chan <b>84</b>	APP CRS <b>354°</b>	Rwy Idg <b>6347</b> TDZE <b>80</b> Apt Elev <b>90</b>
--	------------------------	---

# VOR RWY 36

OCALA INTL-JIM TAYLOR FLD (OCF)

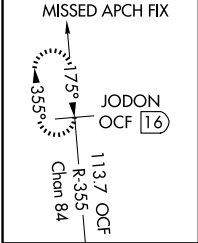
DME required.



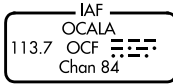
MISSED APPROACH: Climb to 2000 on OCF VORTAC R-355 to JODON/OCF VORTAC 16 DME and hold.

For inop ALS, increase S-36 Cats A/B visibility to 1 SM.

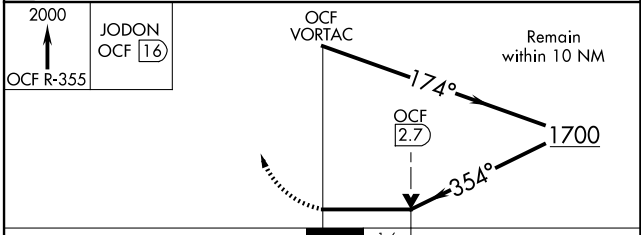
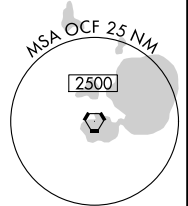
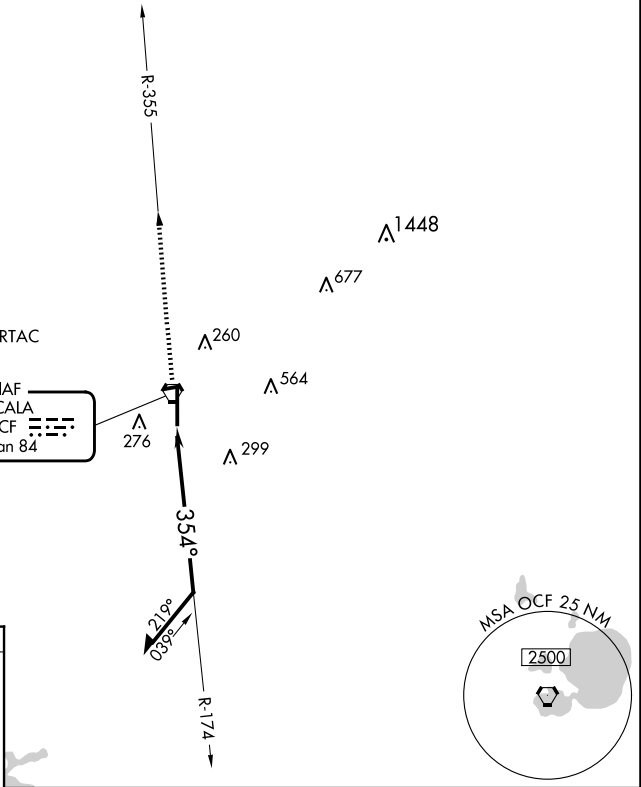
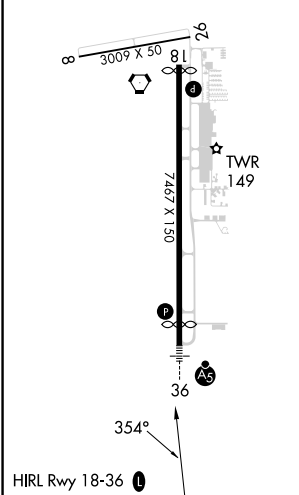
ATIS <b>128.125</b>	JACKSONVILLE APP CON <b>118.6 251.15</b>	OCALA TOWER ★ <b>119.25 (CTAF) 0</b>	GND CON <b>121.4</b>
------------------------	---	---	-------------------------



Procedure NA for arrival on OCF VORTAC  
airway radials 129 CW 208.



ELEV 90	<b>D</b>	TDZE 80
---------	----------	---------



CATEGORY	A	B	C	D
S-36	640-3/4	560 (600-3/4)	640-1 1/8	560 (600-1 1/8)
CIRCLING	640-1	550 (600-1)	760-1 3/4 670 (700-1 3/4)	920-2 3/4 830 (900-2 3/4)

OCALA, FLORIDA  
Amdt 19 23FEB23

29°10'N-82°13'W

OCALA INTL-JIM TAYLOR FLD (OCF)  
**VOR RWY 36**

SE-3, 20 FEB 2025 to 20 MAR 2025

SE-3, 20 FEB 2025 to 20 MAR 2025