

LOC/DME I-VSF 111.3 Chan 50	APP CRS 051°	Rwy ldg TDZE Apt Elev	5501 575 578
---	------------------------	-----------------------------	---

LOC RWY 5

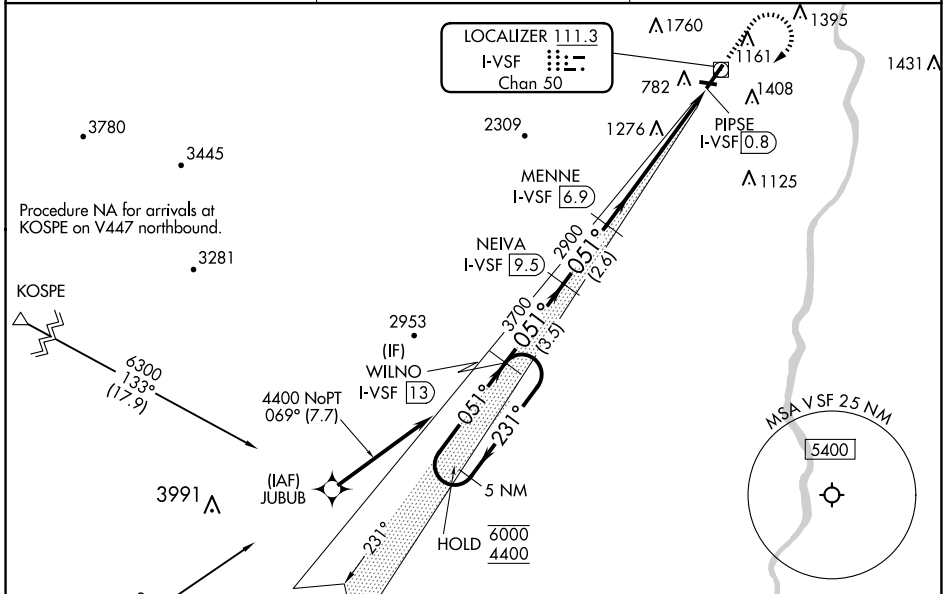
HARTNESS STATE (SPRINGFIELD) (V'SF')

DME required.
RNAV 1-GPS required.

NA
Rwy 5 helicopter visibility reduction below 3/4 SM NA.
Circling to Rwy 11, 23, 29 NA at night.

MISSED APPROACH: Climb to 2000 then climbing right turn to 4400 direct WILNO/13 DME and hold.

ASOS 121.425	BOSTON CENTER 134.7 269.475	UNICOM 122.8 (CTAF)
------------------------	---------------------------------------	-------------------------------



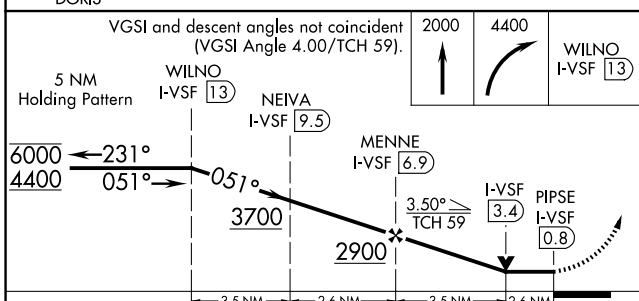
NE-1, 20 FEB 2025 to 20 MAR 2025

NE-1, 20 FEB 2025 to 20 MAR 2025

ELEV 578 | TDZE 575

Procedure NA for arrivals at KOSPE on V447 northbound.

Procedure NA for arrivals at DORIS on V490 westbound.



CATEGORY	A	B	C	D
S-5	1760-1½ 1185 (1200-1½)	1760-1½ 1185 (1200-1½)	1760-3	1185 (1200-3)
CIRCLING	1760-1½ 1182 (1200-1½)	1760-1½ 1182 (1200-1½)	2600-3	2022 (2100-3)

