

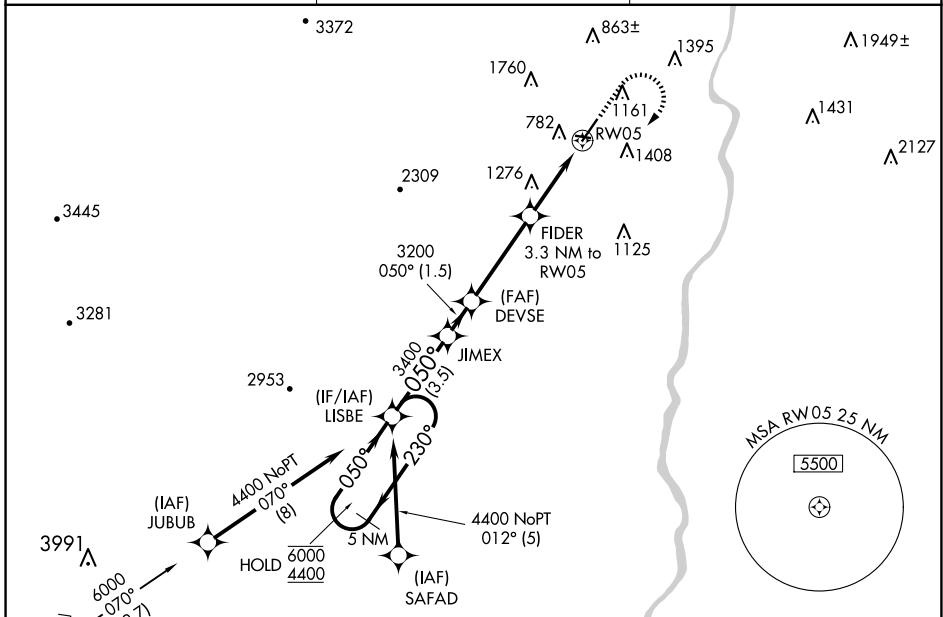
APP CRS 050°	Rwy Idg TDZE Apt Elev	5501 575 578
------------------------	-----------------------------	---

RNAV (GPS) RWY 5

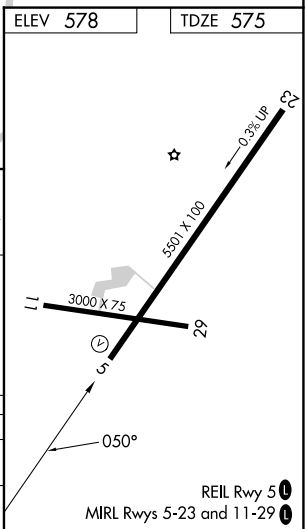
HARTNESS STATE (SPRINGFIELD) (V5F)

RNP APCH - GPS.	MISSED APPROACH: Climb to 2100 then climbing right turn to 4400 direct LISBE and hold.
<p>⚠ Circling Rwy 11, 23, 29 NA at night.</p> <p>⚠ Rwy 5 helicopter visibility reduction below 3/4 SM NA.</p> <p>❄ -20°C</p>	

ASOS 121.425	BOSTON CENTER 134.7 269.475	UNICOM 122.8 (CTAF) 0
------------------------	---------------------------------------	---------------------------------



5 NM Holding Pattern		VGSIs and descent angles not coincident (VGSi Angle 4.00/TCH 59).		2100	4400	LISBE
		LISBE	JIMEX	DEVSE	FIDER	3.3 NM to RW05
6000	← 230°	→ 050°	3400	3200	1820	2.7 NM to RW05
4400						
		← 3.5 NM	← 1.5 NM	← 3.7 NM	← 0.6 NM	← 2.7
CATEGORY	A	B	C	D		
RNAV MDA	1780-1¼ 1205 (1300-1¼)	1780-1½ 1205 (1300-1½)	1780-3	1205 (1300-3)		
CIRCLING	1780-1¼ 1202 (1300-1¼)	1780-1½ 1202 (1300-1½)	2600-3	2022 (2100-3)		



NE-1, 20 FEB 2025 to 20 MAR 2025

NE-1, 20 FEB 2025 to 20 MAR 2025