

NW-1, 20 FEB 2025 to 20 MAR 2025

**DEPARTURE ROUTE DESCRIPTION**

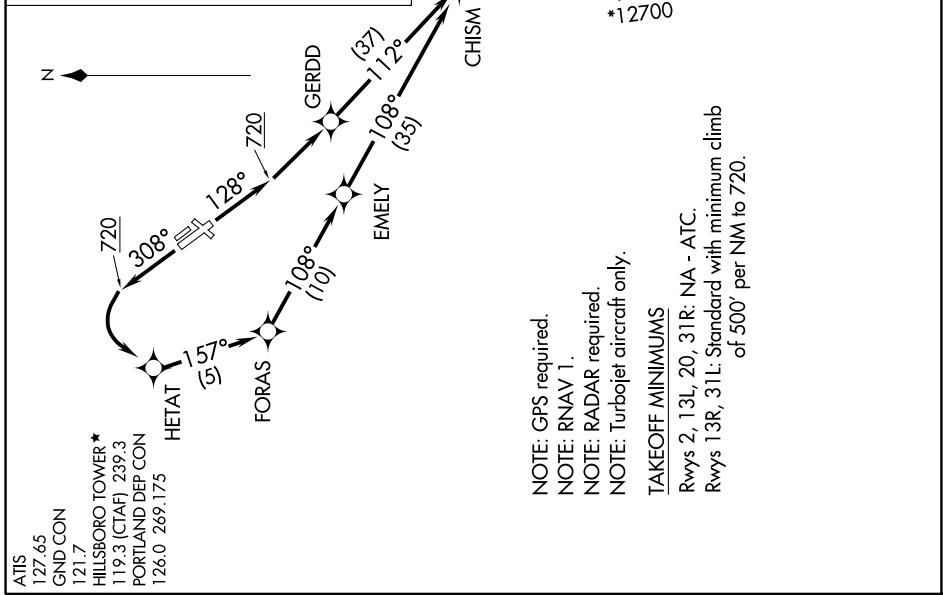
**TAKEOFF RUNWAY 13R:** Climb heading 128° to 720, then climbing left turn direct GERDD, then on depicted route to CHISM, thence . . . .

**TAKEOFF RUNWAY 31L:** Climb heading 308° to 720, then climbing left turn direct HETAT, then on depicted route to CHISM, thence . . . .

. . . . on (Transition). Maintain assigned altitude. Expect filed altitude 10 minutes after departure.

DESCHUTES TRANSITION [CHISM4.DSD]  
JOGEN TRANSITION [CHISM4.JOGEN]  
KIMBERLY TRANSITION [CHISM4.IMB]  
PAWLI TRANSITION [CHISM4.PAWLI]  
RIELY TRANSITION [CHISM4.RIELY]  
SMIGE TRANSITION [CHISM4.SMIGE]

**TOP ALTITUDE:  
ASSIGNED BY ATC**



ATIS 127.65  
 GND CON 121.7  
 HILLSBORO TOWER \* 119.3 (CTAF) 239.3  
 PORTLAND DEP CON 126.0 269.175

NOTE: GPS required.  
 NOTE: RNAV 1.  
 NOTE: RADAR required.  
 NOTE: Turbojet aircraft only.

**TAKEOFF MINIMUMS**  
 Rwy's 2, 13L, 20, 31R: NA - ATC.  
 Rwy's 13R, 31L: Standard with minimum climb of 500' per NM to 720.

NOTE: Chart not to scale.

NW-1, 20 FEB 2025 to 20 MAR 2025