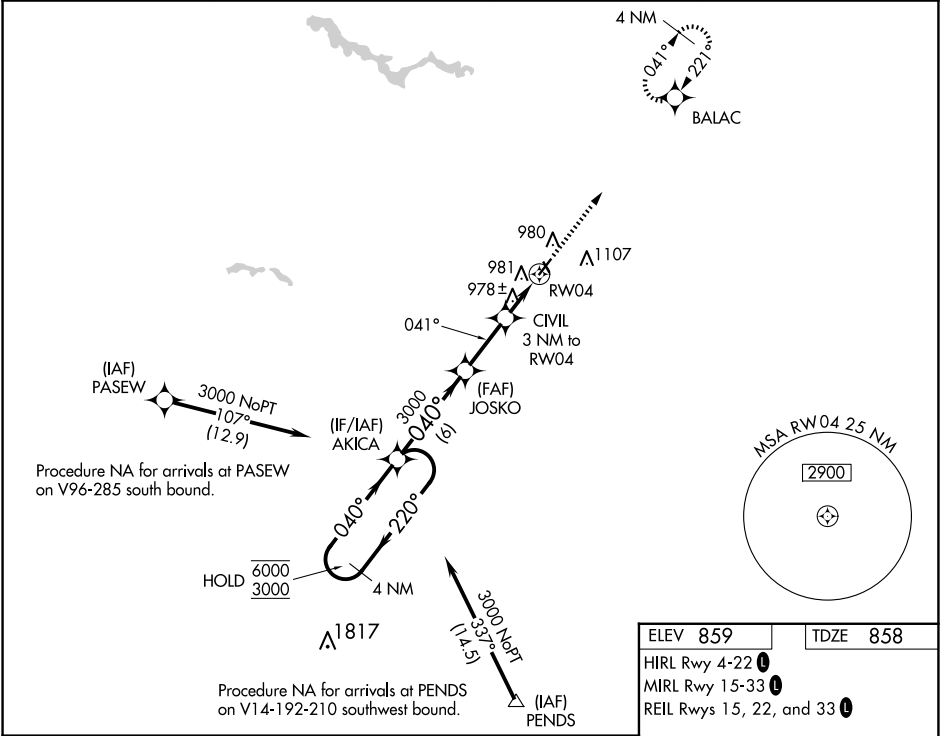


WAAS CH 60906 W04A	APP CRS 041°	Rwy Idg TDZE Apt Elev	6011 858 859
--	------------------------	-----------------------------	---

RNAV (GPS) RWY 4

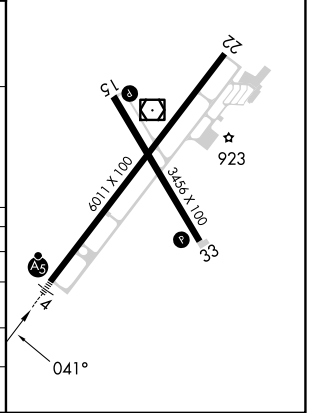
MARION MUNI - MCKINNEY FLD (MZZ)

RNP APCH - GPS.		MALSR	MISSED APPROACH: Climb to 3000 direct BALAC and hold.
<p>For uncompensated Baro-VNAV systems, LNAV/VNAV NA below -16°C or above 54°C. Circling to Rwy 15 NA at night.</p>			
AWOS-3 108.6	GRISSOM APP CON ★ 121.05 338.275	CLNC DEL 120.0	UNICOM 122.7 (CTAF) 0



ELEV 859	TDZE 858
HIRL Rwy 4-22 0	
MIRL Rwy 15-33 0	
REIL Rws 15, 22, and 33 0	

4 NM Holding Pattern		AKICA	JOSKO	CIVIL 3 NM to RW04	BALAC
		3000	1860	1 NM to RW04	
GP 3.00°	TCH 52	6 NM	3.6 NM	2 NM	1 NM
CATEGORY	A	B	C	D	
LPV DA	1058-1/2		200 (200-1/2)		
LNAV/VNAV DA	1247-5/8		389 (400-5/8)		
LNAV MDA	1240-1/2	382 (400-1/2)	1240-5/8	382 (400-5/8)	
CIRCLING	1300-1 441 (500-1)	1320-1 461 (500-1)	1420-1 1/2 561 (600-1 1/2)	1500-2 641 (700-2)	



EC-2, 20 FEB 2025 to 20 MAR 2025

EC-2, 20 FEB 2025 to 20 MAR 2025