

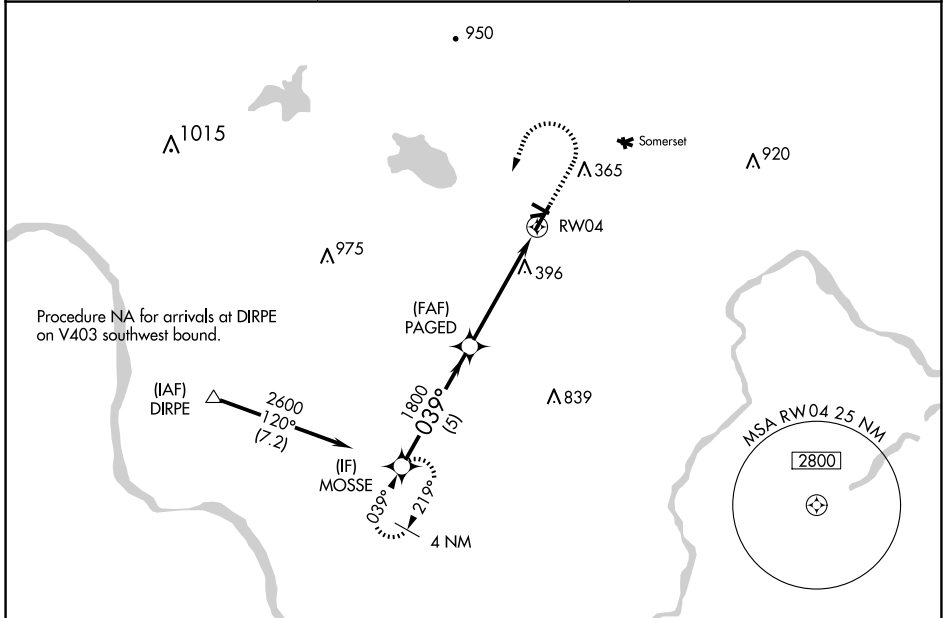
| | |
|------------------------|------------------------|
| APP CRS 039° | Rwy Idg 5054 |
| | TDZE 190 |
| | Apt Elev 190 |

RNAV (GPS) RWY 4

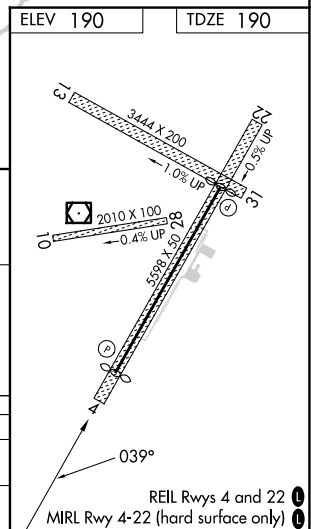
SOLBERG/HUNTERDON (N51)

| | |
|--|---|
| RNP APCH - GPS. | MISSED APPROACH: Climb to 1000 then climbing left turn to 2600 direct MOSSE and hold. |
| ⚠️ NA Circling NA to Rwy 10-28 and 13-31. Rwy 4 helicopter visibility reduction below 3/4 SM NA. Obtain local altimeter setting on CTAF, when not received, use Newark Liberty Intl altimeter setting and increase all MDAs 100 feet. VDP NA when using Newark Liberty Intl altimeter setting. | |

| | | |
|--------------------------------------|-----------------------|---------------------------------|
| NEWARK APP CON 132.8 379.9 | GCO 121.725 | UNICOM 122.8 (CTAF) 0 |
|--------------------------------------|-----------------------|---------------------------------|



| | | | |
|---|----------------------|----------------------|----|
| ELEV 190 | | TDZE 190 | |
| MOSSE 2600 039° PAGED 1800 1.4 NM to RWY04 RWY04 2600 MOSSE | | | |
| 5 NM | | 3.5 NM | |
| 1.4 NM | | 1.4 NM | |
| CATEGORY | A | B | C |
| LNAV MDA | 680-1 | 490 (500-1) | NA |
| CIRCLING | 680-1 490 (500-1) | 760-1 570 (600-1) | NA |



NE-2, 20 FEB 2025 to 20 MAR 2025

NE-2, 20 FEB 2025 to 20 MAR 2025