

WAAS CH <b>53411</b> <b>W10A</b>	APP CRS <b>103°</b>	Rwy Idg <b>5849</b> TDZE <b>901</b> Apt Elev <b>911</b>
----------------------------------------	------------------------	---------------------------------------------------------------

# RNAV (GPS) RWY 10

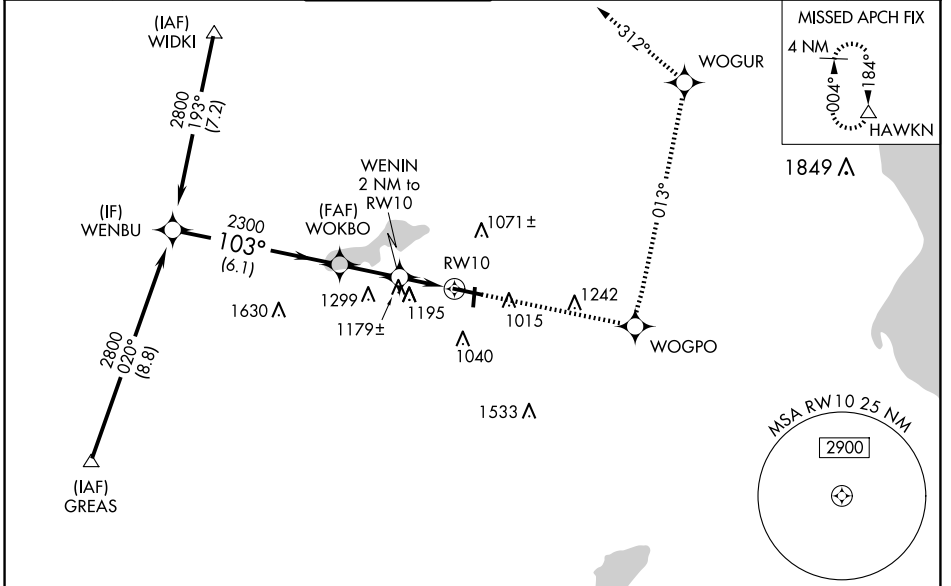
WAUKESHA COUNTY (U/S)

**Baro-VNAV NA** when using Lawrance J Timmerman altimeter setting. For uncompensated Baro-VNAV systems, LNAV/VNAV NA below -16°C (4°F) or above 54°C (130°F). DME/DME RNP-0.3 NA. When local altimeter setting not received, use Lawrance J Timmerman altimeter setting: increase LPV DA to 1147 feet, LNAV/VNAV DA to 1583 feet and all Cats visibility 1/4 SM; increase all MDAs 60 feet and Circling Cat C and D visibility 1/4 SM.

**MALSR**

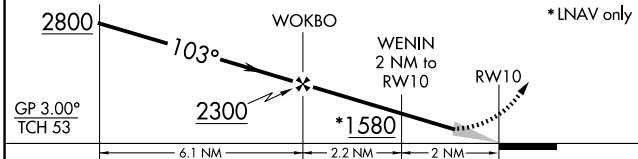
**MISSED APPROACH:** Climb to 3000 direct WOGPO and left turn on track 013° to WOGUR and track 312° to HAWKN and hold.

ATIS <b>118.875</b>	MILWAUKEE APP CON <b>125.35 307.0</b>	WAUKESHA TOWER ★ <b>123.7 (CTAF)</b>	GND CON <b>121.6</b>	CLNC DEL <b>121.6</b>	CLNC DEL <b>128.7</b> (When twr closed)	UNICOM <b>122.95</b>
------------------------	------------------------------------------	-----------------------------------------	-------------------------	--------------------------	-----------------------------------------------	-------------------------



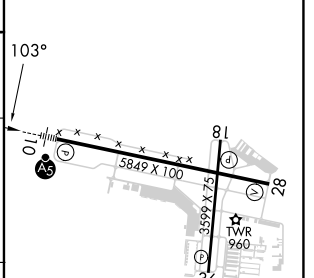
Procedure NA for arrivals at GREAS via V63 southwest bound.

Procedure Turn NA	3000	WOGPO	WOGUR	HAWKN
	↑	✦	tr 013°	✦



CATEGORY	A	B	C	D
LPV DA		1101-1/2	200 (200-1/2)	
LNAV/VNAV DA		1537-1 3/4	636 (700-1 3/4)	
LNAV MDA	1440-1/2	539 (600-1/2)	1440-1 539 (600-1)	1440-1 1/4 539 (600-1 1/4)
CIRCLING	1460-1 549 (600-1)	1500-1 589 (600-1)	1540-1 3/4 629 (700-1 3/4)	1640-2 1/4 729 (800-2 1/4)

ELEV 911	TDZE 901
----------	----------



HIRL Rwy 10-28	Ⓛ
MIRL Rwy 18-36	Ⓛ
REIL Rwy 28	Ⓛ
REIL Rwy 18 and 36	

EC-3, 20 FEB 2025 to 20 MAR 2025

EC-3, 20 FEB 2025 to 20 MAR 2025