

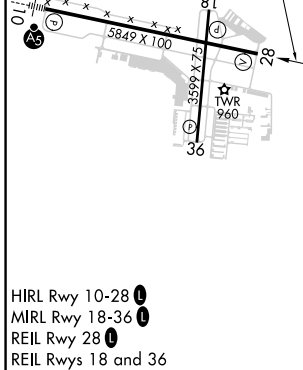
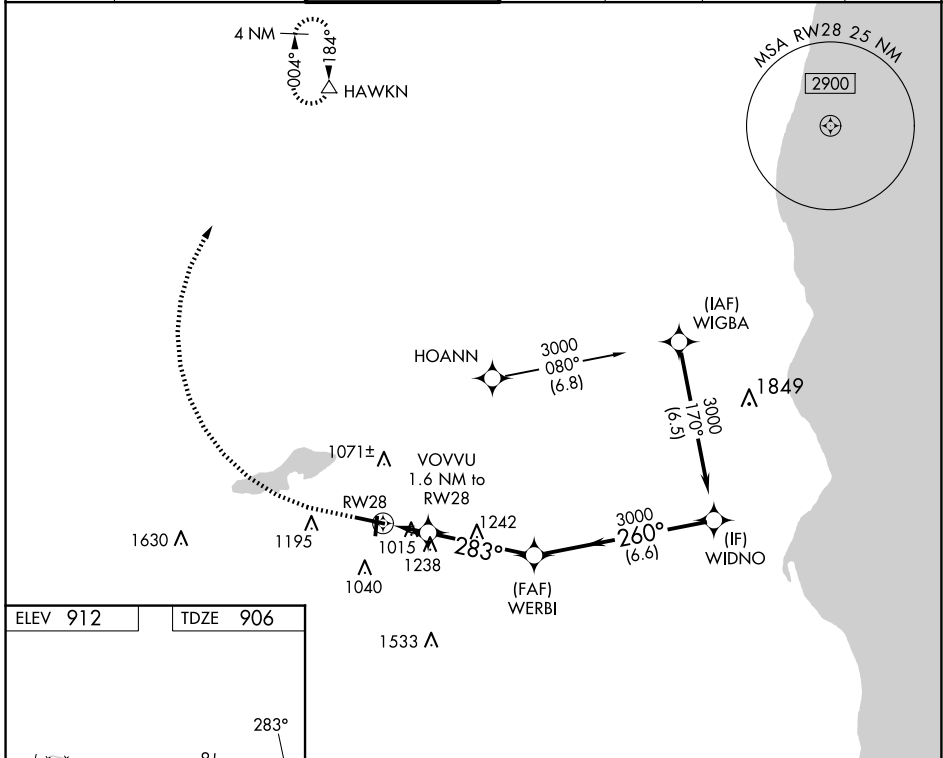
APP CRS	Rwy Idg	5849
283°	TDZE	906
	Apt Elev	912

RNAV (GPS) RWY 28

WAUKESHA COUNTY (U/S)

RNP APCH - GPS.		<p>⚠ Procedure NA at night. Rwy 28 helicopter visibility reduction below 1 SM NA. When local altimeter setting not received, use MWC altimeter setting and increase all MDAs 60 feet and LNAV visibility Cat C/D 1/8 SM, and Circling visibility Cat C/D 1/4 SM.</p>	<p>MISSED APPROACH: Climb to 1400 then climbing right turn to 3000 direct HAWKN and hold.</p>

ATIS 118.875	MILWAUKEE APP CON 125.35 307.0	WAUKESHA TOWER ★ 123.7 (CTAF) 0	GND CON 121.6	CLNC DEL 121.6	CLNC DEL 128.7 (When twr closed)	UNICOM 122.95
------------------------	--	---	-------------------------	--------------------------	---	-------------------------



1400	3000	HAWKN	VGSI and descent angles not coincident (VGSI Angle 3.75/TCH 37).	
		WERBI	VOVU 1.6 NM to RWY 28 $\leq 3.49^\circ$ TCH 45	
		WIDNO	260° 3000	
CATEGORY	A	B	C	D
LNAV MDA	1500-1	594 (600-1)	1500-1 $\frac{3}{4}$	594 (600-1 $\frac{1}{4}$)
CIRCLING	1500-1	588 (600-1)	1540-1 $\frac{3}{4}$ 628 (700-1 $\frac{3}{4}$)	1640-2 $\frac{1}{4}$ 728 (800-2 $\frac{1}{4}$)

EC-3, 20 FEB 2025 to 20 MAR 2025

EC-3, 20 FEB 2025 to 20 MAR 2025