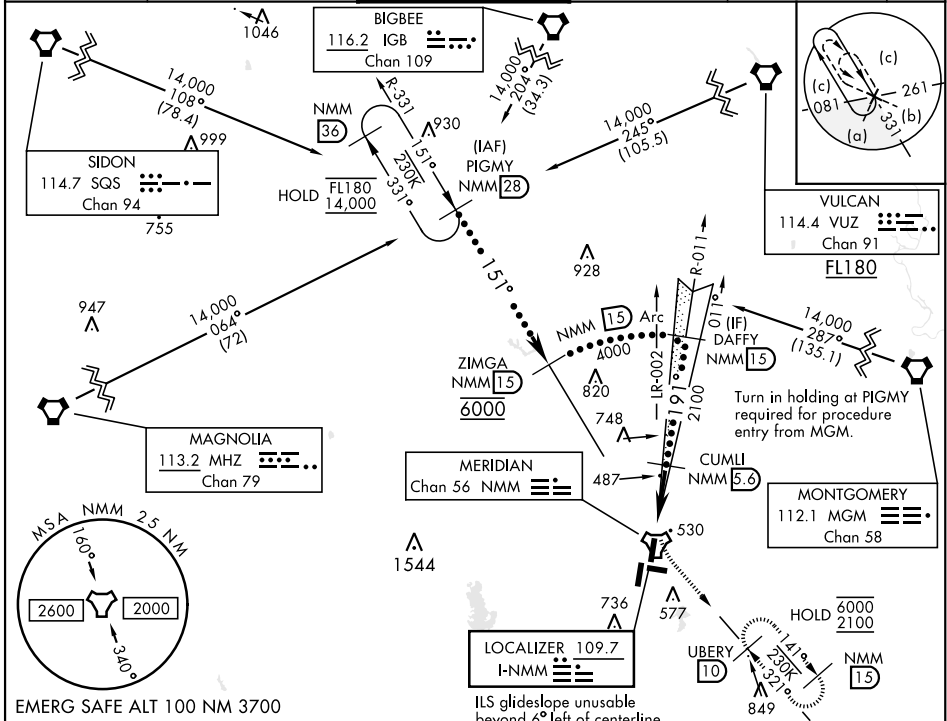


HI-ILS Z or LOC/DME Z RWY 19L

LOC I-NMM 109.7	APCH CRS 191°	Rwy ldg TDZE Arpt Elev 8000 316 316	AL-5079 [USN]	MERIDIAN NAS (MC CAIN FIELD) (KNMM)
---------------------------	-------------------------	---	---------------	-------------------------------------

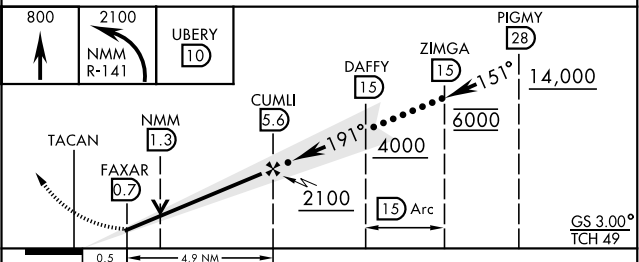
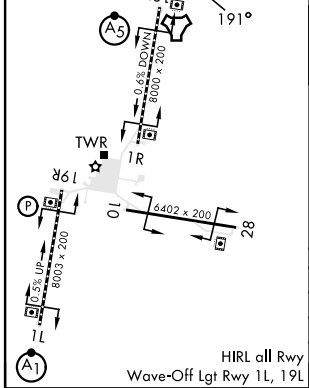
*When ALS inop, increase vis to ¾ mile.
 **When ALS inop, increase vis to 1 ¼ miles.

ATIS ★ 290.525	APP CON 120.95 276.4	NAVY MC CAIN TOWER ★ 126.2 340.2	GND CON 336.4	CLNC DEL 301.0	ASR/ PAR
--------------------------	--------------------------------	--	-------------------------	--------------------------	-------------



EMERG SAFE ALT 100 NM 3700

ELEV 316	TDZE 316
----------	----------



CATEGORY	C	D	E
S-ILS 19L *	516-½	200	(200-½)
S-LOC 19L**	740-¾	424	(500-¾)
CIRCLING	840-1½ 524 (600-1½)	880-2 564 (600-2)	1080-2¾ 764 (800-2¾)

MERIDIAN, MISSISSIPPI 32° 33' N - 88° 33' W MERIDIAN NAS (MC CAIN FIELD) (KNMM)

HI-ILS Z or LOC/DME Z RWY 19L

SC-4, 20 FEB 2025 to 20 MAR 2025

SC-4, 20 FEB 2025 to 20 MAR 2025

