

TACAN NMM Chan <b>56</b>	APCH CRS <b>181°</b>	Rwy ldg TDZE Arprt Elev <b>8000</b> <b>316</b> <b>316</b>
-----------------------------	-------------------------	--

AL-5079 [USN]

MERIDIAN NAS (MC CAIN FIELD) (KNMM)

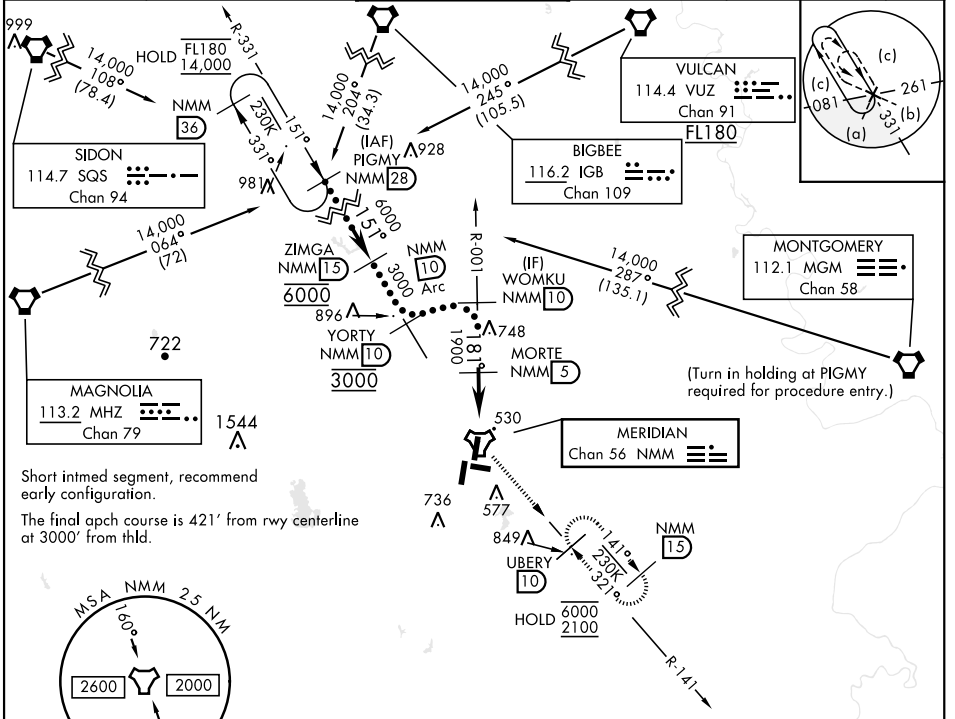
DME required.

MALSR

MISSED APPROACH: Climb to 2100 via NMM R-001 to TACAN then via R-141 to UBERY and hold.

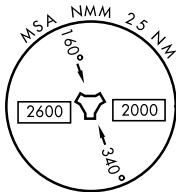
▼ \* When ALS inop, increase vis to 1 3/8 miles.

ATIS ★ <b>290.525</b>	APP CON <b>120.95 276.4</b>	NAVY MC CAIN TOWER ★ <b>126.2 340.2</b>	GND CON <b>336.4</b>	CLNC DEL <b>301.0</b>	ASR/ PAR
--------------------------	--------------------------------	--	-------------------------	--------------------------	-------------

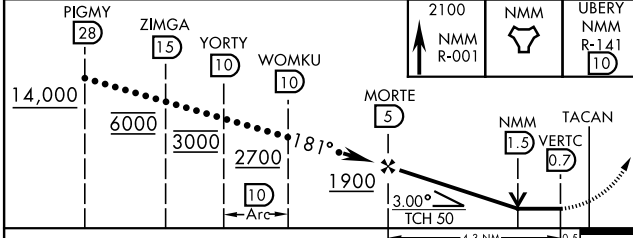


SC-4, 20 FEB 2025 TO 20 MAR 2025

SC-4, 20 FEB 2025 TO 20 MAR 2025



EMERG SAFE ALT 100 NM 3700



CATEGORY	C	D	E
S-19L *	780-1	464	(500-1)
CIRCLING	840-1 1/2 524 (600-1 1/2)	880-2 564 (600-2)	1080-2 3/4 764 (800-2 3/4)

