

TACAN NMM Chan 56	APCH CRS 025°	Rwy ldg TDZE 8003 254 Arprt Elev 316
--------------------------	----------------------	---

AL-5079 [USN]

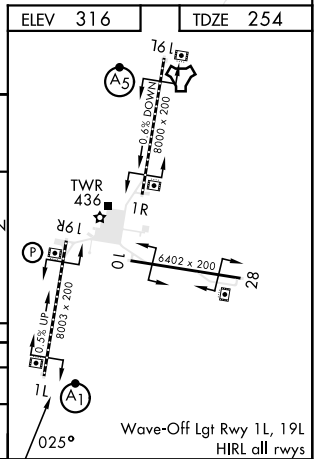
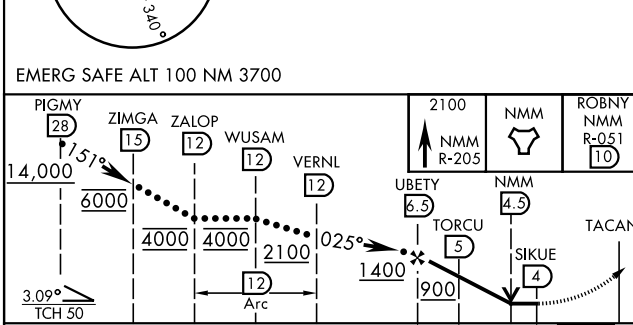
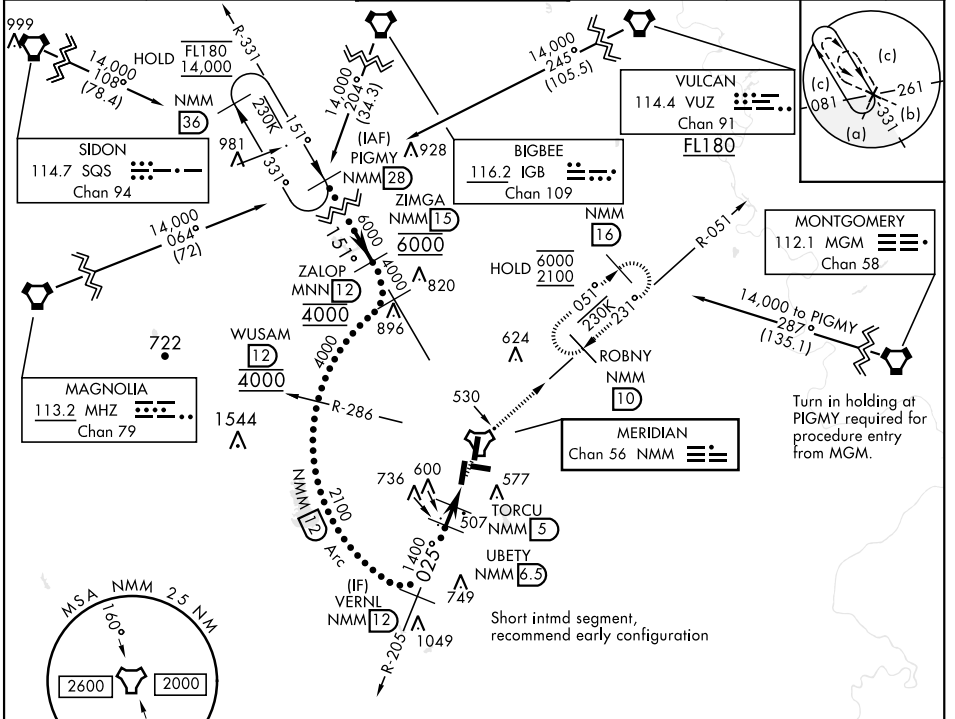
MERIDIAN NAS (MC CAIN FIELD) (KNMM)

ALSF-1

 MISSED APPROACH: Climb to 2100 via NMM R-205 to NMM TACAN then via R-051 to ROBNY and hold.

* When ALS inop, increase vis to 1 3/8 miles.

ATIS ★ 290.525	APP CON 120.95 276.4	NAVY MC CAIN TOWER ★ 126.2 340.2	GND CON 336.4	CLNC DEL 301.0	ASR/PAR
-----------------------	-----------------------------	---	----------------------	-----------------------	---------



CATEGORY	C	D	E
S-1L *	760-1	506 (500-1)	
CIRCLING	840-1 1/2 524 (600-1 1/2)	880-2 564 (600-2)	1080-2 3/4 764 (800-2 3/4)

SC-4, 20 FEB 2025 to 20 MAR 2025

SC-4, 20 FEB 2025 to 20 MAR 2025