

MERIDIAN, MISSISSIPPI

RNAV (GPS) RWY 1L

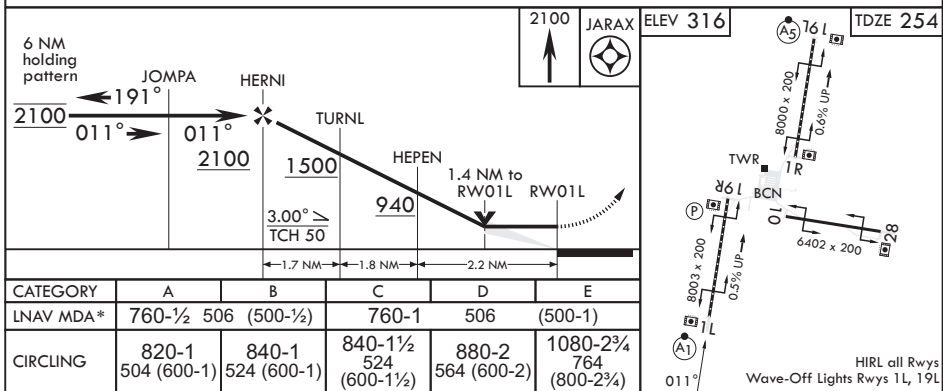
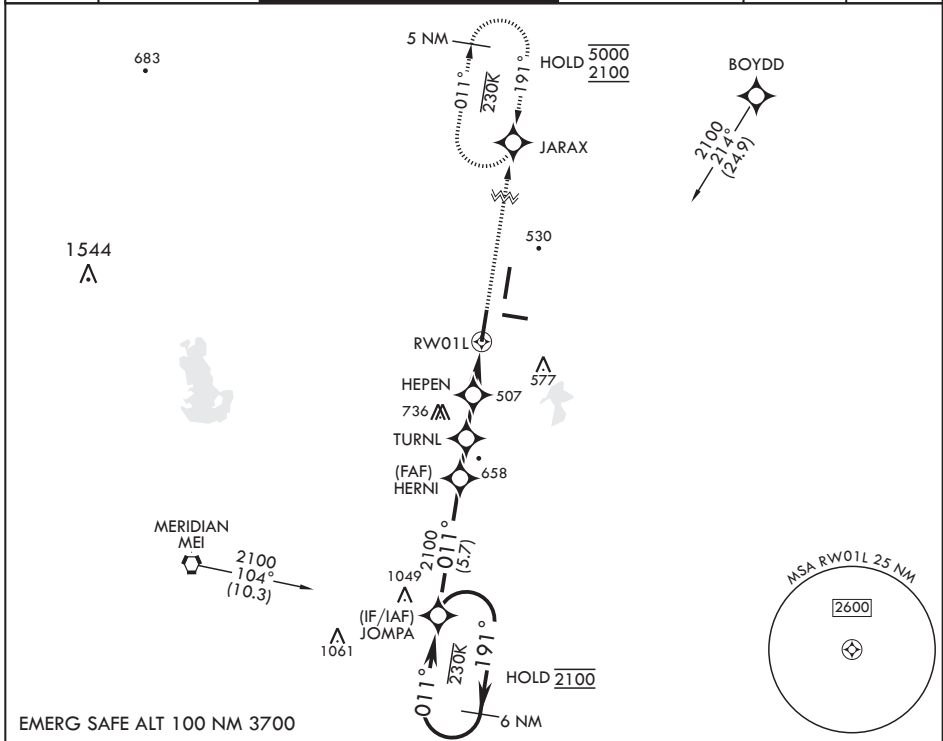
APCH CRS 011°	Rwy Idg TDZE Arprt Elev	8003 254 316
------------------	-------------------------------	--------------------

AL-5079 (USN)

MERIDIAN NAS (MC CAIN FLD) (KNMM)

RNP APCH.	ALSF-1	MISSED APPROACH: Climb to 2100 direct JARAX and hold.
<p>▼ * When ALS inop, increase CAT AB vis to 1 mile, CAT CDE to 1 3/8 miles.</p>		

ATIS * 290.525	APP CON 120.5 269.325 S 379.275 N 120.95 276.4 W 121.275 348.7 E	MC CAIN TOWER * 126.2 340.2 RWY 01L, 19L AND 28 126.2 360.2 RWY 01R, 19R AND 10	MC CAIN GND CON 336.4	CLNC DEL 301.0	ASR/PAR
-------------------	--	---	--------------------------	-------------------	---------



MERIDIAN, MISSISSIPPI

32°33'N - 88°33'W

MERIDIAN NAS (MC CAIN FLD) (KNMM)

Amdt 4 08SEP22

RNAV (GPS) RWY 1L

SC-4, 20 FEB 2025 to 20 MAR 2025

SC-4, 20 FEB 2025 to 20 MAR 2025