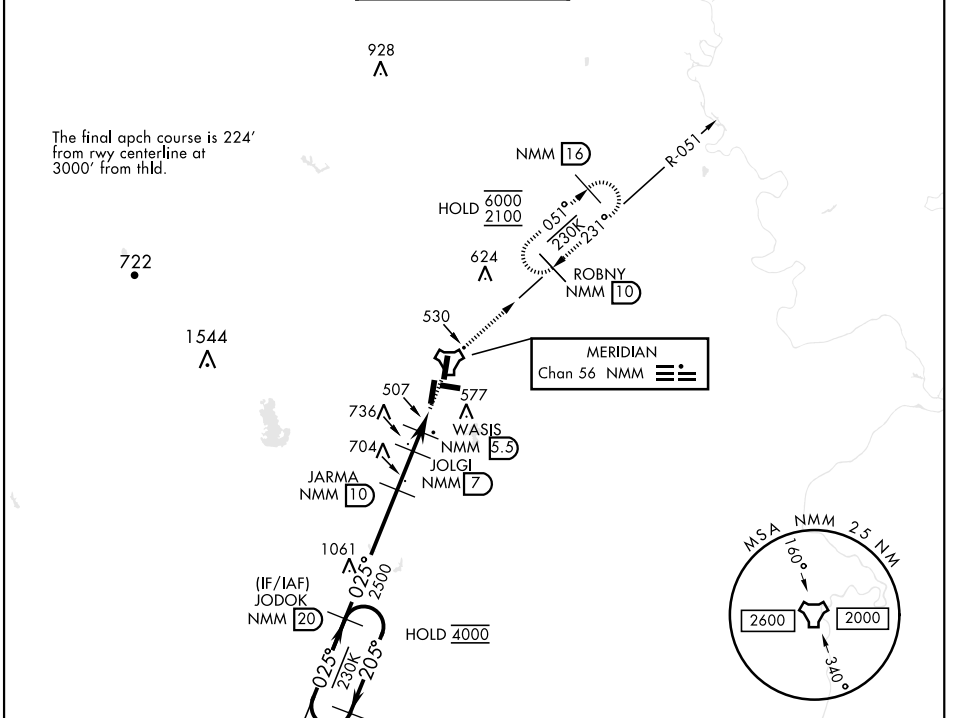


MERIDIAN, MISSISSIPPI

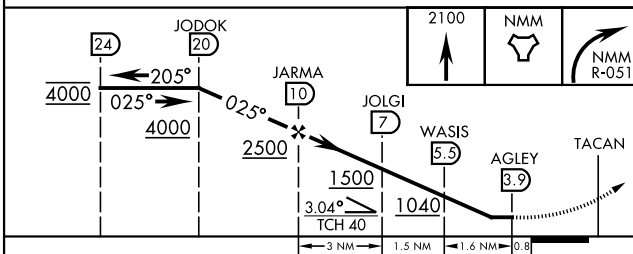
# TACAN Y RWY 1L

TACAN NMM Chan <b>56</b>	APCH CRS <b>025°</b>	Rwy Idg <b>8003</b> TDZE <b>254</b> Arprt Elev <b>316</b>	AL-5079 [USN]	MERIDIAN NAS (MC CAIN FIELD) (KNMM)
RADAR required.			ALSIF-1	MISSED APPROACH: Climb to 2100 direct NMM TACAN then via R-051 to ROBNY and hold.
▼ * When ALS inop, increase CAT AB vis to 1 mile; CAT CDE vis to 1 1/8 miles.				

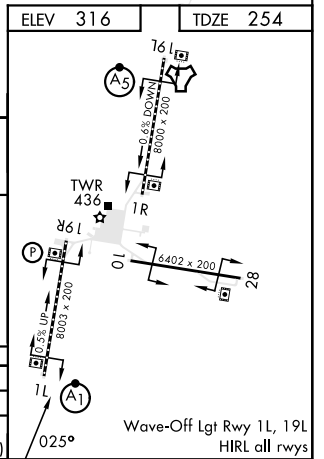
ATIS ★ <b>290.525</b>	APP CON <b>120.95 276.4</b>	NAVY MC CAIN TOWER ★ <b>126.2 340.2</b>	GND CON <b>336.4</b>	CLNC DEL <b>301.0</b>	ASR/PAR
-----------------------	-----------------------------	-----------------------------------------	----------------------	-----------------------	---------



EMERG SAFE ALT 100 NM 3700



CATEGORY	A	B	C	D	E
S-1L *	760-1/2	506 (500-1/2)	760-1	506 (500-1)	
CIRCLING	820-1 504 (600-1)	840-1 524 (600-1)	840-1 1/2 524 (600-1 1/2)	880-2 564 (600-2)	1080-2 3/4 764 (800-2 3/4)



MERIDIAN, MISSISSIPPI 32°33' N -88°33' W MERIDIAN NAS (MC CAIN FIELD) (KNMM)

Amtd 3 08SEP22

# TACAN Y RWY 1L

SC-4, 20 FEB 2025 to 20 MAR 2025

SC-4, 20 FEB 2025 to 20 MAR 2025

Wave-Off Lgt Rwy 1L, 19L  
HIRL all rwy's