

RNAV (GPS) RWY 12

SOMERSET (SMQ)

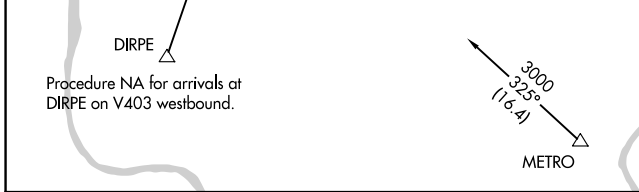
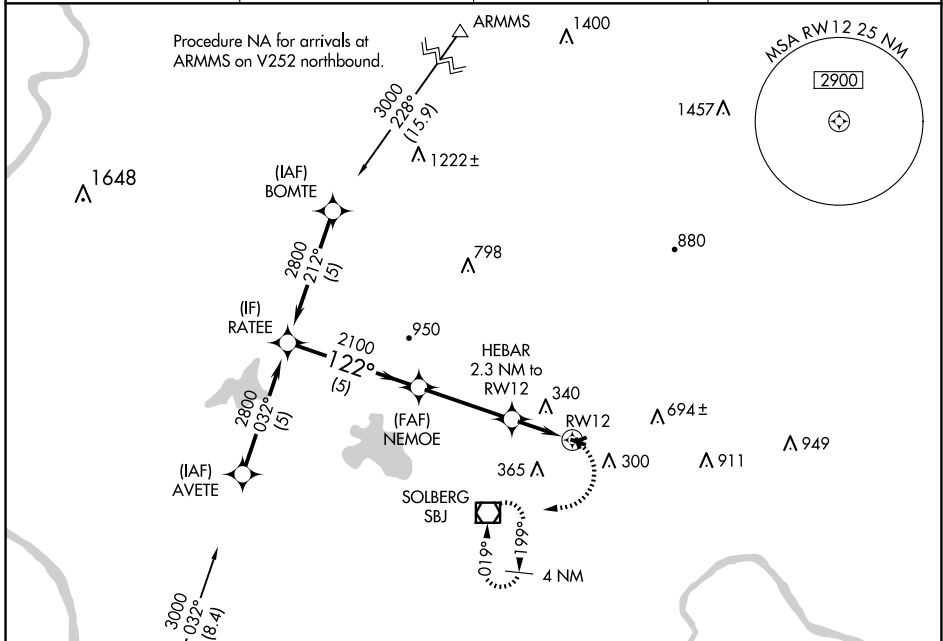
APP CRS 122°	Rwy Idg TDZE Apt Elev	2739 104 106
------------------------	-----------------------------	---

RNP APCH - GPS

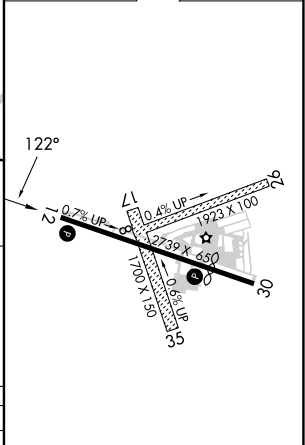
▼ Rwy 12 helicopter visibility reduction below ¼ SM NA.
▲ Circling Rwy 8, 17, 26, 30 and 35 NA at night.

MISSED APPROACH: Climbing right turn to 2500 direct SBJ VOR/DME and hold, continue climb-in-hold to 2500.

ASOS 120.6	NEWARK APP CON 132.8 379.9	UNICOM 123.0 (CTAF)	118.325 0
----------------------	--------------------------------------	-------------------------------	-------------------------



ELEV 106	TDZE 104
----------	----------



	RATEE 2800		NEMOE 2100		HEBAR 2.3 NM to RW12		RW12 900	
CATEGORY	A		B		C		D	
LNAV MDA	640-1		536 (600-1)		NA		NA	
C CIRCLING	640-1 534 (600-1)		960-1¼ 854 (900-1¼)		NA		NA	

REIL Rwy 12 and 30 **0**
MIRL Rwy 12-30 **0**

NE-2, 20 FEB 2025 to 20 MAR 2025

NE-2, 20 FEB 2025 to 20 MAR 2025