

LOC I-FHU	APP CRS	Rwy Idg	<b>12001</b>
<b>109.9</b>	<b>260°</b>	TDZE	<b>4629</b>
		Apt Elev	<b>4719</b>

# ILS or LOC RWY 26

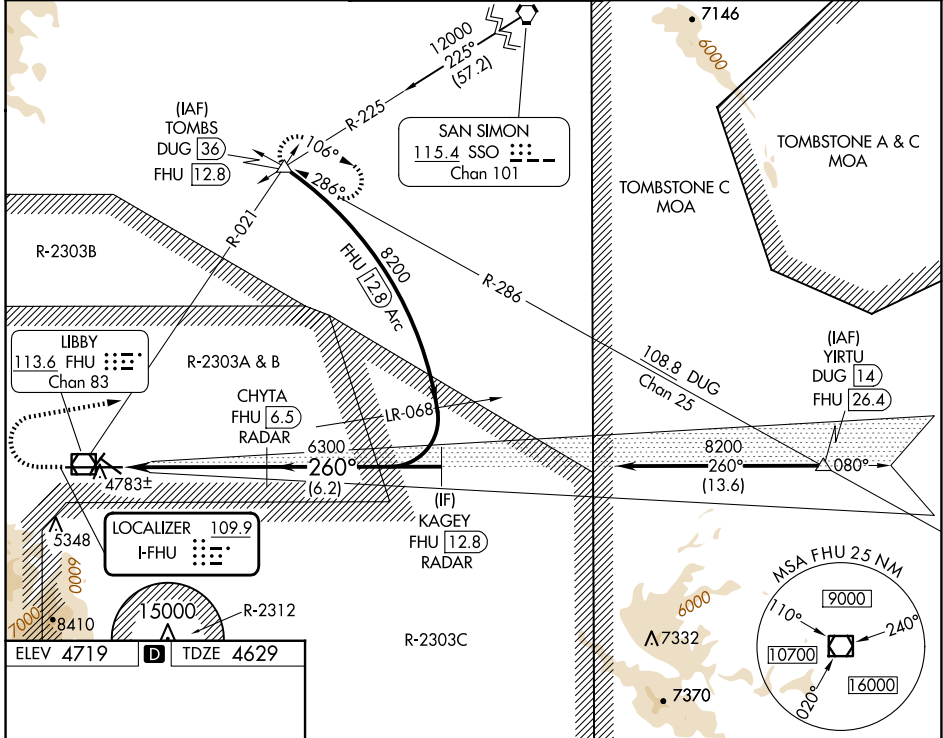
SIERRA VISTA MUNI-LIBBY AAF (FHU)

DME or RADAR required.

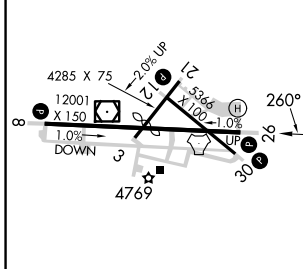
**⚠** Circling NA south of Rwy 8 and 30.

MISSED APPROACH: Climb to 5300 then climbing right turn to 9500 on heading 067° and FHU VOR/DME R-021 to TOMBS INT/DUG 36 DME and hold, continue climb-in-hold to 9500.

ATIS	LIBBY AAF GCA*	LIBBY TOWER*	GND CON	UNICOM
<b>134.75 263.025</b>	<b>127.05 254.25</b>	<b>124.95 (CTAF) 0 284.75</b>	<b>121.7 268.7</b>	<b>122.95</b>



ELEV 4719	<b>D</b>	TDZE 4629
-----------	----------	-----------



5300	9500	TOMBS	VGSI and ILS glidepath not coincident (VGSI Angle 3.00/TCH 80).
↑	hdg 067°	FHU R-021	KAGEY FHU [12.8] RADAR
			CHYTA FHU [6.5] RADAR
			FHU [1.4]
			GS 3.00° TCH 49
			5.2 NM      6.2 NM

HIRL Rwy 8-26	
MIRL Rwy 3-21 and 12-30	
FAF to MAP 5.2 NM	
Knots	60    90    120    150    180
Min:Sec	5:12   3:28   2:36   2:05   1:44
CATEGORY	A      B      C      D
S-ILS 26	4829-¾    200 (200-¾)
S-LOC 26	5020-1    391 (400-1)      5020-1¼    391 (400-1¼)
CIRCLING	5160-1    5180-1    5180-1½    5280-2
	441 (500-1)    461 (500-1)    461 (500-1½)    561 (600-2)

SW-4, 20 FEB 2025 to 20 MAR 2025

SW-4, 20 FEB 2025 to 20 MAR 2025