

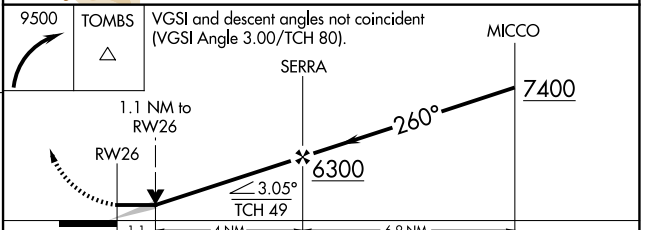
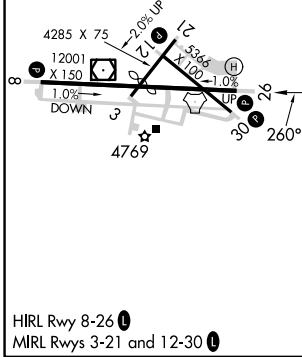
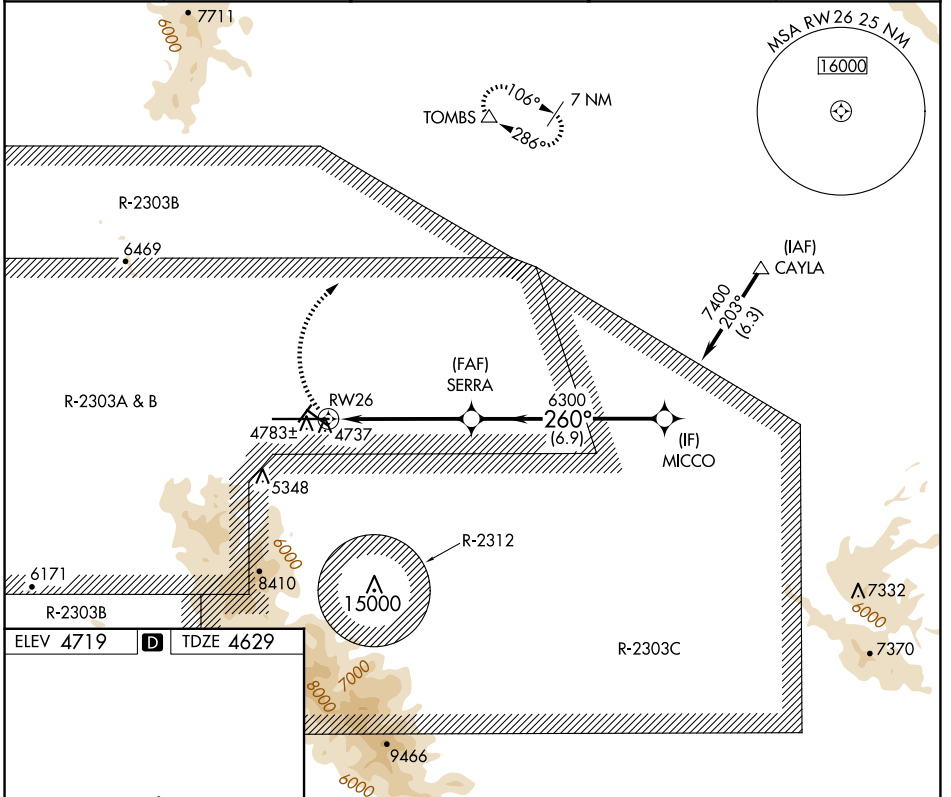
APP CRS	Rwy Idg	<b>12001</b>
<b>260°</b>	TDZE	<b>4629</b>
	Apt Elev	<b>4719</b>

# RNAV (GPS) RWY 26

SIERRA VISTA MUNI-LIBBY AAF (FHU)

RNP APCH - GPS.		MISSED APPROACH: Climbing right turn to 9500 direct TOMBS and hold, continue climb-in-hold to 9500.	
Circling NA south of runways 8 and 30.			

ATIS	LIBBY AAF GCA*	LIBBY TOWER*	GND CON	UNICOM
<b>134.75 263.025</b>	<b>127.05 254.25</b>	<b>124.95 (CTAF) 284.75</b>	<b>121.7 268.7</b>	<b>122.95</b>



CATEGORY	A	B	C	D
LNAV MDA	5040-1	411 (400-1)	5040-1¼	411 (400-1¼)
CIRCLING	5160-1 441 (500-1)	5180-1 461 (500-1)	5180-1½ 461 (500-1½)	5280-2 561 (600-2)

SW-4, 20 FEB 2025 to 20 MAR 2025

SW-4, 20 FEB 2025 to 20 MAR 2025