

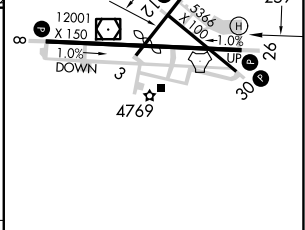
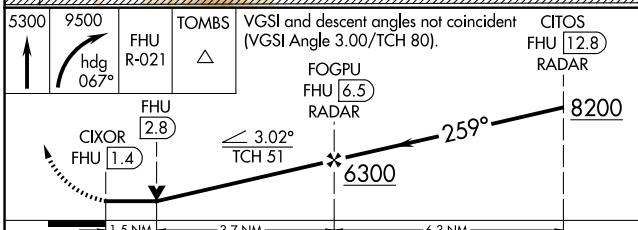
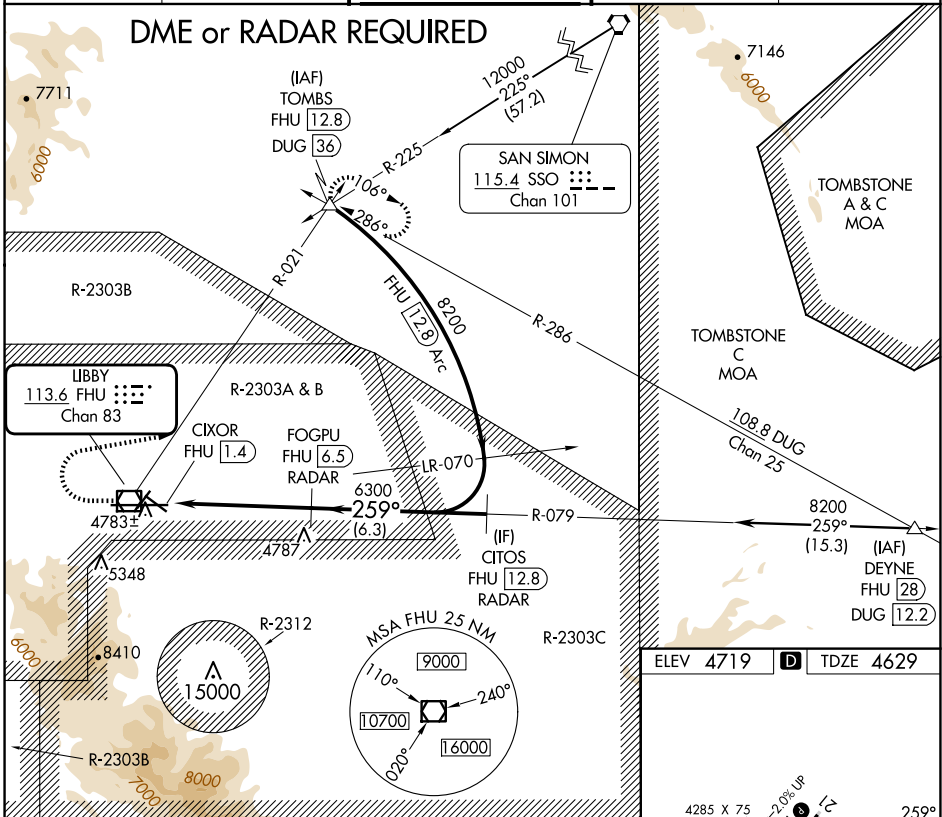
VOR/DME FHU <b>113.6</b> Chan <b>83</b>	APP CRS <b>259°</b>	Rwy Idg <b>12001</b> TDZE <b>4629</b> Apt Elev <b>4719</b>
---	------------------------	--

# VOR RWY 26

SIERRA VISTA MUNI-LIBBY AAF (FHU)

	Circling NA south of Rws 8 and 30. DME or RADAR required.	MISSED APPROACH: Climb to 5300 then climbing right turn to 9500 on heading 067° and FHU R-021 to TOMBS INT/ DUG 36 DME and hold, continue climb-in-hold to 9500.
--	--	--

ATIS <b>134.75 263.025</b>	LIBBY AAF GCA* <b>127.05 254.25</b>	LIBBY TOWER* <b>124.95 (CTAF) 284.75</b>	GND CON <b>121.7 268.7</b>	UNICOM <b>122.95</b>
-------------------------------	--	---	-------------------------------	-------------------------



CATEGORY	A	B	C	D
S-26	5140-1	511 (500-1)	5140-1½	511 (500-1½)
CIRCLING	5160-1 441 (500-1)	5180-1 461 (500-1)	5180-1⅝ 461 (500-1⅝)	5280-2 561 (600-2)

HIRL Rwy 8-26  
MIRL Rws 3-21 and 12-30

FAF to MAP 5.1 NM

Knots	60	90	120	150	180
Min:Sec	5:06	3:24	2:33	2:02	1:42

SW-4, 20 FEB 2025 to 20 MAR 2025

SW-4, 20 FEB 2025 to 20 MAR 2025