

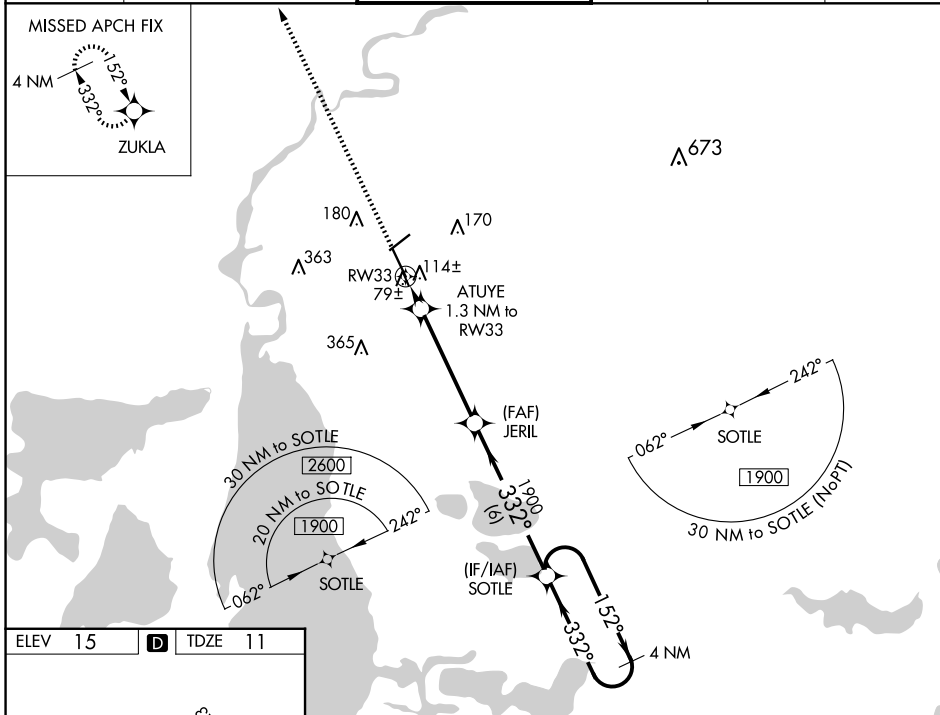
WAAS CH <b>56215</b> <b>W33A</b>	APP CRS <b>332°</b>	Rwy Idg TDZE Apt Elev	<b>6500</b> <b>11</b> <b>15</b>
--	------------------------	-----------------------------	---------------------------------------

# RNAV (GPS) RWY 33

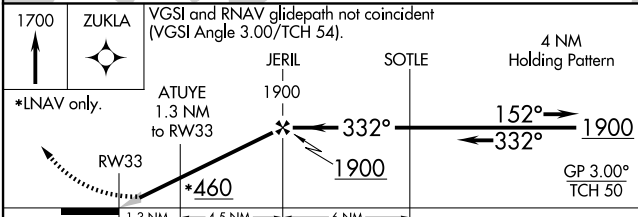
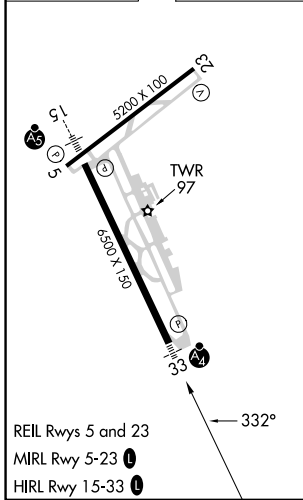
LAKE CHARLES RGNL (LCH)

RNP APCH.	MALSF	MISSED APPROACH: Climb to 1700 direct ZUKLA and hold.
⚠ For uncompensated Baro-VNAV systems, LNAV/VNAV NA below -3°C (27°F) or above 43°C (109°F). For inop MALSF, increase LNAV/VNAV all Cats visibility to 7/6 and LNAV all Cats visibility to 1 mile.		

ATIS <b>118.75</b>	LAKE CHARLES APP CON* <b>119.35 353.75</b>	LAKE CHARLES TOWER* <b>120.7 (CTAF) 257.8</b>	GND CON <b>121.8</b>	CLNC DEL <b>126.25</b>	UNICOM <b>122.95</b>
-----------------------	---	--	-------------------------	---------------------------	-------------------------



ELEV 15	<b>D</b>	TDZE 11
---------	----------	---------



CATEGORY	A	B	C	D
LPV DA		211-3/4	200 (200-3/4)	
LNAV/VNAV DA		296-3/4	285 (300-3/4)	
LNAV MDA		380-3/4	369 (400-3/4)	
<b>C</b> CIRCLING	440-1 425 (500-1)	480-1 465 (500-1)	580-1 1/2 565 (600-1 1/2)	680-2 1/4 665 (700-2 1/4)

SC-4, 20 FEB 2025 to 20 MAR 2025

SC-4, 20 FEB 2025 to 20 MAR 2025