

DUBLIN, VIRGINIA

AL-5084 (FAA)

23166

LOC I-PSK 110.9	APP CRS 058°	Rwy Idg TDZE Apt Elev	6201 2105 2105
---------------------------	------------------------	-----------------------------	---

ILS or LOC Y RWY 6

NEW RIVER VALLEY (PSK)

DME required.

NA Circling NA for Cat D northwest of Rwy 6-24. Inop table does not apply to S-ILS 6 all Cats and S-LOC 6 Cats A and B. For inop ALS, increase S-LOC 6 Cat C/D visibility to 1 3/8 SM.



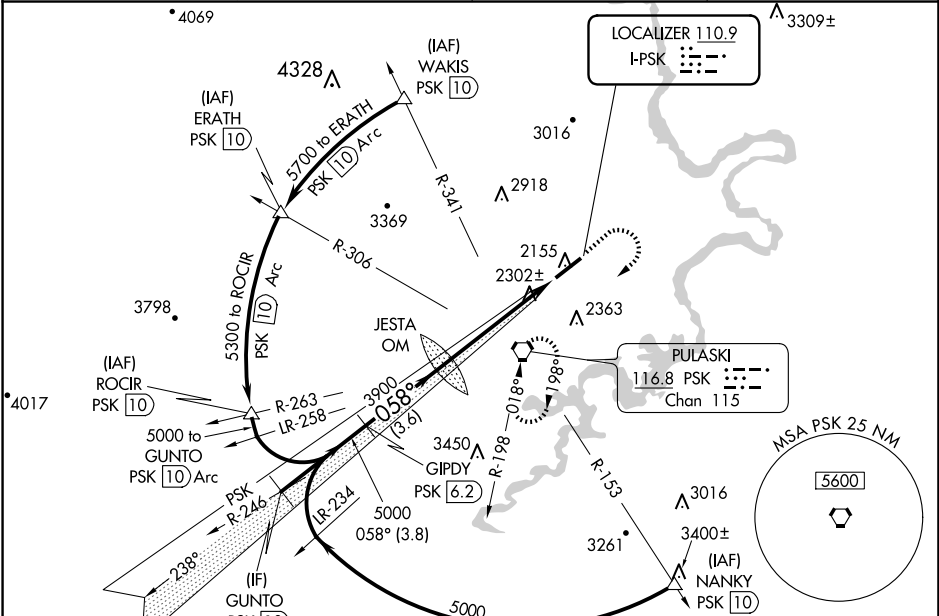
MISSED APPROACH: Climb to 3000 then climbing right turn to 5000 direct PSK VORTAC and hold, continue climb-in-hold to 5000.

AWOS-3
127.375

ROANOKE APP CON
126.0 339.8

ROANOKE CLNC DEL
121.7

UNICOM
122.7 (CTAF)



NE-3, 20 FEB 2025 to 20 MAR 2025

NE-3, 20 FEB 2025 to 20 MAR 2025

ELEV 2105	TDZE 2105
-----------	-----------



GS 3.00° TCH 58	5000	5000	3900	3823
	3.8 NM	3.6 NM	5.1 NM	

2174±	2113±	2166±	2268
HIRL Rwy 6-24			
REIL Rwy 24			
FAF to MAP 5.1 NM			
Knots	60	90	120 150 180
Min:Sec	5:06	3:24	2:33 2:02 1:42

CATEGORY	A	B	C	D
S-ILS 6		2305-1	200 (200-1)	
S-LOC 6		2560-1	455 (500-1)	
CIRCLING	2620-1 515 (600-1)	2680-1 575 (600-1)	2780-2 675 (700-2)	2780-2 1/4 675 (700-2 1/4)

DUBLIN, VIRGINIA

37°08'N-80°41'W

Orig-B 25FEB21

NEW RIVER VALLEY (PSK)

ILS or LOC Y RWY 6