

DUBLIN, VIRGINIA

AL-5084 (FAA)

24305

LOC I-PSK <b>110.9</b>	APP CRS <b>058°</b>	Rwy Idg TDZE Apt Elev <b>6201</b> <b>2105</b> <b>2105</b>
---------------------------	------------------------	--

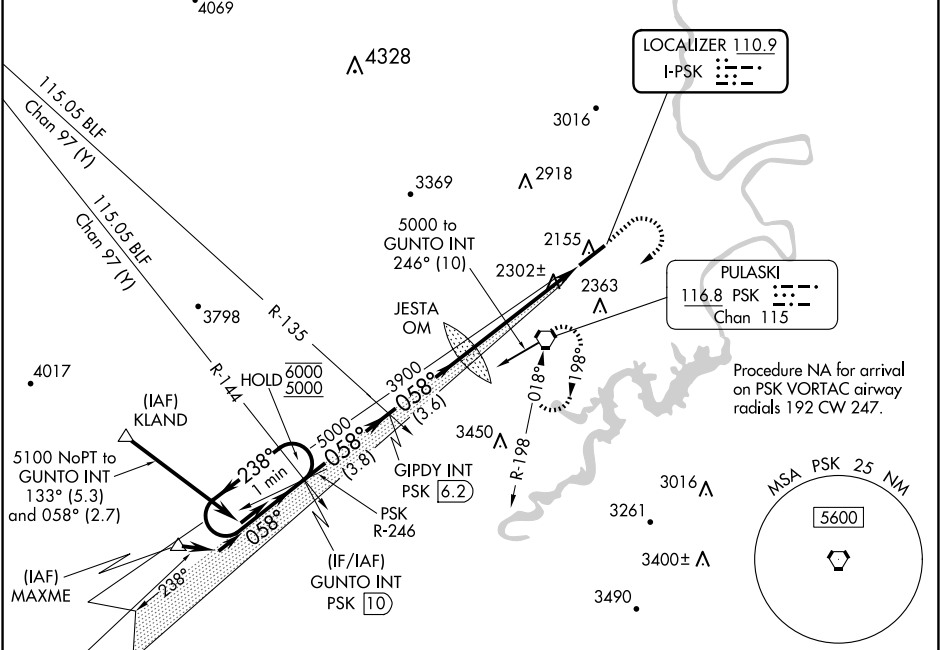
# ILS or LOC Z RWY 6

## NEW RIVER VALLEY (PSK)

**NA** Inop table does not apply to S-ILS 6 all Cats and S-LOC 6 Cats A and B. For inop ALS, increase S-LOC 6 Cat C/D visibility to 1 3/8 SM. Circling NA for Cat D northwest of Rwy 6-24.

**MALSRL** MISSED APPROACH: Climb to 3000 then climbing right turn to 5000 direct PSK VORTAC and hold, continue climb-in-hold to 5000.

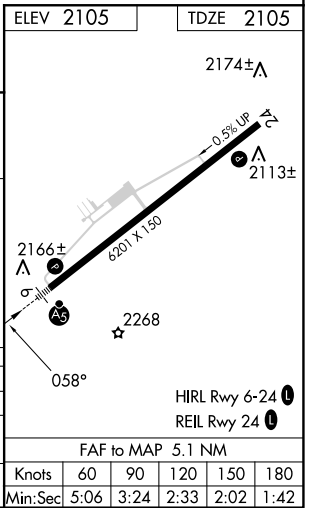
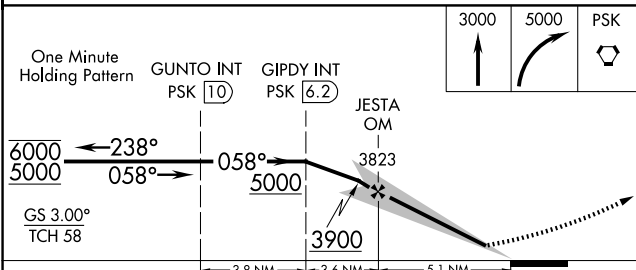
AWOS-3 <b>127.375</b>	ROANOKE APP CON <b>126.0 339.8</b>	ROANOKE CLNC DEL <b>121.7</b>	UNICOM <b>122.7 (CTAF)</b>
--------------------------	---------------------------------------	----------------------------------	-------------------------------



NE-3, 20 FEB 2025 to 20 MAR 2025

NE-3, 20 FEB 2025 to 20 MAR 2025

ELEV 2105	TDZE 2105
-----------	-----------



CATEGORY	FAF to MAP 5.1 NM				Knots				
	A	B	C	D	60	90	120	150	180
S-ILS 6		2305-1	200 (200-1)		5:06	3:24	2:33	2:02	1:42
S-LOC 6		2560-1	455 (500-1)						
CIRCLING	2620-1 515 (600-1)	2680-1 575 (600-1)	2780-2 675 (700-2)	2780-2 1/4 675 (700-2 1/4)					

DUBLIN, VIRGINIA  
Amdt 5B 25FEB21

37°08'N-80°41'W

# NEW RIVER VALLEY (PSK)

## ILS or LOC Z RWY 6