

WAAS CH 86227 W24A	APP CRS 238°	Rwy ldg TDZE Apt Elev	6201 2087 2105
--	------------------------	-----------------------------	---

RNAV (GPS) RWY 24

NEW RIVER VALLEY (PSK)

RNP APCH - GPS.

⚠ Circling NA for Cat D northwest of Rwy 6-24. For uncompensated Baro-VNAV systems, LNAV/VNAV NA below -19°C or above 54°C. Rwy 24 helicopter visibility reduction below 3/4 SM NA. Baro-VNAV and VDP NA when using BCB altimeter setting.

MISSED APPROACH: Climb to 5500 direct GUNTO and hold, continue climb-in-hold.

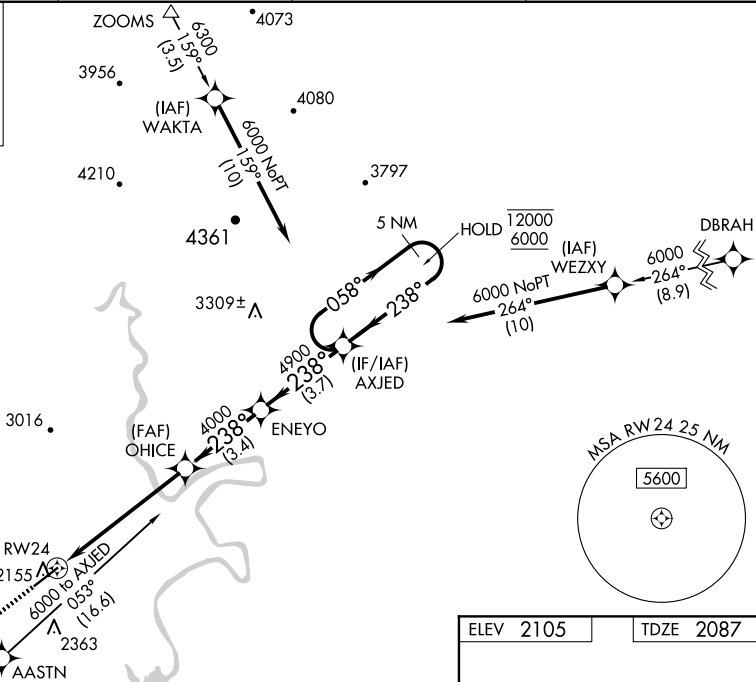
AWOS-3
127.375

ROANOKE APP CON
126.0 339.8

ROANOKE CLNC DEL
121.7

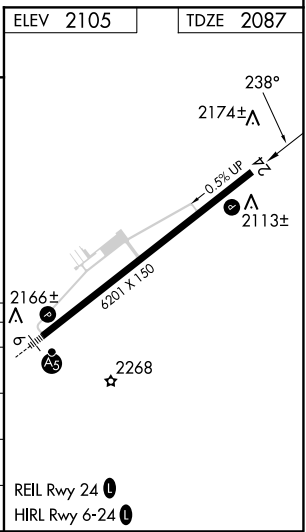
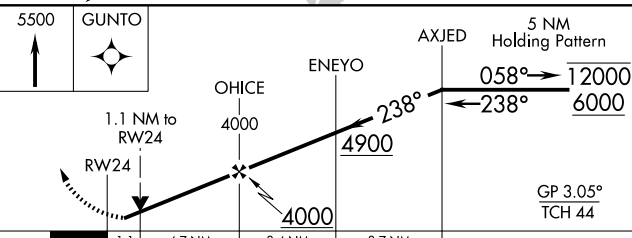
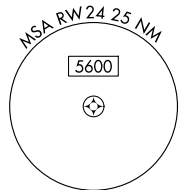
UNICOM
122.7 (CTAF) 0

MISSED APCH FIX



NE-3, 20 FEB 2025 to 20 MAR 2025

NE-3, 20 FEB 2025 to 20 MAR 2025



CATEGORY	A	B	C	D
LPV DA	2337-1		250 (300-1)	
LNAV/VNAV DA	2502-1½		415 (400-1½)	
LNAV MDA	2480-1	393 (400-1)	2480-1½	393 (400-1½)
CIRCLING	2640-1 535 (600-1)	2680-1 575 (600-1)	2780-2 675 (700-2)	2780-2¼ 675 (700-2¼)