

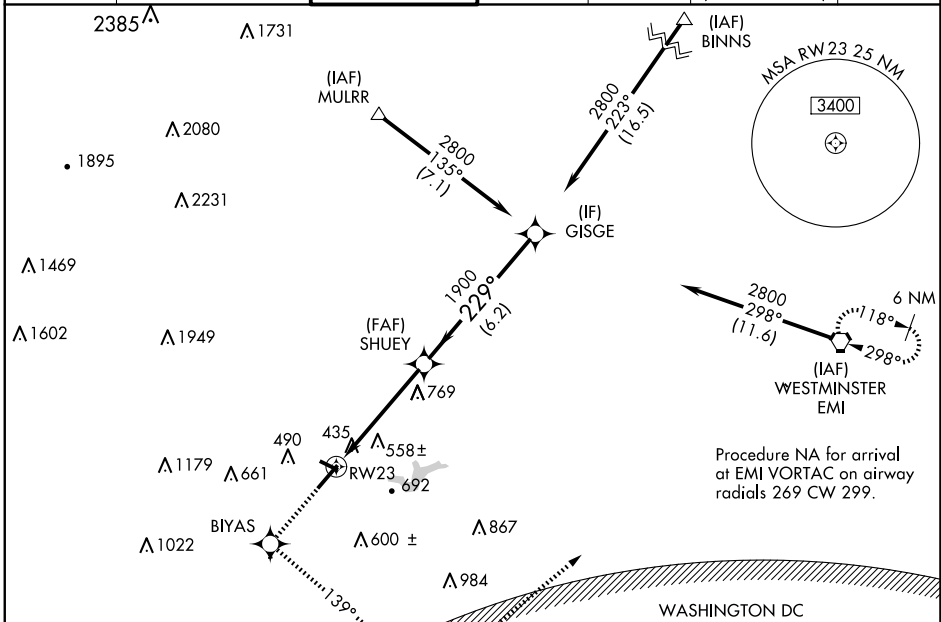
WAAS CH 81802 W23A	APP CRS 229°	Rwy Idg TDZE 296 Apt Elev 306	5819
--	------------------------	---	-------------

RNAV (GPS) Z RWY 23

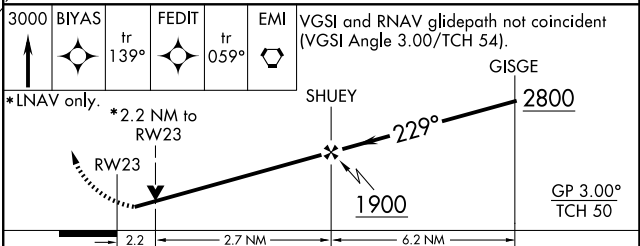
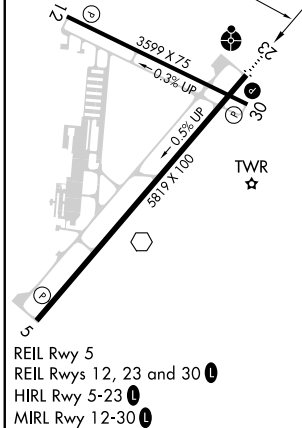
FREDERICK MUNI (FDK)

RNP APCH.	<p>⚠ Rwy 23 helicopter visibility reduction below 3/4 SM NA. Circling Rwy 30 NA at night. For uncompensated Baro-VNAV systems, LNAV/VNAV NA below -15°C or above 54°C. Inop table does not apply to LPV, LNAV/VNAV all Cats, and LNAV Cat C.</p>	ODALS 	MISSED APPROACH: Climb to 3000 direct BIYAS WP and via 139° track to FEDIT WP and via 059° track to EMI VORTAC and hold.
-----------	---	-----------	--

ATIS 124.875	POTOMAC APP CON 126.1 338.25	FREDERICK TOWER ★ 132.4 (CTAF) 0	GND CON 127.425	CLNC DEL 127.425	CLNC DEL 126.9 (When twr closed)	UNICOM 122.95
------------------------	--	--	---------------------------	----------------------------	---	-------------------------



ELEV 306	TDZE 296
----------	----------



CATEGORY	A	B	C	D
LPV DA	690-1½ 394 (400-1½)			
LNAV/VNAV DA	1020-2½ 724 (800-2½)			
LNAV MDA	1020-¾ 724 (800-¾)	1020-2 724 (800-2)	1020-2¼ 724 (800-2¼)	1020-2½ 724 (800-2½)
<input checked="" type="checkbox"/> CIRCLING	1020-1 714 (800-1)	1100-2¼ 794 (800-2¼)	1200-2¾ 894 (900-2¾)	

NE-3, 20 FEB 2025 to 20 MAR 2025

NE-3, 20 FEB 2025 to 20 MAR 2025