

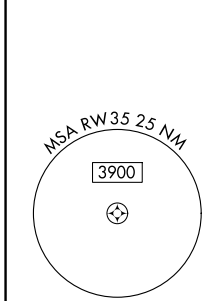
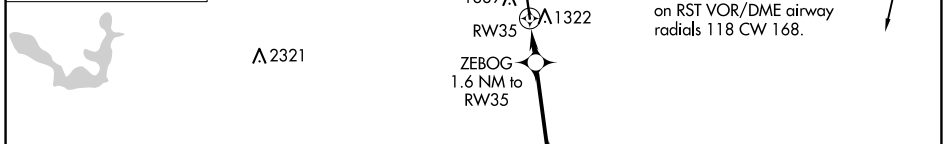
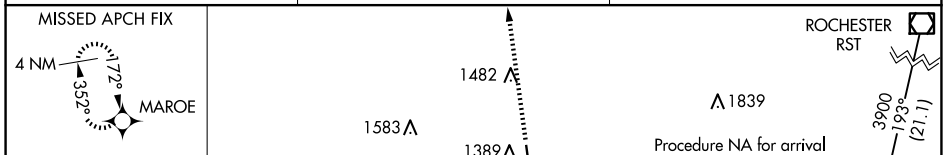
WAAS CH <b>99506</b> <b>W35A</b>	APP CRS <b>352°</b>	Rwy Idg TDZE <b>1231</b> Apt Elev <b>1234</b>	<b>5800</b>
--	------------------------	---	-------------

# RNAV (GPS) RWY 35

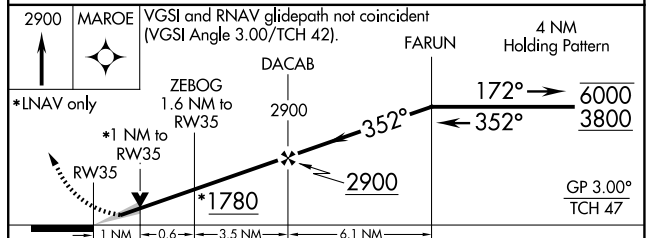
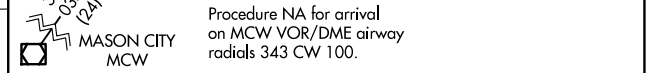
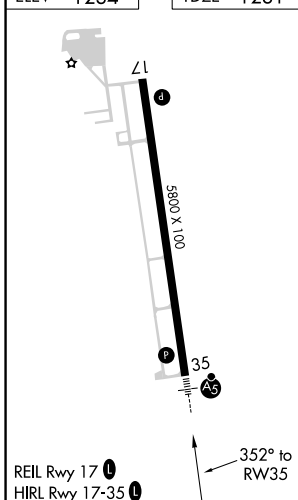
AUSTIN MUNI (AUM)

RNP APCH. ▼ For uncompensated Baro-VNAV systems, LNAV/VNAV NA below -17°C or above 54°C. For inop ALS increase LNAV/VNAV all Cats visibility to ¾ SM and LNAV Cats C/D visibility to 1 SM.	MALSR 	MISSED APPROACH: Climb to 2900 direct MAROE and hold.
---	-----------	---

AWOS-3 <b>119.025</b>	ROCHESTER APP CON * <b>119.8 251.125</b>	UNICOM <b>122.7 (CTAF)</b>
--------------------------	---	-------------------------------



ELEV 1234	TDZE 1231
-----------	-----------



CATEGORY	A	B	C	D
LPV DA		1431-½	200 (200-½)	
LNAV/VNAV DA		1483-½	252 (300-½)	
LNAV MDA	1580-½	349 (400-½)	1580-⅝	349 (400-⅝)
CIRCLING	1700-1	466 (500-1)	1800-1½	1880-2 646 (700-2)

NC-1, 20 FEB 2025 to 20 MAR 2025

NC-1, 20 FEB 2025 to 20 MAR 2025