

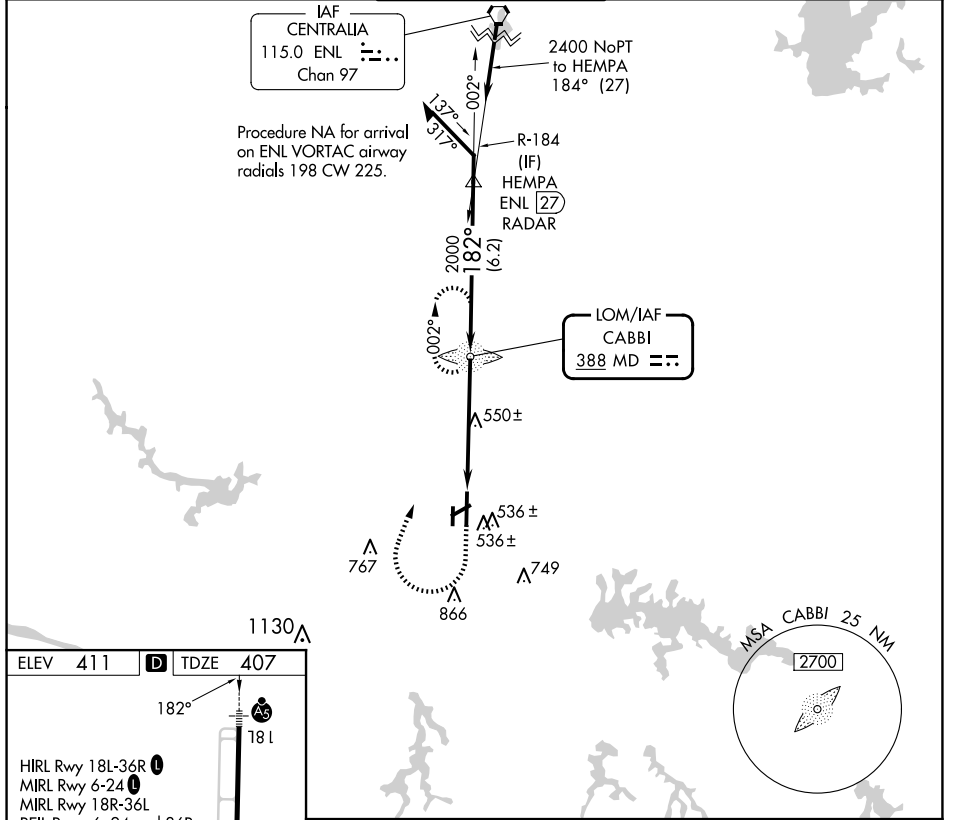
LOM MD <b>388</b>	APP CRS <b>182°</b>	Rwy ldg <b>6506</b>
		TDZE <b>407</b>
		Apt Elev <b>411</b>

# NDB RWY 18L

SOUTHERN ILLINOIS (MDH)

<p><b>⚠</b> Circling Rwy 6, 36L NA at night. For inop ALS, increase S-18L Cat A/B visibility to 1 SM.</p>	<p><b>MALSR</b>  </p>	<p><b>MISSED APPROACH:</b> Climb to 2100 then climbing right turn to 2400 direct CABBI LOM and hold.</p>
---	---------------------------	--

ATIS <b>119.725</b>	KANSAS CITY CENTER <b>127.475 346.275</b>	SOUTHERN TOWER ★ <b>125.35 (CTAF) 322.4</b>	GND CON <b>121.8</b>	UNICOM <b>122.95</b>
------------------------	--	--	-------------------------	-------------------------

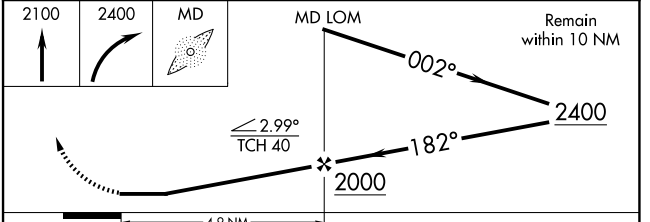


ELEV 411	<b>D</b>	TDZE 407
----------	----------	----------

HIRL Rwy 18L-36R  
MIRL Rwy 6-24  
REIL Rws 6, 24 and 36R

FAF to MAP 4.9 NM

Knots	60	90	120	150	180
Min:Sec	4:54	3:16	2:27	1:58	1:38



CATEGORY	A	B	C	D
S-18L	860- <sup>3</sup> / <sub>4</sub>	453 (500- <sup>3</sup> / <sub>4</sub> )	860- <sup>7</sup> / <sub>8</sub>	453 (500- <sup>7</sup> / <sub>8</sub> )
<b>CIRCLING</b>	900-1 489 (500-1)	920-1 509 (600-1)	1180-2 <sup>1</sup> / <sub>4</sub> 769 (800-2 <sup>1</sup> / <sub>4</sub> )	1180-2 <sup>1</sup> / <sub>2</sub> 769 (800-2 <sup>1</sup> / <sub>2</sub> )

EC-3, 20 FEB 2025 to 20 MAR 2025

EC-3, 20 FEB 2025 to 20 MAR 2025