

APP CRS	Rwy Idg	6506
182°	TDZE	407
	Apt Elev	411

RNAV (GPS) RWY 18L

SOUTHERN ILLINOIS (MDH)

RNP APCH.

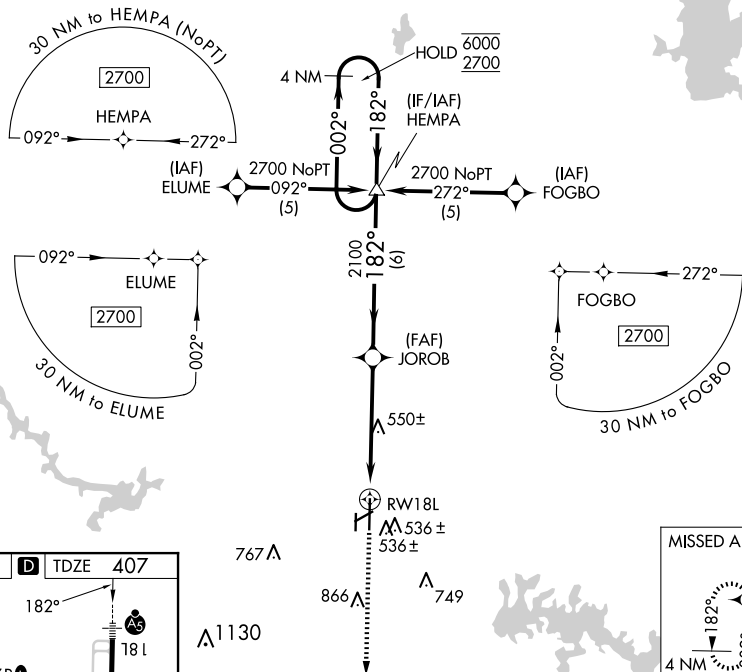
▼ Circling Rwy 6, 36L NA at night.
▲ For uncompensated Baro-VNAV systems, LNAV/VNAV NA below -15°C or above 54°C.

MALSR

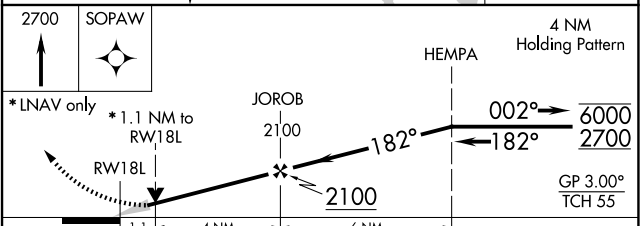
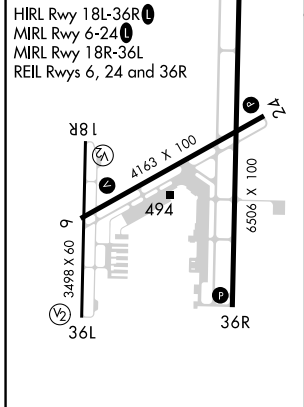


MISSED APPROACH:
 Climb to 2700 direct SOPAW and hold.

ATIS 119.725	KANSAS CITY CENTER 127.475 346.275	SOUTHERN TOWER * 125.35 (CTAF) 0 322.4	GND CON 121.8	UNICOM 122.95
------------------------	--	--	-------------------------	-------------------------



ELEV 411	D	TDZE 407
----------	----------	----------



CATEGORY	A	B	C	D
LNAV/VNAV DA	804-5/8		397 (400-5/8)	
LNAV MDA	800-1/2	393 (400-1/2)	800-5/8	393 (400-5/8)
CIRCLING	900-1 489 (500-1)	920-1 509 (600-1)	1180-2 1/4 769 (800-2 1/4)	1180-2 1/2 769 (800-2 1/2)

EC-3, 20 FEB 2025 to 20 MAR 2025

EC-3, 20 FEB 2025 to 20 MAR 2025