

| | | |
|--|------------------------|---|
| LOC/DME I-TBN 110.9 Chan 46 | APP CRS 147° | Rwy Idg 5535 TDZE 1158 Apt Elev 1160 |
|--|------------------------|---|

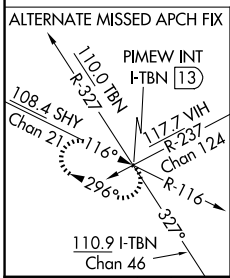
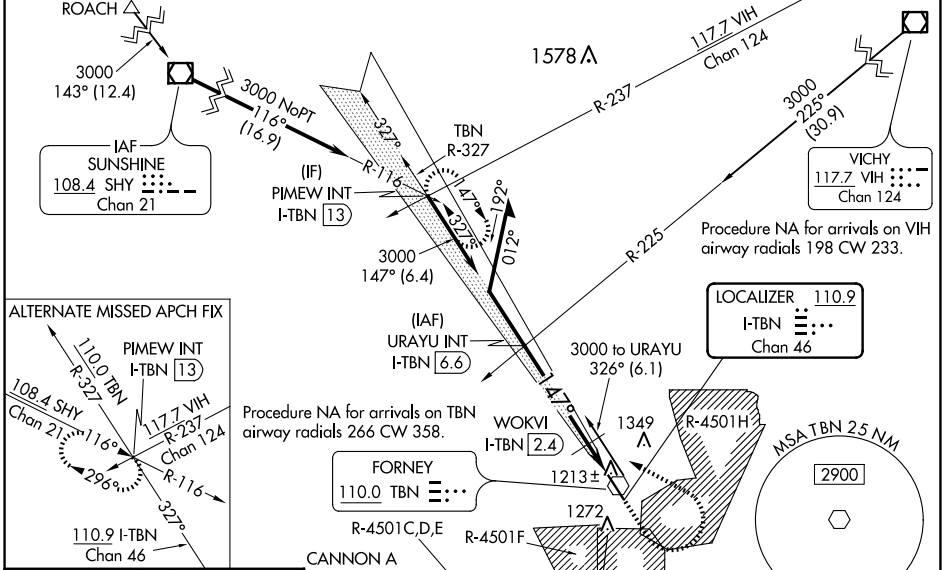
ILS or LOC RWY 15

WAYNESVILLE-ST ROBERT RGNL FORNEY FLD (TBN)

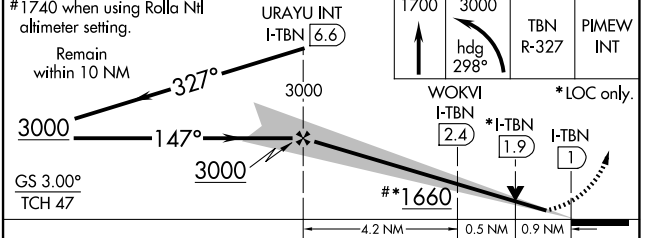
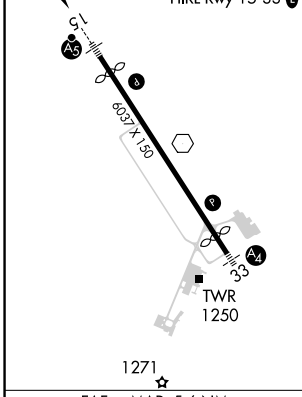
⚠ Circling NA west of Rwy 15-33. For inop ALS increase S-LOC 15 Cats C/D visibility to 1 1/2 SM. When local altimeter setting not received, use Rolla Nil altimeter setting and increase DA to 1427 feet; and all MDAs 80 feet, increase S-LOC 15 Cat C/D and Circling Cat C visibility 1/4 SM and WOKVI fix minimums S-LOC 15 Cat C/D and Circling Cat C visibility 1/4 SM. VDP NA when using Rolla Nil altimeter setting. For inop ALS when using Rolla Nil altimeter setting increase S-LOC 15 WOKVI fix minimums Cats C/D visibility to 1/4 SM. Inop table does not apply to S-ILS 15, S-LOC 15 Cat A/B, and WOKVI fix minimums S-LOC 15.

MALSR
MISSED APPROACH: Climb to 1700 then climbing left turn to 3000 on heading 298° and TBN VOR R-327 to PIMEW INT/I-TBN 13 DME and hold.

| | | | |
|------------------------------|---|---|--------------------------------|
| D-ATIS 118.7 229.4 | KANSAS CITY CENTER 128.35 284.675 | FORNEY TOWER * 125.4 (CTAF) 0 268.7 | GND CON 123.75 256.8 |
|------------------------------|---|---|--------------------------------|



| | |
|--------------------|----------------|
| ELEV 1160 | TDZE 1158 |
| REIL Rwy 15 and 33 | HIRL Rwy 15-33 |



| CATEGORY | A | B | C | D |
|--------------------|-----------------------|-----------------------|-------------------------------|-----------------------|
| S-ILS 15 | | 1358-1 | 200 (200-1) | |
| S-LOC 15 | | 1660-1 | 502 (500-1) | |
| C CIRCLING | 1660-1 | 500 (500-1) | 1660-1 1/2 500 (500-1 1/2) | 1720-2 560 (600-2) |
| WOKVI FIX MINIMUMS | | | | |
| S-LOC 15 | 1500-1 342 (400-1) | | | |
| C CIRCLING | 1580-1 420 (500-1) | 1660-1 500 (500-1) | 1660-1 1/2 500 (500-1 1/2) | 1720-2 560 (600-2) |

ILS or LOC RWY 15

NC-3, 20 FEB 2025 to 20 MAR 2025

NC-3, 20 FEB 2025 to 20 MAR 2025