

WAAS CH 99499 W33A	APP CRS 327°	Rwy Idg TDZE Apt Elev	5510 1153 1160
--	------------------------	-----------------------------	---

RNAV (GPS) RWY 33

WAYNESVILLE-ST ROBERT RGNL FORNEY FLD (T'BN)

RNP APCH - GPS.

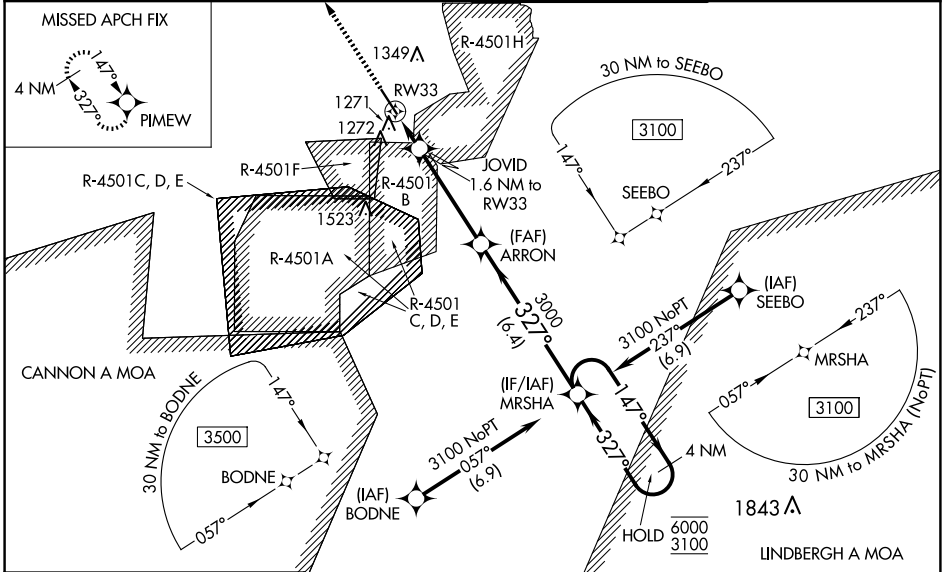
▼ For uncompensated Baro-VNAV systems, LNAV/VNAV NA below -15°C or above 54°C.
 ▲ When local altimeter setting not received, use Rolla Nil altimeter setting and increase LPV DA to 1472 feet, increase LNAV/VNAV DA to 1521 feet and all MDAs 80 feet. Increase LNAV Cat C/D visibility to RVR 6000. Inop table does not apply to LPV all Cats, LNAV/VNAV all Cats, and LNAV Cats A/B. For inop ALS increase LNAV Cats C/D visibility to RVR 6000. VDP and Baro-VNAV NA when using Rolla Nil altimeter setting. Circling NA west of Rwy 15-33. Rwy 33 helicopter visibility reduction below ¾ SM NA. Inop table does not apply to LPV all Cats, LNAV/VNAV all Cats, and LNAV Cats A/B when using Rolla Nil altimeter setting.

MALS

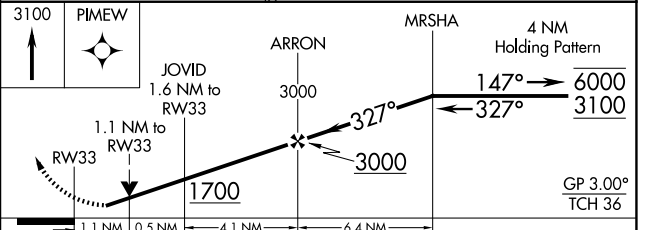
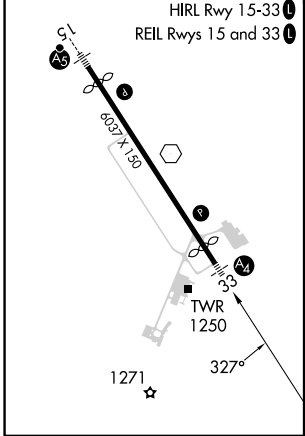
Ⓜ **A** ≡

MISSED APPROACH:
Climb to 3100 direct PIMEW and hold.

D-ATIS 118.7 229.4	KANSAS CITY CENTER 128.35 284.675	FORNEY TOWER ★ 125.4 (CTAF) 0 268.7	GND CON 123.75 256.8
------------------------------	---	---	--------------------------------



ELEV 1160	TDZE 1153
-----------	-----------



CATEGORY	A	B	C	D
LPV DA		1403/50	250 (300-1)	
LNAV/VNAV DA		1452/50	299 (300-1)	
LNAV MDA		1540/50	387 (400-1)	
<input checked="" type="checkbox"/> CIRCLING	1580-1 420 (500-1)	1660-1 500 (500-1)	1660-1½ 500 (500-1½)	1720-2 560 (600-2)

NC-3, 20 FEB 2025 to 20 MAR 2025

NC-3, 20 FEB 2025 to 20 MAR 2025