

WAAS CH 82635 W36A	APP CRS 003°	Rwy Idg 2690 TDZE 905 Apt Elev 906
--	------------------------	--

RNAV (GPS) RWY 36

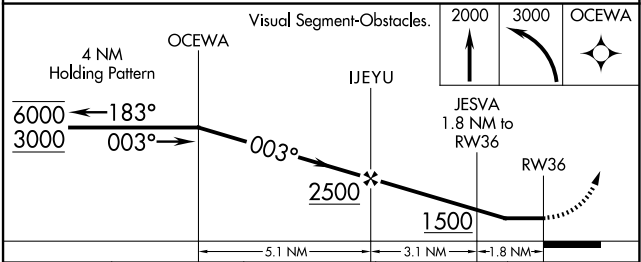
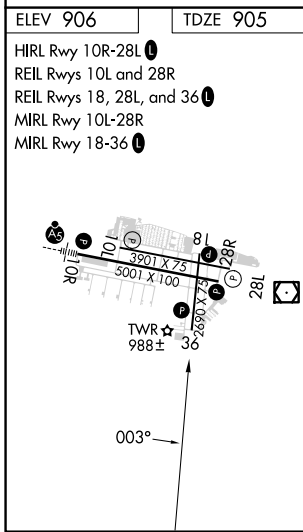
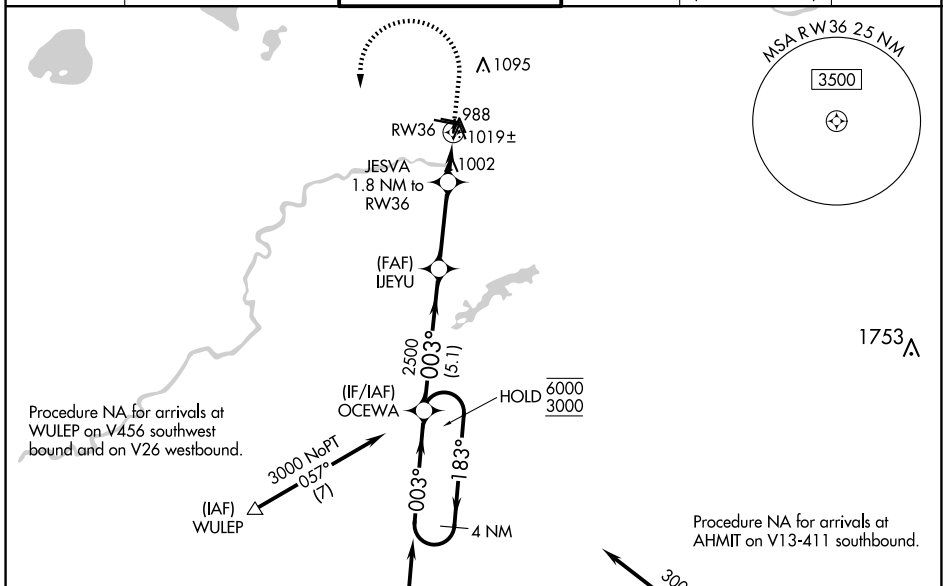
FLYING CLOUD (FCM)

RNP APCH.

⚠ Helicopter visibility reduction below 1 SM NA. When local altimeter setting not received, use Minneapolis St Paul Intl/Wold-Chamberlain altimeter setting and increase all MDA 40 feet and increase LP and LNAV Cat C visibility 1/8 mile. Straight-in Rwy 36 at night, and Circling Rwy 18, 36 at night, operational VGSI required, remain on or above VGSI glidepath until threshold.

MISSED APPROACH: Climb to 2000 then climbing left turn to 3000 direct OCEWA and hold.

ATIS 124.9	MINNEAPOLIS APP CON 134.7 284.7	FLYING CLOUD TOWER * 119.15 (CTAF) 0	GND CON 121.7	CLNC DEL 121.7 (When twr closed)	UNICOM 122.95
----------------------	---	--	-------------------------	---	-------------------------



CATEGORY	A	B	C	D
LP MDA		1260-1	355 (400-1)	NA
LNAV MDA		1280-1	375 (400-1)	NA
Ⓛ CIRCLING	1320-1 414 (500-1)	1440-1 534 (600-1)	1440-1½ 534 (600-1½)	NA

NC-1, 20 FEB 2025 to 20 MAR 2025

NC-1, 20 FEB 2025 to 20 MAR 2025