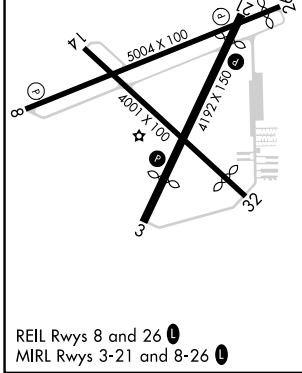
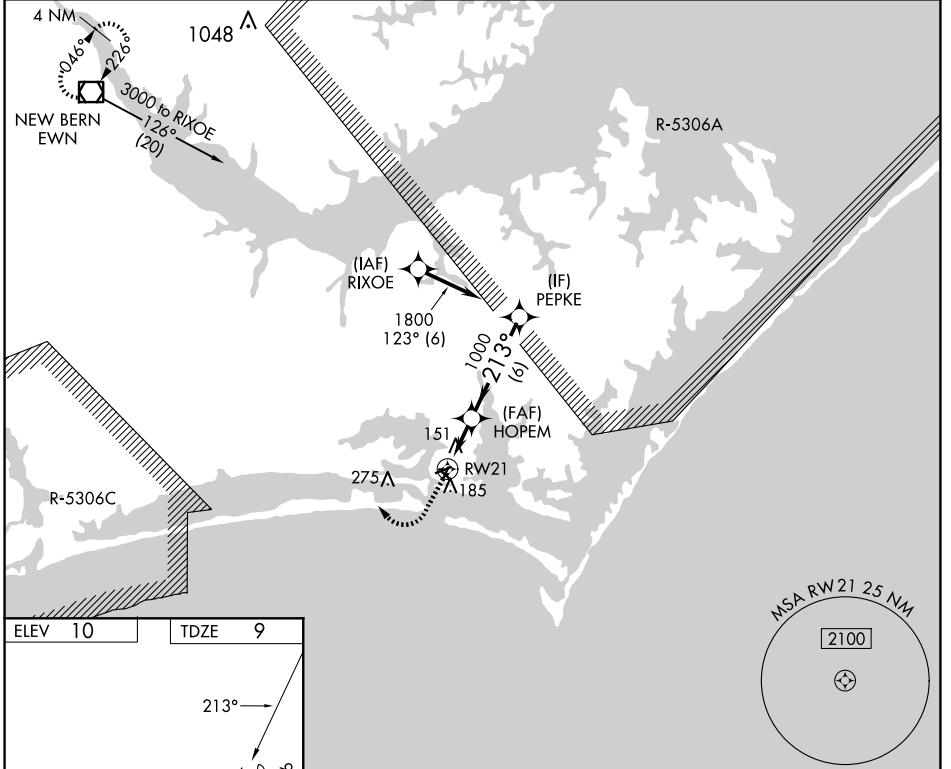


APP CRS	Rwy Idg	3676
213°	TDZE	9
	Apt Elev	10

RNAV (GPS) RWY 21

MICHAEL J SMITH FLD (MR.H)

RNP APCH - GPS.			MISSED APPROACH: Climb to 500 then climbing right turn to 3000 direct EWN VOR/DME and hold.
ASOS 135.375	CHERRY POINT APP CON 132.575 299.6	CLNC DEL 125.65	UNICOM 122.8 (CTAF) 0



ELEV 10	TDZE 9	500		3000	EWN	VGSI and descent angles not coincident (VGSI Angle 4.00/TCH 54).	
REIL Rwy 8 and 26		HOPEM		PEPKE			
MIRL Rwy 3-21 and 8-26		RWY 21		RWY 21		RWY 21	
		0.8		2.2 NM		6 NM	
CATEGORY	A	B	C	D			
LNAV MDA	420-1	411 (500-1)	NA				
CIRCLING	540-1	530 (600-1)	NA				

SE-2, 20 FEB 2025 to 20 MAR 2025

SE-2, 20 FEB 2025 to 20 MAR 2025