

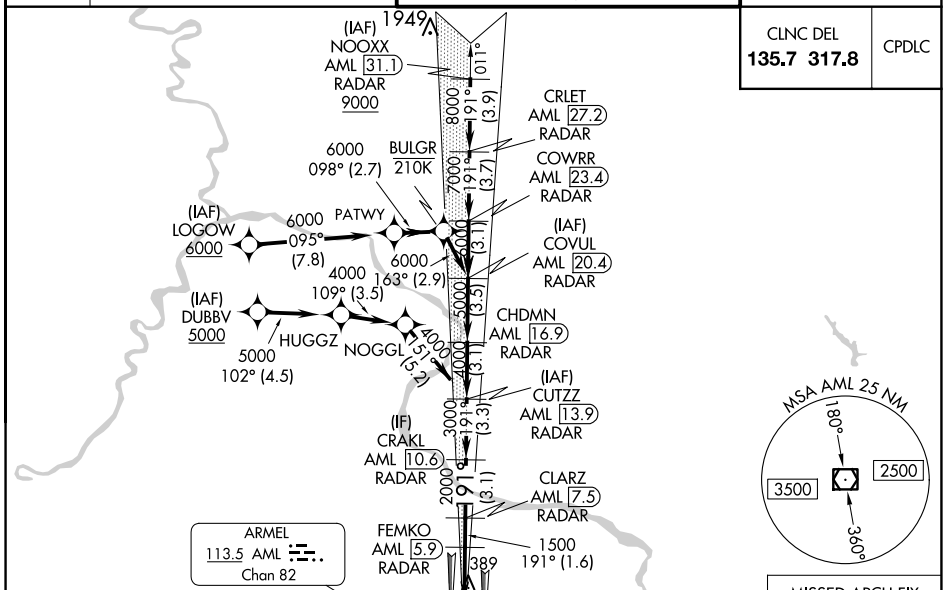
LOC I-DLX <b>111.3</b>	APP CRS <b>191°</b>	Rwy Idg <b>11089</b> TDZE <b>272</b> Apt Elev <b>312</b>
---------------------------	------------------------	--

# ILS or LOC RWY 19C

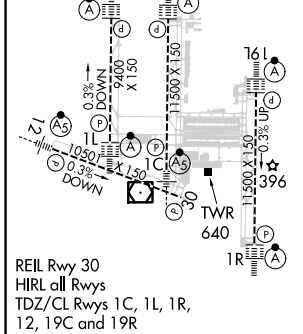
WASHINGTON DULLES INTL (IAD)

RNP APCH - GPS. RADAR required for procedure entry at NOOXX. DME or RADAR required.	ALSF-2	MISSED APPROACH: Climb to 3000 direct MOOOV and hold.
<p>Simultaneous approach authorized. DME from AML VOR/DME. DME use requires simultaneous reception of I-DLX and AML DME. For inop ALS, increase S-LOC 19C Cat C and D visibility to RVR 5500.</p>		

D-ATIS <b>134.85</b>	POTOMAC APP CON <b>120.45 306.925</b> (241°-330°) <b>128.525 306.925</b> (091°-240°) <b>126.1 338.25</b> (331°-090°)	DULLES TOWER <b>120.1 317.8</b> (Rwy 1R/19L) <b>120.25 348.6</b> (Rwy 1C/19C) <b>134.425 348.6</b> (Rwys 1L/19R and 12/30)	GND CON <b>121.9 317.8</b> (EAST) <b>121.625 348.6</b> (WEST)
-------------------------	---	---	---



ELEV 312	TDZE 272
----------	----------



3000 MOOOV	VGSi and ILS glidepath not coincident (VGSi Angle 3.00/TCH 72).			
CRLET AML 27.2	NOOXX AML 31.1	COVUL AML 20.4	COWRR AML 23.4	CHDMN AML 16.9
CUTZZ AML 13.9	CRAKL AML 10.6	CLARZ AML 7.5	FEMKO AML 5.9	IM 447±
9000	8000	7000	6000	5000
4000	3000	2000	1500	1500
0.2 NM	0.7 NM	2.8 NM	1.6 NM	3.1 NM
3.3 NM	3.1 NM	3.5 NM	3.1 NM	3.7 NM
3.9 NM				
CATEGORY	A	B	C	D
S-ILS 19C	472/18 200 (200-½)			
S-LOC 19C	640/24	368 (400-½)	640/35	368 (400-½)
CIRCLING	940-1	628 (700-1)	940-1¾	1180-2¾
			628 (700-1¾)	868 (900-2¾)

FAF to MAP 3.7 NM					
Knots	60	90	120	150	180
Min:Sec	3:42	2:28	1:51	1:29	1:14

NE-3, 20 FEB 2025 to 20 MAR 2025

NE-3, 20 FEB 2025 to 20 MAR 2025