

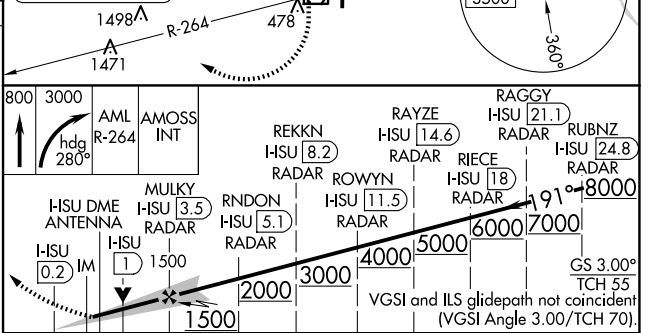
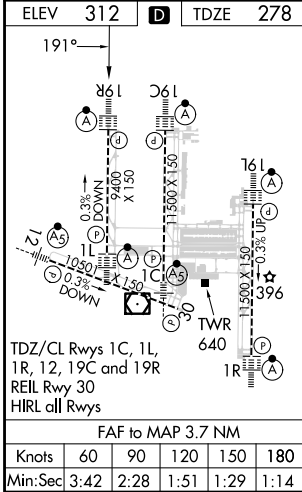
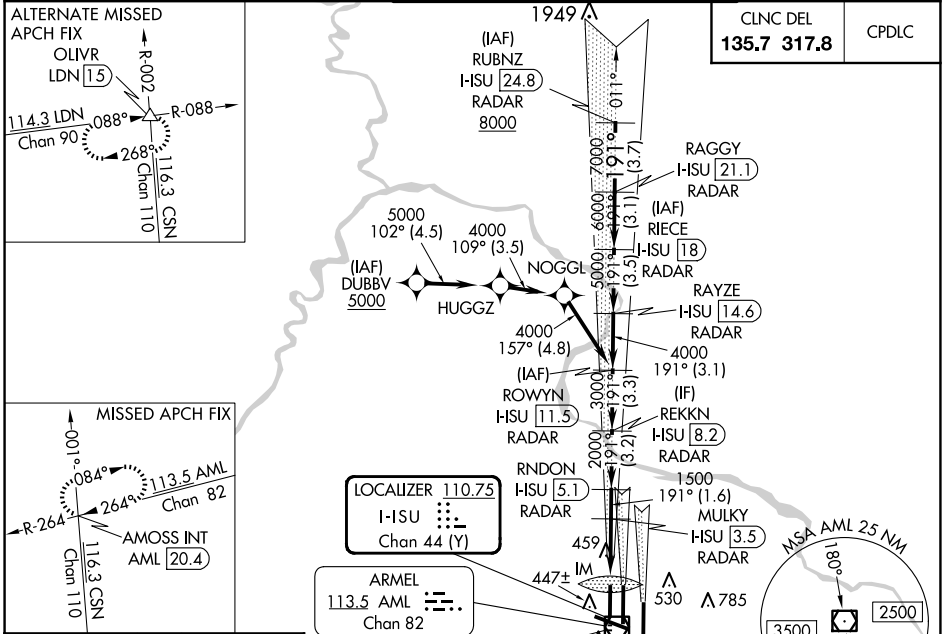
LOC/DME I-HSU 110.75 Chan 44 (Y)	APP CRS 191°	Rwy ldg 9400
		TDZE 278
		Apt Elev 312

ILS or LOC RWY 19R

WASHINGTON DULLES INTL (IAD)

RNP APCH-GPS. From DUBBV.
 DME or RADAR required. RADAR required for procedure entry at RUBNZ.
 ALSF-2
 MISSED APPROACH: Climb to 800 then climbing right turn to 3000 on heading 280° and AML VOR/DME R-264 to AMOSS INT/AML 20.4 DME and hold.
 Simultaneous approach authorized.

D-ATIS 134.85	POTOMAC APP CON 120.45 306.925 (241°-330°) 128.525 306.925 (091°-240°) 126.1 338.25 (331°-090°)	DULLES TOWER 120.1 317.8 (Rwys 1R/19L) 120.25 348.6 (Rwys 1C/19C) 134.425 348.6 (Rwys 1L/19R and 12/30)	GND CON 121.9 317.8 (EAST) 121.625 348.6 (WEST)
-------------------------	---	---	---



CATEGORY	A	B	C	D
S-ILS 19R	478/18 200 (200-½)			
S-LOC 19R	720/24 442 (500-½)	720/45 442 (500-¾)		
CIRCLING	940-1 628 (700-1)	940-1¾ 628 (700-1¾)	1180-2¾ 868 (900-2¾)	

NE-3, 20 FEB 2025 to 20 MAR 2025

NE-3, 20 FEB 2025 to 20 MAR 2025